

# Your area Our impact

THE UNIVERSITY OF  
WARWICK

The University of Warwick's contribution to Coventry



Coventry

£222m a year

That's £4.3m a week or £610,000 a day



£132.3m

Economic benefit from  
Warwick student expenditure



£54m

Economic benefit from staff  
living in the city



£36.2m

Purchasing goods and services  
from 504 Coventry businesses

The value of the University of Warwick's economic impact on Coventry

Economic  
impact



Innovation



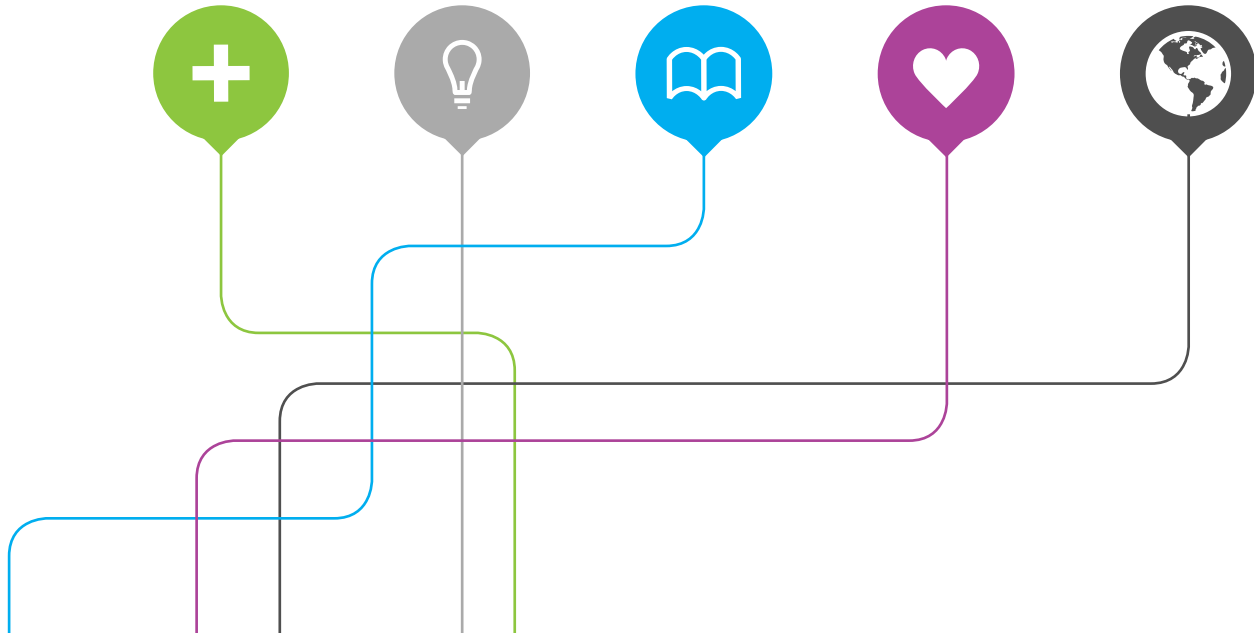
Education  
& training



Culture  
& community



Global  
connections



# Focus on Coventry



## Economic impact

 £10,039

The value of each University of Warwick student's expenditure to Coventry's economy

## Innovation



140

Science Park home to 140 tenant companies

## Education & training



£1.9m

£1.9m in CPD delivered by the University to regional organisations

## Culture & community



30%

30% of 270,000 annual visitors to Warwick Arts Centre came from Coventry

## Global connections



40%

40% of all Warwick Volunteers are international students





# Economic impact

Driving economic growth in Coventry

In 2011/2012...

The total value of the University of Warwick's economic impact on the city of Coventry was £222m.

This economic impact was mostly created by the **13,179 University of Warwick students living in the city and on Warwick's campus**, whose expenditure was worth £132.3m to the Coventry economy.

Therefore, the average annual economic impact of **each Warwick student to Coventry's economy was £10,039**. This figure is based on methodology developed by the Department for Business, Innovation and Skills and is reduced to take into account student term-times, living in the family home and circular spending.

2,607 members of the University of Warwick and Students' Union staff live in Coventry, creating **£54m** of economic benefit. The University and Students' Union generated £36.2m of economic impact by purchasing goods and services from 504 Coventry businesses.

This economic impact was worth **4,739 extra jobs** to Coventry.



£222m

University economic impact on Coventry.



4,739

Extra jobs in Coventry.



2,607

Members of the University and Students' Union's staff live in Coventry, creating £54m of economic benefit.



# Innovation

University of Warwick Science Park

Now owned outright by the University, the Science Park provides a full range of business support services to businesses in Coventry and elsewhere in the West Midlands. These services have benefitted over 1800 companies in the last 8 years, attracted 24 businesses to the region, created 66 companies and safeguarded 291 jobs. The Science Park is currently home to 140 tenants on four sites.

Helping regional manufacturing thrive

WMG (formerly Warwick Manufacturing Group) has developed a close relationship with Jaguar Land Rover, a major employer in the region. JLR has located **180 of its R&D staff on campus** as part of a programme which will generate **£100m of collaborative research** over 10 years.

WMG have also led the Premium Automotive Research and Development Programme (PARD) designed to assist the automotive supply base in the region. An independent evaluation concluded that it has **assisted 605 businesses, generated £55.5m in value added and safeguarded 5,496 jobs**.

Supporting SMEs in Coventry and Warwickshire

The International Institute for Product and Service Innovation (IIPSI) is a dedicated facility to help West Midlands SMEs access world-leading technology to develop leading, innovative products and services. It is funded by the European Regional Development Fund and the University of Warwick.

IIPSI is expected to create or safeguard over 200 jobs and catalyse start-ups through a funded support programme for West Midlands SMEs that will run until the end of June 2015.



75

New jobs created across the region in 2012/2013 by the WMG SME team.



£2.9m

Funding won by Warwick Business School in 2012 to launch a new Enterprise Research Centre to boost SME performance.



5,496

Jobs safeguarded through the WMG's Premium Automotive Research and Development Programme.





# Education & training

Providing high quality education and skills to support Coventry's economy

In 2012/13 the University of Warwick was ranked as the **best University in the Midlands** by all four major UK university league tables. It was placed 5th by the Guardian, 6th by the Complete University Guide, 10th by the Sunday Times, and 8th by the Times Good University Guide.

Warwick graduates account for 3% of the West Midlands population with NVQ Level 4 qualifications and above, a significant proportion of the region's highly skilled labour force. There are currently 6,426 Warwick graduates registered as living in Coventry, with hundreds more living in the region but working in the city.



6,426

Graduates registered as living in Coventry.



13,179

Students living in Coventry and on campus.



520

Warwick Medical School students worked in the region's hospitals and GP's surgeries in 2011/12.



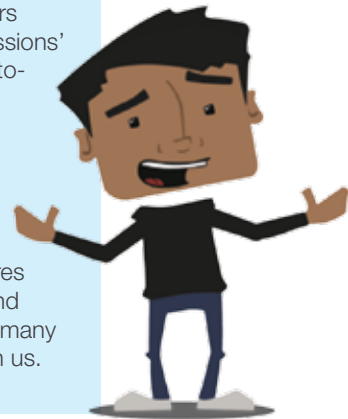
WMG

Academy for Young

## engineers

In 2014, the University of Warwick will open the WMG Academy for Young Engineers, which will be a brand new school and part of a family of University Technical Colleges – schools for 14–18 year olds which are led by businesses and a university. The WMG Academy will take all that is good from mainstream education and add in a host of skills which will prepare young people from the local area for employment or higher education. A key feature of the curriculum will be a close

working relationship with local and national employers. They will be setting the Academy's learners technical projects or 'commissions' which are based on the day-to-day problems and situations they have to resolve in their companies. The University is already working with Jaguar Land Rover, National Grid, SCC, Prodrive, Ricardo, Automotive Insulations, Squires Gears, Dassault Systemes and Tata Motors, and hopes that many more businesses will also join us.



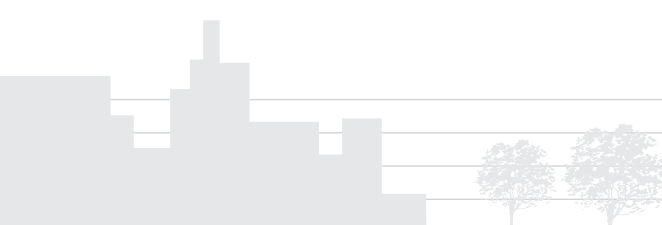
## University innovation brings benefits to Coventry's health community

In 2012, the University of Warwick, GE Healthcare, University Hospitals Coventry and Warwickshire NHS Trust (UHCW) and Coventry City Council joined forces to create the Warwick Healthcare Partnership. The Partnership will seek solutions to the chronic diseases responsible for millions of deaths worldwide each year. The new consortium brings together expertise from academia, industry, medicine and the local community, to address the key health problems that affect resource-poor communities both locally and overseas.

In 2009 the Clinical Trials Unit building was completed at Gibbet Hill at a cost of £4m. The Unit has now carried out over 30 separate trials across its four major work streams of musculoskeletal conditions including injury prevention and management, cancer, clinical trials methodology and systematic reviews. This resource is also credited with raising the quality of clinical practice in the local area.



In 2009 the Clinical Trials Unit building was completed at Gibbet Hill at a cost of £4m





# Global connections



National Automotive Innovation Campus, a £100m investment due to be built on the University's Campus

As part of the University's internationally-renowned approach to working with business, WMG has developed a close relationship with Jaguar Land Rover, a major employer in the region. JLR has located 180 of its R&D staff on campus as part of a programme which will generate £100m of collaborative research over 10 years. JLR and Tata are also funding, with the UK government, the development of the National Automotive Innovation Campus at Warwick; a £100m investment in a state-of-the-art new building on the University's campus announced at the end of 2012.

Our international students make up 40% of all Warwick Volunteers, and organise events like One World Week, which, with over 200 student volunteers, is arguably the world's largest student-run international event.



## 45,000

international alumni of Warwick resident in 193 countries.



## 83%

of Warwick's international students would recommend the University – higher than the national average.



## 8,350

Warwick is one of the UK's most culturally diverse universities, with 8,350 international students from 72 different countries on campus in 2011/12.



# Culture & community

## Students as a part of the Coventry community



### Student enterprise helping Coventry kids



Viva La Yog! is a social enterprise set up by three final year students, supported by Warwick Students' Union and Ernst & Young. They aim to tackle socio-economic disadvantage in the Coventry area by financing nutritional classes for school children through the

sale of their organic, home-made frozen yoghurt. Working with local schools, Viva La Yog! will engage Coventry children living in poverty through fun tasting and activity sessions, whilst educating them about the importance of a healthy, balanced diet.



Warwick Volunteers in Coventry schools

## Warwick Volunteers

Warwick Volunteers is one of the UK's largest and most popular student volunteering schemes. It attracts 2500 registrants each year and its mentoring scheme alone has been estimated to have a social-economic worth of £1m to the local community.



## 2,500

Registrants for Warwick Volunteers every year.



## £27.7m

Total value to the local economy of Warwick Arts Centre.



## 62%

Of visitors to Warwick Arts Centre come from Coventry & Warwickshire.



## 700

Trees planted by Warwick Volunteers teaming up with Canley residents to brighten up Canley Brook.

# The University of Warwick's impact in the region

## Culture & community



With 270,000 visitors in 2011/2012, the value of Warwick Arts Centre to the local community has been estimated at £27.7m.

## Education & training



**23,226**

Warwick graduates live and work in the region.

## Economic impact



We support  
**15,500 jobs**  
in the West Midlands.

## Economic impact



We had an economic impact of **£520m** in 2011/2012 - that's worth **£10m a week** to the region.



## Innovation



JLR, Tata and the UK Government are funding the development of the National Automotive Innovation Campus at Warwick - a £100m state-of-the-art new building.

## Global connections



Warwick is the only European University involved in the new Centre for Urban Science and Progress (CUSP) in New York. Connecting our global reputation to your local area.

## Find out more

For more information on the University of Warwick and the report by independent consultants SQW, please visit:

[www.warwick.ac.uk/yourarea](http://www.warwick.ac.uk/yourarea)

University of Warwick  
Coventry, CV4 8UW  
Tel +44 (0)24 7615 1041



Scan me to find out more