

DATA ANALYSIS FOR:

ZHUHAI MULTIPLE HOUSING SURVEYS, CHINA

Household Surveys of three zones (urban, peri-urban and rural) – 2013-14

Document drafted Dec 2014

Ali Cheshmehzangi, The University of Nottingham Ningbo China

As part of ELITH Project – Energy and Low-Income Tropical Housing



UNITED KINGDOM • CHINA • MALAYSIA

NOTE: To use any of the collated data here, please contact the researchers who were involved in this data collection. Permission is required for any sort of use of this data.

China contact: Ali.Cheshmehzangi@nottingham.edu.cn

Energy and Housing Conditions in China: The Survey Study of Zhuhai, South China

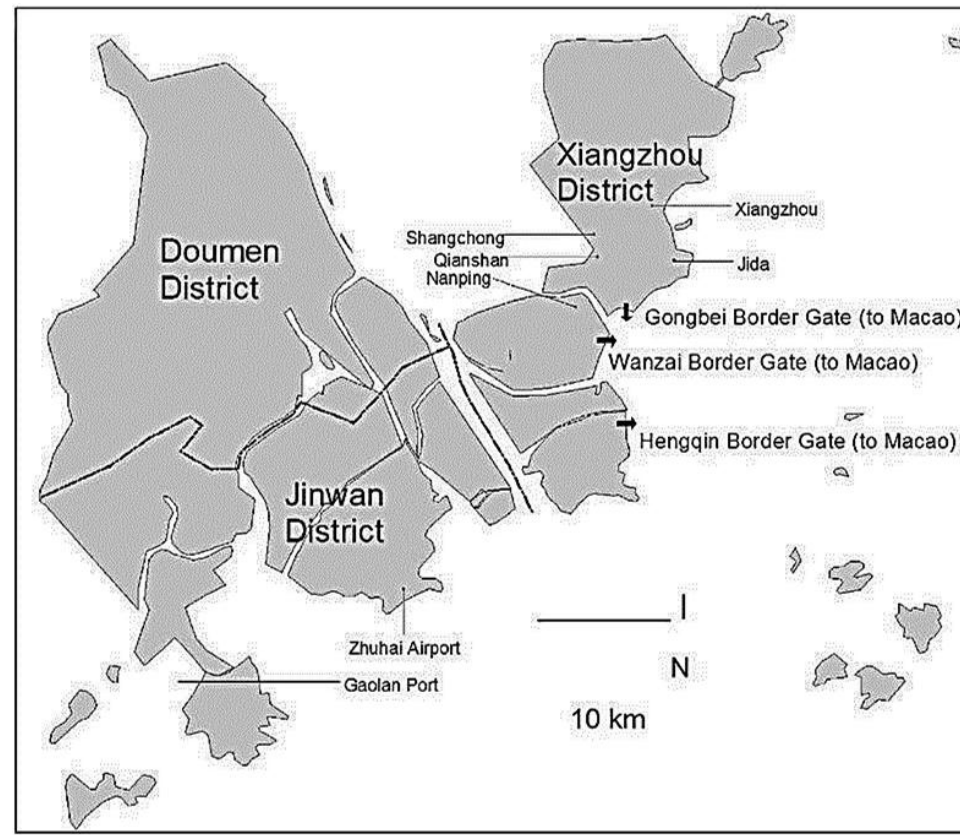


Figure 1 – Zhuhai's main districts (Source: Sheng and Tang, 2013, p. 71)

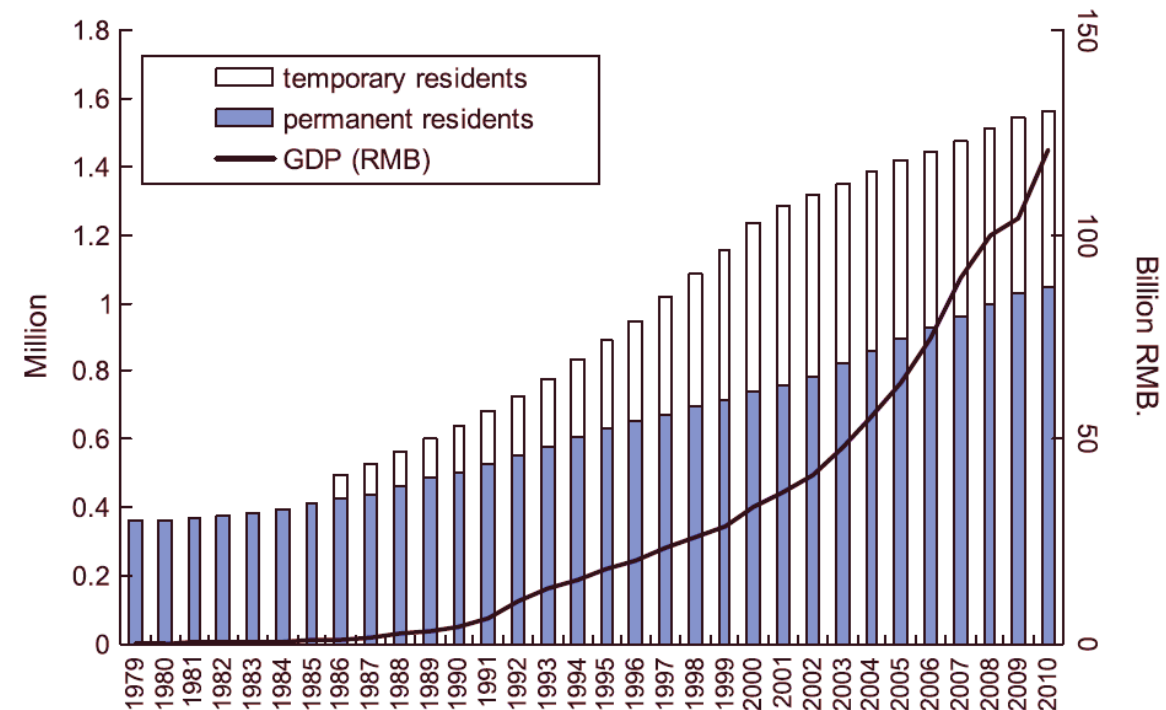


Figure 2 - Demographics and GDP growth (in Billion RMB) in the City of Zhuhai from 1979 to 2010 (Source: data from Zhuhai Statistics Bureau (2011); cited by Sheng and Tang, 2013).

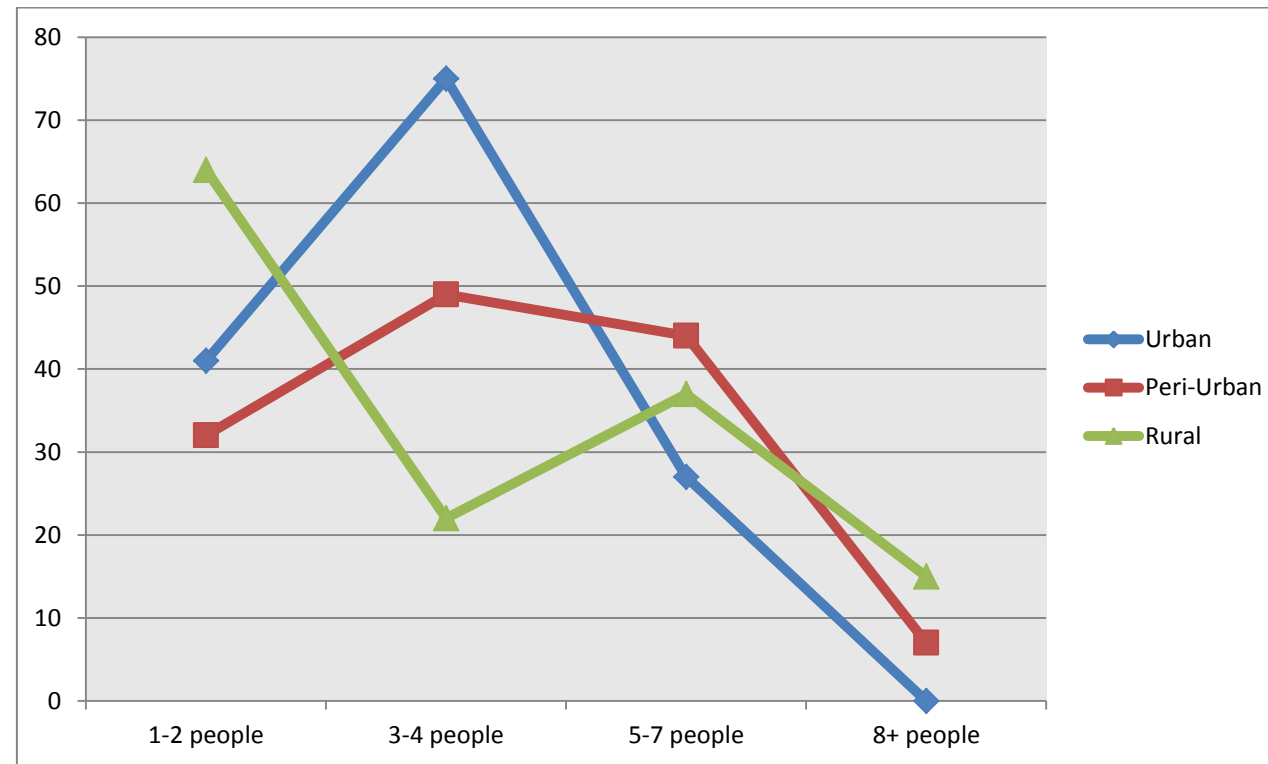


Figure 3 – Demographics and household occupancy in the studied areas of Zhuhai’s urban, peri-urban and rural (Source: author’s own data from survey study).

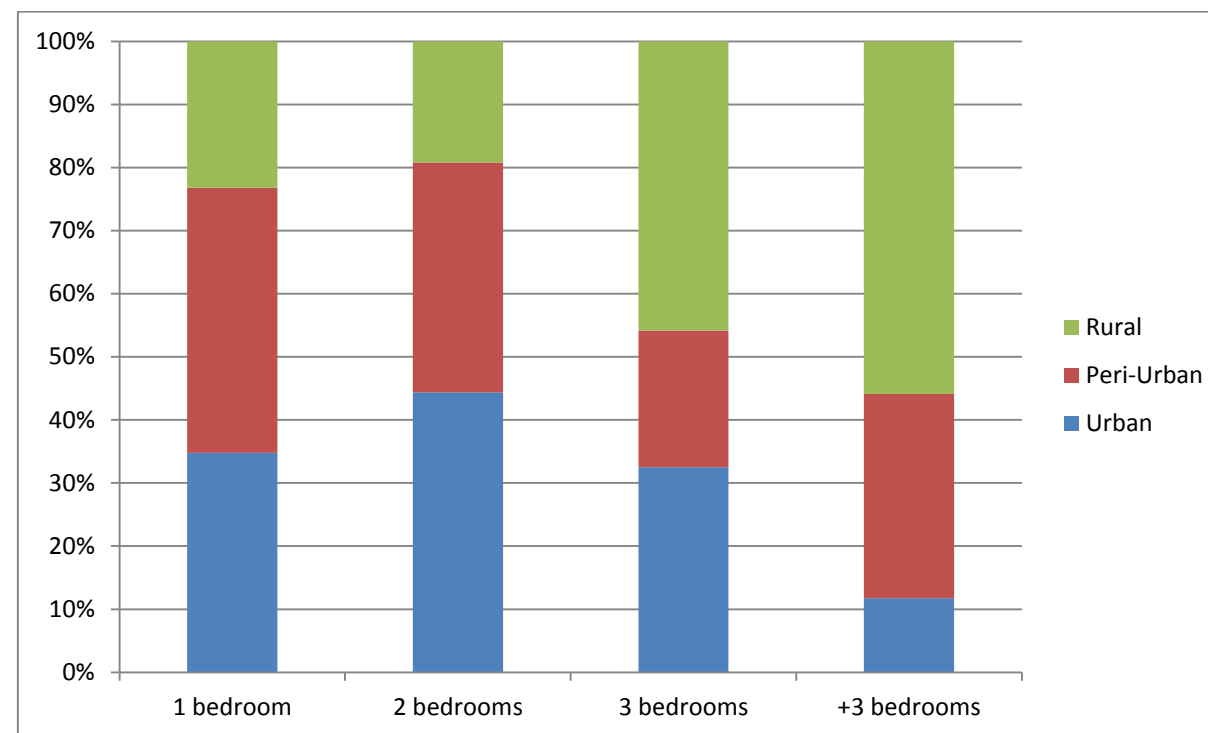


Figure 4 – Number of bedrooms for residential units in the studied areas of Zhuhai’s urban, peri-urban and rural (Source: author’s own data from survey study).

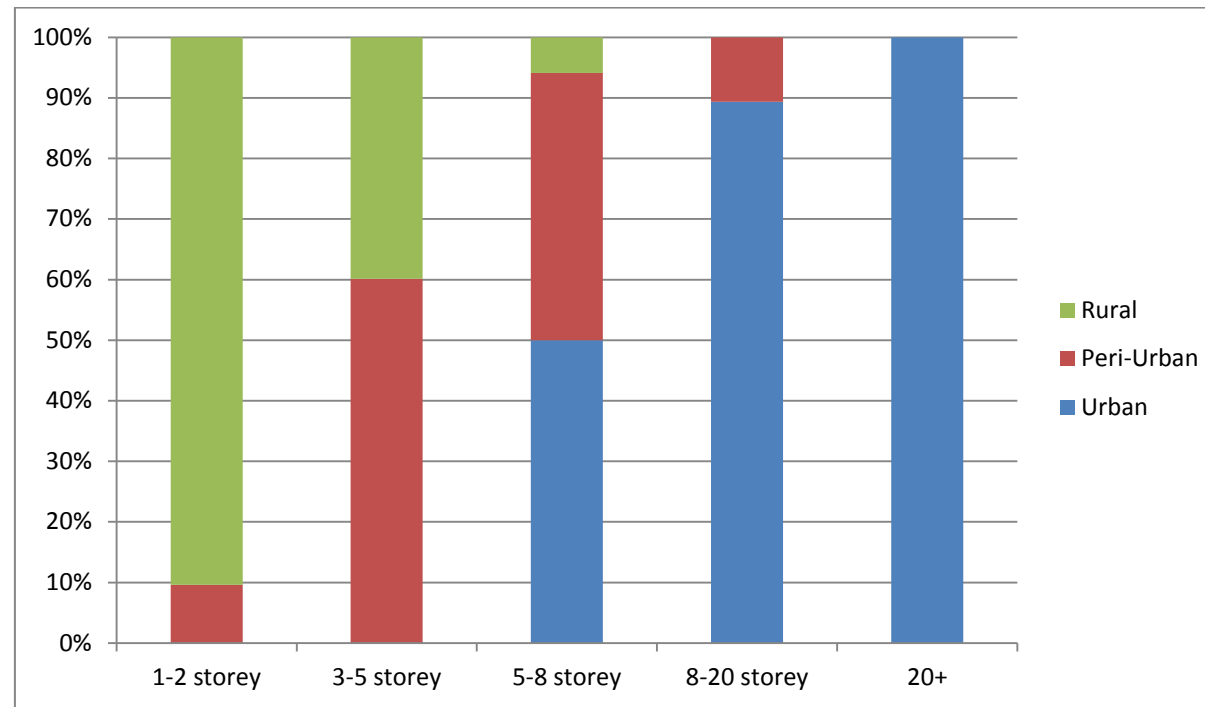


Figure 5 – Number of stories for surveyed residential units in the studied areas of Zhuhai’s urban, peri-urban and rural (Source: author’s own data from survey study).

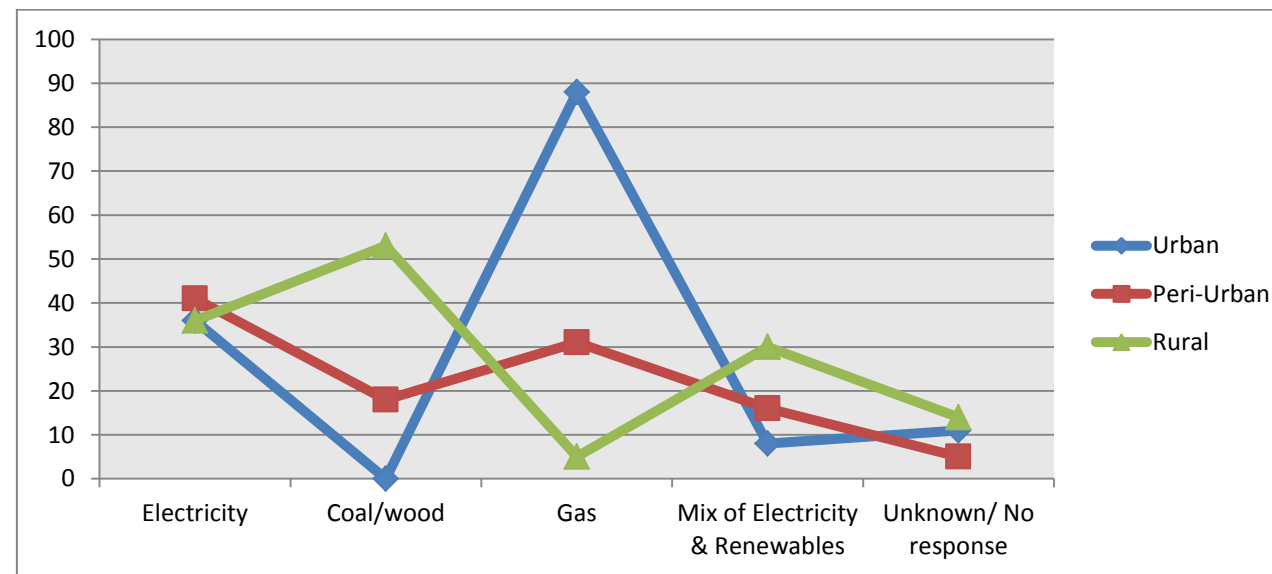


Figure 6 - Primary Source of Household Energy Consumption (including, lighting, cooking heating, cooling and other electrical uses) during winter

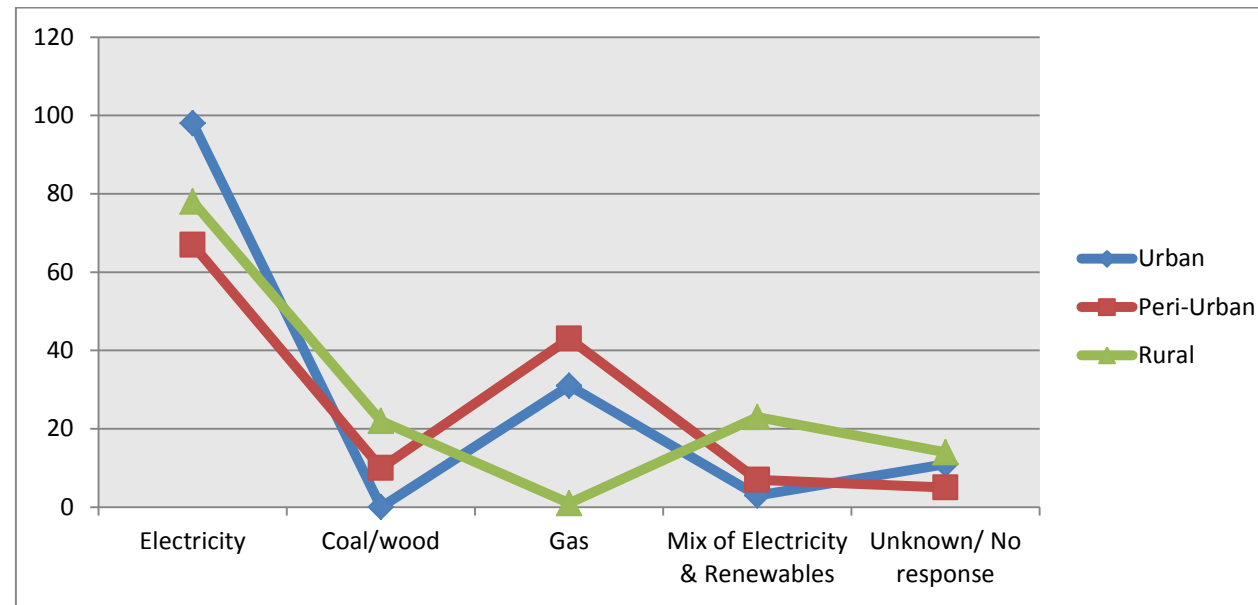


Figure 7 - Primary Source of Household Energy Consumption (including, lighting, cooking, heating, cooling and other and electrical uses) during summer