


RESEARCH

Open Access



Management of primary blast lung injury: a comparison of airway pressure release versus low tidal volume ventilation

Timothy E. Scott¹, Anup Das^{2*} , Mainul Haque³, Declan G. Bates² and Jonathan G. Hardman^{4,5}

* Correspondence: anup.das@warwick.ac.uk

²School of Engineering, University of Warwick, Coventry CV4 7AL, UK
Full list of author information is available at the end of the article

Abstract

Background: Primary blast lung injury (PBLI) presents as a syndrome of respiratory distress and haemoptysis resulting from explosive shock wave exposure and is a frequent cause of mortality and morbidity in both military conflicts and terrorist attacks. The optimal mode of mechanical ventilation for managing PBLI is not currently known, and clinical trials in humans are impossible due to the sporadic and violent nature of the disease.

Methods: A high-fidelity multi-organ computational simulator of PBLI pathophysiology was configured to replicate data from 14 PBLI casualties from the conflict in Afghanistan. Adaptive and responsive ventilatory protocols implementing low tidal volume (LTV) ventilation and airway pressure release ventilation (APRV) were applied to each simulated patient for 24 h, allowing direct quantitative comparison of their effects on gas exchange, ventilatory parameters, haemodynamics, extravascular lung water and indices of ventilator-induced lung injury.

Results: The simulated patients responded well to both ventilation strategies. Post 24-h investigation period, the APRV arm had similar PF ratios (137 mmHg vs 157 mmHg), lower sub-injury threshold levels of mechanical power (11.9 J/min vs 20.7 J/min) and lower levels of extravascular lung water (501 ml vs 600 ml) compared to conventional LTV. Driving pressure was higher in the APRV group (11.9 cmH₂O vs 8.6 cmH₂O), but still significantly less than levels associated with increased mortality.

Conclusions: Appropriate use of APRV may offer casualties with PBLI important mortality-related benefits and should be considered for management of this challenging patient group.

Keywords: Primary blast lung injury, Acute respiratory distress syndrome, Low tidal volume ventilation, Airway pressure release ventilation, Ventilator-induced lung injury, Computational modelling

Background

Primary blast lung injury (PBLI) results from explosive shock wave exposure and is a frequent cause of mortality and morbidity in both military conflicts and acts of terrorism [1]. It is particularly associated with explosions in confined spaces, such as terrorist attacks on public transportation systems [2]. Defined as “acute lung injury within 12 h

of blast exposure which is not due to penetrating or blunt injury” [3], it presents as a syndrome of respiratory distress and haemoptysis and is frequently complicated by pneumothoraces. Severe cases progress as acute respiratory distress syndrome (ARDS). The majority of casualties with the condition will require ventilatory support in an intensive care unit (ICU) [4] and so it can generate unpredictable and significant demands on medical resources. As PBLI is by nature a sporadic disease born out of conflict, randomized controlled clinical trials to investigate alternative management strategies are not feasible—clinical care has been, and will continue to be, guided by surrogate models of the disease. Such models have traditionally been *in vivo* animal models [5–7], but there has recently been increasing interest in the use of *in silico* models of human PBLI pathophysiology [8–10].

Currently, the globally recognised best practice for mechanical ventilation in casualties with acute lung injury (including PBLI) is the approach advocated by the ARDS network (ARDSnet) group [11]. The ARDSnet “protective ventilation” approach utilises low tidal volumes (LTV) and relatively high positive end-expiratory pressure (PEEP) to minimise mechanical volutrauma and limit atelectasis. It advocates using the lowest acceptable inspired concentration of oxygen to prevent oxygen toxicity and tolerates hypercapnia within the limits of cardiovascular stability (assuming the patient has not suffered a head injury).

Airway pressure release ventilation (APRV) is an alternative mode of ventilation which is also currently in use for the management of hypoxic respiratory failure including ARDS in mechanically ventilated patients [12]. APRV is widely available on existing mechanical ventilators and may be adopted as a second-line therapy if ventilatory parameters continue to deteriorate despite LTV. It consists of the application of continuous positive airway pressure with scheduled, short, intermittent pressure releases that facilitate ventilation of carbon dioxide but are too brief to allow alveolar collapse and thus atelectasis [13–15].

Recent work utilising a porcine model of sepsis-induced ARDS compared LTV ventilation with APRV [16, 17]. The results of this study suggested that APRV was potentially superior to LTV in a number of significant ways. In particular, APRV prevented clinical and histological lung injury by preserving alveolar epithelial integrity, reducing lung oedema, preserving pulmonary surfactant and maintaining alveolar stability. In a recent clinical trial involving 138 human subjects, early application of APRV in patients with ARDS improved oxygenation and respiratory system compliance, decreased plateau airway pressures and reduced the duration of both mechanical ventilation and ICU stay, compared with LTV [18]. However, significant uncertainty still exists regarding the precise mode of action of APRV, optimal ventilator settings for its implementation, and its effect on key VILI indicators such as driving pressure [19].

The optimal mode of mechanical ventilation in PBLI is not currently known as this is the first work of this type. However, if we extrapolate findings from the ARDSnet trial (which was open to all causes of severe acute lung injury), we can postulate that reducing inspiratory plateau pressures, inspired concentration of oxygen, extravascular lung water (EVLW) and ventilator-induced lung injury (VILI) may result in improved patient outcomes. In this study, we employ a high-fidelity computational simulator, trained to replicate data from 14 real human PBLI casualties, to compare the efficacy of APRV and LTV ventilation over the first 24 h following injury.

Methods

Our PBLI simulator is a high-fidelity iterative computational model of human cardiopulmonary pathophysiology [10]. It can accommodate both mechanical and spontaneous ventilation, evolving acute lung injury including non-cardiogenic pulmonary oedema as well as ventilator-induced lung injury (VILI). The simulator can be calibrated to match individual patient data using a high-performance computing cluster (eight servers, each with 2 x ten-core Intel Xeon processors with 128 GB RAM) based at the University of Warwick. The model had previously been shown to accurately predict the cardiorespiratory effects of moderate to severe primary blast lung injury in a large animal model [20–22]. It has been validated against human cardiopulmonary physiology [23] and is used in a broad range of clinical research [24–27]. In the absence of medical intervention, application of PBLI in the simulator produces the same natural history detailed in the animal modelling referenced above. A detailed description of the mathematical principles and equations underlying the simulator is available in the online data supplement.

For this study, we generated a bank of 14 *in silico* human casualties to act as virtual study subjects. A detailed clinical database describing 14 military casualties with PBLI was used to re-create each replica casualty [28]. Clinical data consisted of arterial blood gas and ventilator settings recorded at irregular time points throughout the patients' intensive care unit admission. From this clinical data, single time points were selected for each patient based on the following criteria: (1) the time point was recorded at the earliest possible moment after hospital admission, and (2) the dataset across the arterial blood gas values and ventilator settings was most complete. The PBLI computational model was then calibrated using advanced global optimisation algorithms to accurately replicate the pathophysiological conditions of each individual patient at these time points. This calibration process involves finding a distinct combination of model parameters that reproduce the clinical data most accurately. The model parameters include airway resistances, alveolar compliances, vascular resistances, and permeabilities of the alveolar membranes.

According to the Berlin definition [29], seven of our casualties had severe ARDS and seven had moderate ARDS. The 14 *in silico* subjects are assumed to have no other injury, be euvolaemic and weigh 70 kg. We also assume that any pneumothoraces have been adequately drained. Table 1 gives the baseline settings of the patients.

One hour following injury (replicating the time required to reach a hospital and undergo initial casualty management), each subject was modelled for 24 h in each of the two ventilatory modes studied. Flexible, responsive and clinically realistic ventilation strategies were implemented for each mode, as described in Table 2. Ventilator settings were adjusted on an hourly basis following interrogation of current *in silico* arterial blood gas values with the aim of achieving an arterial partial pressure of oxygen of 9.0 kPa (67.5 mmHg). The simulator applied constant pressure generated mechanical ventilation when applying APRV and constant flow generated mechanical ventilation when applying ARDSnet ventilation. The simulations are performed with a time step of 10 ms. Measurements of key pulmonary, ventilatory and cardiovascular physiological parameters were made at one hourly intervals. Additionally, driving pressure (ΔP) and mechanical power (MP) were also calculated at one hourly intervals. These novel indices are independent, dynamic

Table 1 Baseline characteristics of patients

| Parameters | Mean | Std |
|------------------------------------|-------|-----|
| FiO ₂ | 0.67 | 0.2 |
| Tidal volume, ml | 580 | 94 |
| PEEP, cmH ₂ O | 6 | 1.8 |
| Vent rate, bpm | 16 | 3.0 |
| Duty cycle | 0.44 | 0.1 |
| PaO ₂ , kPa | 13.49 | 7.4 |
| PaCO ₂ , kPa | 5.83 | 1.0 |
| PF ratio, mmHg | 171 | 113 |
| SpO ₂ , % | 92 | 7.6 |
| pH | 7.35 | 0.1 |
| Base excess, mmol/l | -2.05 | 3.5 |
| Haemoglobin, g/dl | 11.5 | 2.4 |
| Mean art. pressure, mmHg | 95 | 14 |
| Heart rate, bpm | 93 | 9 |
| Mean pulmonary art. pressure, mmHg | 20 | 4 |
| Cardiac output, l/min | 5.4 | 0.7 |
| EVLW, ml | 708 | 155 |

and patient-centric targets for reducing VILI (and potentially mortality) in ARDS [30–32]. Driving pressure (ΔP) is defined as the difference between plateau pressure (P_{plat}) and the total positive end expiratory pressure ($PEEP_t$):

$$\Delta P = P_{plat} - PEEP_t \tag{1}$$

Table 2 Ventilatory protocol applied by the simulator over the 24-h duration of the study

| Ventilatory parameters | ARDSnet (LTV) | APRV |
|-------------------------------------|--|--|
| Initial settings | Tidal volume of 6 ml/kg Respiratory rate 16 bpm PEEP 10 cm H ₂ O Plateau pressure limited to 30 cmH ₂ O FiO ₂ 50% I:E ratio 1:1 | P _{High} –25 cmH ₂ O (20–30 cmH ₂ O) P _{Low} –0 cmH ₂ O T _{High} –5 s (4–6) T _{Low} –0.5 s (0.35–0.6)* P _{High} limited to 30 cmH ₂ O FiO ₂ 50% |
| One hourly adjustments | If PaO ₂ < 9.0 kPa, increase FiO ₂ along scale below. If PaO ₂ > 10.0 kPa, decrease FiO ₂ along scale below. Minimum FiO ₂ –30% | If PaO ₂ < 9.0 kPa, increase FiO ₂ along the scale below and increase P _{High} by 1 cmH ₂ O. If pressure limit is reached, increase T _{High} by 0.1 s. If PaO ₂ > 10.0 kPa, decrease FiO ₂ along scale below and decrease P _{High} by 1 cmH ₂ O. If P _{High} is 20 cmH ₂ O or less, decrease T _{High} by 0.1 s. |
| FiO ₂ scale | 0.3 0.4 0.5 0.6 0.7 0.8 0.9 1.0 | 0.3 0.4 0.5 0.6 0.7 0.8 0.9 1.0 |
| FiO ₂ -based adjustments | FiO ₂ 0.3 0.4 0.5 0.6 0.7 0.8 0.9 1.0 PEEP 6 8 10 12 14 16 18 20 | |
| pH-based adjustments** | If pH is 7.25 or less, increase respiratory rate by 2 (up to 34 bpm). If pH is 7.5 or greater, decrease respiratory by 2 (down to 12) | If pH is 7.25 or less, increase P _{High} by 1 cmH ₂ O. If P _{High} ≥ 25 and T _{High} < 6, increase T _{High} by 0.1 s. If pH ≥ 7.5 – if P _{High} > 20, decrease P _{High} by 1 cmH ₂ O. If P _{High} ≥ 25 and T _{High} ≥ 5.5, decrease T _{High} by 0.1 s. |

*T low will approximate to 75% peak-expiratory flow rate

**If casualty pH deviates above 7.5, an alkalotic management strategy will be introduced to the protocol

The value of P_{plat} is calculated directly from the simulator and represents the end-inspiratory lung pressure. The $PEEP_t$ is taken as the end-expiratory lung pressure. A value of ΔP of 15 cmH₂O or greater is strongly associated with mortality [33].

Mechanical power is an index that attempts to describe the total energy delivered to the lungs by the ventilator and is calculated as:

$$MP = 0.098 \times VR \times V_T \times (P_{peak} - 0.5 \times \Delta P) \tag{2}$$

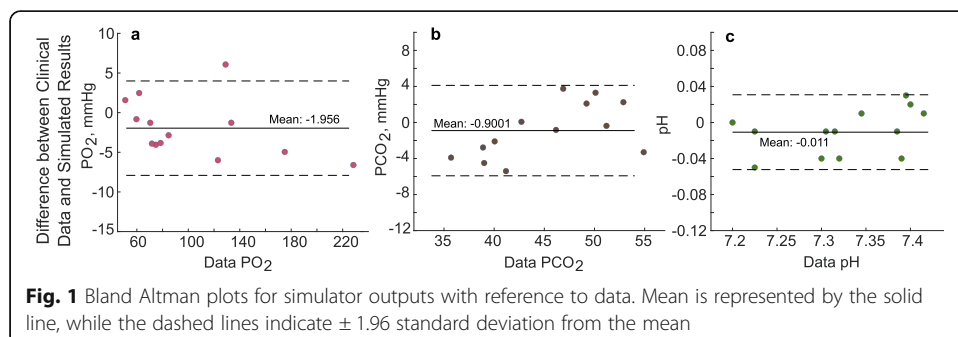
where VR is the ventilator set respiratory rate, V_T is the tidal volume and P_{peak} is the peak inspiratory pressure. Values of MP greater than 22 J/min have been shown to independently predict VILI and increased mortality [34]. All data are presented as mean (\pm SE).

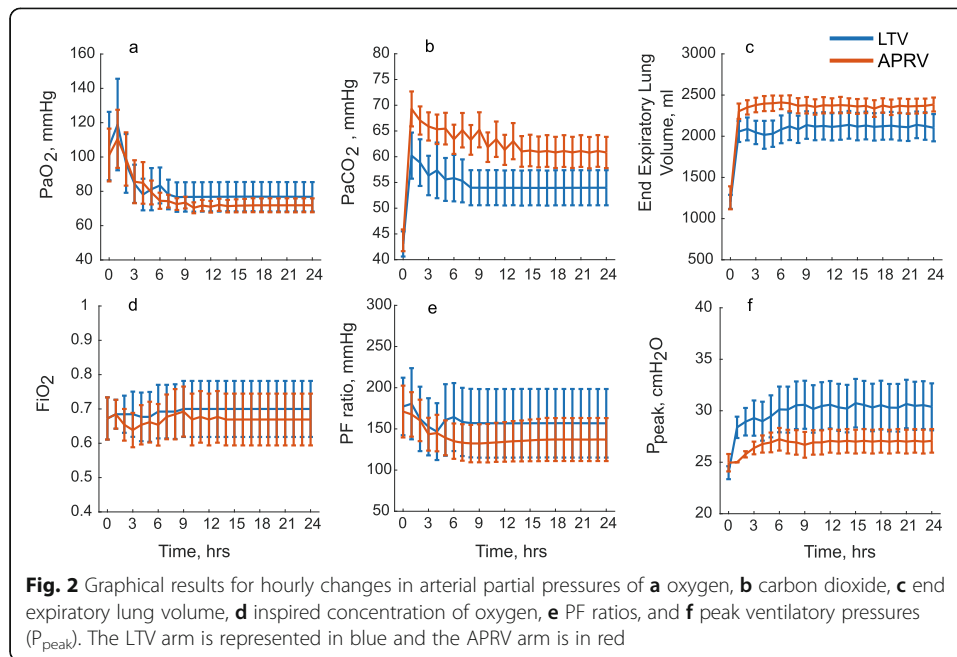
Results

Figure 1 shows the results of model calibration to values obtained from data for arterial partial pressures of oxygen and carbon dioxide (PaO_2 , $PaCO_2$) and arterial pH, as Bland Altman plots. The model was also calibrated to nominal values of cardiac output (CO), extravascular lung water (EVLW), mean arterial pressure (MAP) and mean pulmonary arterial pressures (MPAP) at the same time. These additional parameters are recorded in Table 1. The physiology of one of the in vivo casualties was too deranged to model. Casualty number 9 had initial $PaCO_2$ values ranging from 12.0 to 14.3 kPa over the first 4 h of hospital treatment, and in the absence of a clinical explanation, the simulator was unable to replicate the data. The remaining 13 in silico casualties completed 24 h of ventilatory modelling with each ventilatory mode. An alkalosis management strategy to correct a pH of greater than 7.5 was not required.

Effect of ventilation mode on gas exchange

Figure 2 shows the hourly results for inspired concentration of oxygen (FiO_2), PaO_2 , $PaCO_2$ and PF ratios (PaO_2/FiO_2). Values for both FiO_2 and PaO_2 stabilise by approximately hour 12 of the study and then remain static for the remainder of the trial. By the end of 24 h, a mean FiO_2 of 0.70 (\pm 0.08) and 0.67 (\pm 0.08) was applied, achieving a mean PaO_2 of 10.24 (\pm 1.14) kPa and 9.58 (\pm 0.54) kPa in the LTV and APRV arms, respectively. This mean value is skewed above the trial target value of achieving a PaO_2 of 9.0 kPa by two moderate cases responding very well to mechanical ventilation on the lowest FiO_2 permitted by our ventilatory protocol (0.3). $PaCO_2$ in the LTV arm remains lower than that seen in the APRV arm throughout the study with final mean values of





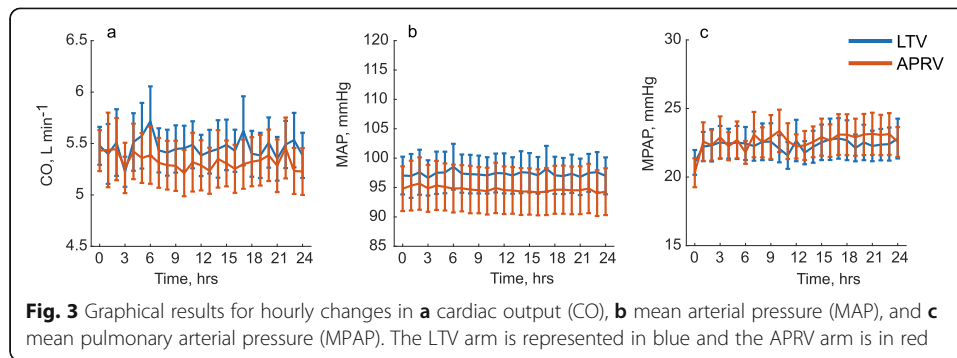
7.20 (± 0.45) kPa and 8.11 (± 0.40) kPa, respectively. PF ratios diverge and stabilise after approximately 10 h of mechanical ventilation with final mean values of 157 (± 42) mmHg and 137 (± 26) mmHg for LTV and APRV, respectively.

Effect of ventilation mode on ventilatory parameters

Figure 2 also shows the hourly results for end-expiratory lung volume (EELV) and peak ventilatory pressures. Predictably, EELV quickly increases in our casualties once they are mechanically ventilated. Values then remain relatively constant throughout the remaining 24-hour period. Casualties in the LTV arm had a mean EELV of 2103 (± 165) ml at the end of the trial compared to a mean EELV of 2385 (± 85) ml in the APRV group. Peak airway pressure in the LTV group remains slightly higher than that seen in the APRV group throughout the trial period with mean values of 30.4 (± 2.2) cmH₂O and 27.1 (± 1.2) cmH₂O, respectively. As dictated by our ventilatory protocol, mean tidal volume in the LTV group is 420 (± 2.79) ml (approximating to 6 ml/kg) at the end of the trial.

Effect of ventilation mode on haemodynamics

Figure 3 demonstrates the course of mean arterial pressure, cardiac output and mean pulmonary artery pressure during the study. Mean arterial pressures are relatively constant in both modes of ventilation with final mean values of 97.0 (± 3.1) mmHg in the LTV group and 94.3 (± 4.0) mmHg in the APRV group. Similarly, there is little difference in mean pulmonary artery pressure with final mean values of 22.8 (± 1.5) mmHg for LTV and 22.6 (± 1.1) mmHg for APRV. Mean cardiac output at the end of the trial is 5.38 (± 0.22) l/min and 5.23 (± 0.23) l/min in the LTV and APRV arms, respectively.



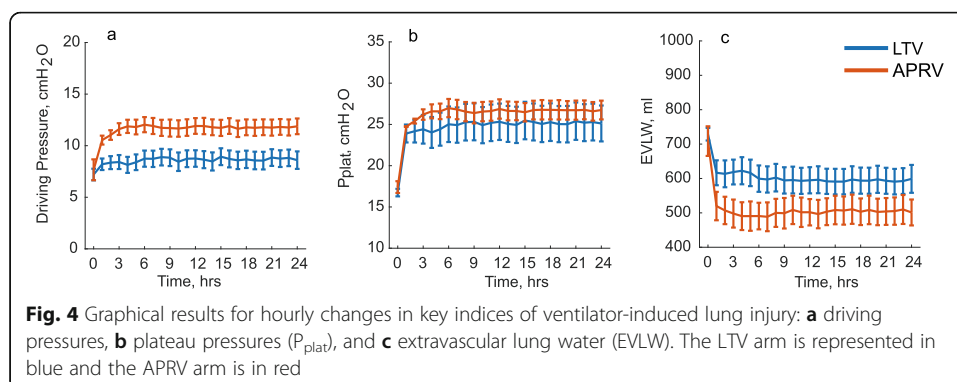
Effect of ventilation mode on VILI indices and extravascular lung water

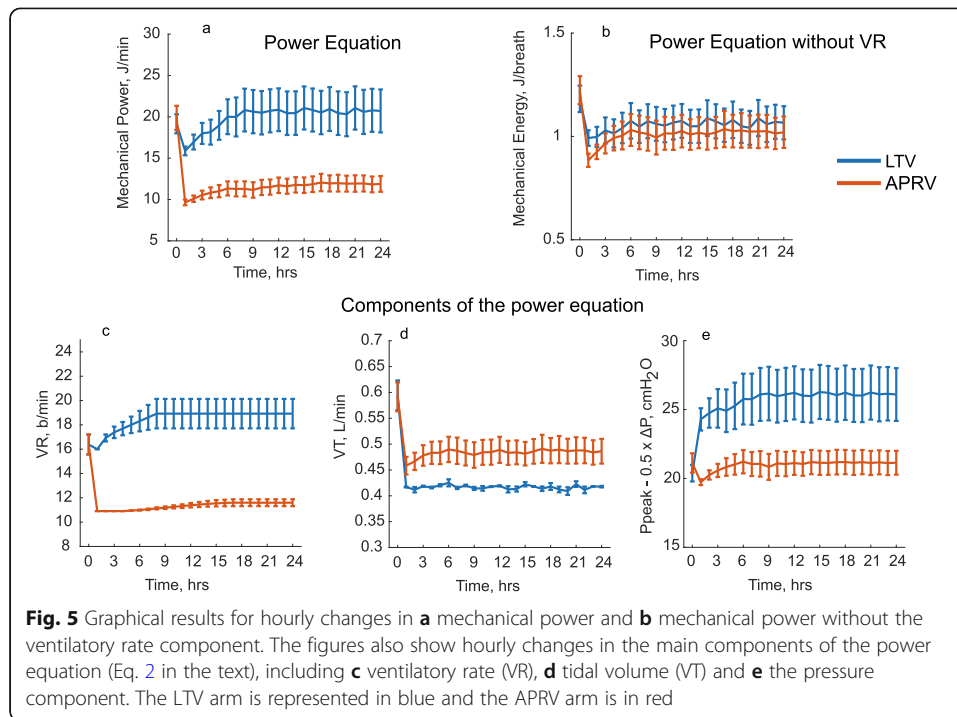
Figure 4 shows the hourly results for driving pressure, plateau pressures and extravascular lung water. The driving pressure increases to a steady state mean value of $8.6 (\pm 0.85)$ cmH₂O and $11.9 (\pm 0.8)$ cmH₂O in LTV and APRV, respectively, within 8 h of mechanical ventilation. The mean plateau pressure in the LTV group is $25.1 (\pm 2.2)$ cmH₂O. Predictably, extravascular lung water decreases in both arms of the study once mechanical ventilation is initiated and again reaches a stable value following approximately 8 h of mechanical ventilation. At 24 h, the mean extravascular lung water content in the LTV group is $600 (\pm 41)$ ml and $501 (\pm 38)$ ml for the APRV group. Figure 5 shows the changes in ventilator-delivered mechanical power and its constituent parts, including the V_R , V_T and the pressure component $P_{peak} - 0.5 \times \Delta P$, separately. Figure 5 also displays the mechanical energy delivered by the ventilator in a single breath, calculated by removing V_R from the power equation (Fig. 5b). Final values of mechanical power were calculated to be $20.7 (\pm 2.6)$ J/min for LTV and $11.9 (\pm 1.0)$ J/min in APRV.

Discussion

This study presents an examination of the potential outcomes for a cohort of patients suffering PBLI managed with two different ventilatory strategies during their first 24 h of mechanical ventilation. Our ventilatory protocol proved to be a reliable and robust decision-making framework. It achieved stable ventilated casualties within approximately 8–10 h despite significant lung injury in most cases.

The study suggests a good response to both LTV-directed mechanical ventilation and APRV in young otherwise healthy adults with PBLI. Epidemiological data gathered





following the conflict in Afghanistan demonstrates a good response to LTV in young adult males with PBLI. This response is replicated in this modelling study. APRV also performs well and achieves the target arterial oxygenation and greater functional residual capacity implying reduced atelectasis. Our most important mortality-related outcomes are driving pressure and mechanical power. APRV applied a greater driving pressure than LTV throughout the study; however, in this cohort of patients, driving pressure in both modes of ventilation remained comfortably below the 15 cmH₂O ceiling above which mortality is predicted to increase. Applied mechanical power, on the other hand, is significantly lower in the APRV group. Patients ventilated with APRV experienced lower levels of applied mechanical power to the respiratory system, with all the patients in the APRV arm below the 22 J/min threshold for increased mortality. In comparison, 4 out of 13 patients in the LTV arm breached this threshold. As an index of risk for VILI, the concept of mechanical power is of growing interest within the clinical community [35, 36]. Our results indicate that LTV delivers a higher mechanical power to the lung than APRV (20.7 J/min vs 11.9 J/min). A closer examination of the component parts of the mechanical power applied by the ventilator to our casualties (Fig. 5 c–e) reveals that the mechanical ventilatory rate required in the APRV cohort was consistently less than in the LTV group. Removing the effect of ventilatory rate from the mechanical power calculation (as seen in Fig. 5b), we see that in both modes of ventilation, the energy delivered in a breath then approximates in value. This highlights the importance of ventilatory rate as a factor in the mechanical power delivered to the respiratory system during mechanical ventilation.

While APRV performs as well as, and in some important respects better than LTV in this study, the clinically and statistically significant benefits relating to oxygenation that

have been demonstrated in animal models of acute lung injury were not seen [16, 17]. Note, however, that such models use sepsis or applied chemical injury to induce acute lung injury. Sepsis (or other ongoing inflammatory processes) produce a persisting systemic epithelial failure and inflammatory cascade unlike the more geographic injury seen in primary blast lung injury. Indeed, trauma-related acute lung injury is recognised as a milder and more responsive disease compared to non-trauma-related acute lung injury [37, 38]. Thus, we can expect that differences related to oxygenation between effective treatments will be more marginal in PBLI. Additionally, these animal trials pre-date our understanding of the importance of driving pressure and applied mechanical power as predictors of VILI and patient outcomes. Human trials of APRV do demonstrate more modest outcomes for APRV when compared to LTV ventilation and are more consistent with our results [39–41]. When combined with the application of an adaptive and responsive ventilatory protocol, as would be experienced by human casualties in intensive care, rather than a fixed ventilatory pattern typically seen in animal modelling, the results for APRV reported here seem both credible and promising.

The study has a number of limitations. The size of the study is limited to 13 patients, constrained by the availability of adequate clinical datasets. This represents the best data currently available and facilitates our observational and iterative study in which we do not seek to offer outcomes of statistical significance. The casualties are all young adult males with no prior physical co-morbidity and no other injuries. This should be considered when extrapolating the results described to the wider population. The pharmacological effects of the sedative drugs that would be required to facilitate mechanical ventilation are not modelled. As a result, our *in silico* casualties have an artificially normal native mean arterial blood pressure and cardiac output. To attenuate the effects of confounding factors, we further assume that the patients are fully sedated, autonomic reflex modules are not enabled and patient ventilation is fully determined by the ventilator, potentially reducing the impact on indices of VILI [42]. Although the extensive computational model allows for the calculations of surrogate markers of VILI such as mechanical power and driving pressure, these need to be supported by direct histological evidence from clinical studies. Additionally, no changes were made to the underlying pathological insult suffered by each casualty over the 24 h of ventilation in which this study occurs.

Conclusions

The results of this study suggest that PBLI casualties will respond well to either of the two modes of mechanical ventilation considered. APRV achieved the specified ventilatory targets with a lower PF ratio, sub-injury threshold levels of mechanical power, and lower levels of extravascular lung water compared to conventional LTV. Use of APRV may therefore offer casualties with PBLI important mortality-related benefits.

Abbreviations

APRV: Airway pressure release ventilation; ARDS: Acute respiratory distress syndrome; CO: Cardiac output [ml min^{-1}]; EELV: End expiratory lung volume [ml]; EVLW: Extravascular lung water [ml]; FiO_2 : Fraction of inspired air constituting of oxygen; I:E ratio: Ratio of inspiration time-expiration time; ICU: Intensive care unit; LTV: Low tidal volume ventilation; a lung protective mechanical ventilation strategy; MAP: Mean arterial pressure [mmHg]; *MP*: Mechanical power [J/min]; MPAP: Mean pulmonary arterial pressure [mmHg]; P_{High} : Applied 'high' value of continuous positive pressure [cmH_2O]; P_{Low} : Applied 'low' value of continuous positive pressure [cmH_2O]; PaCO_2 : Partial pressure of carbon dioxide in arterial compartment [kPa]; PaO_2 : Partial pressure of oxygen in arterial compartment [kPa]; PBLI: Primary blast lung injury; *PEEPt*: Total positive end expiratory pressure [cmH_2O]; PF ratio: Ratio of arterial pressure of oxygen to fraction of oxygen in inspired air; P_{peak} : Peak inspiratory pressure [cmH_2O]; P_{plat} : Plateau pressure [cmH_2O]; T_{High} : Duration of P

high [s]; T_{Low} : Duration of P low [s]; VILI: Ventilator-induced lung injury; V_R : Respiration rate set by the ventilator [breaths per minute, bpm]; V_T : Ventilator-delivered tidal volume [ml]; ΔP : Airway driving pressure, difference between plateau pressure and total PEEP [cmH₂O]

Acknowledgements

We are grateful to Dr Emrys Kirkman and his colleagues at the Defence Science and Technology Laboratories (Porton Down, UK) for supplying the detailed in vivo data^{21,22} that underpinned their study of the impact of blast lung on the response to resuscitation which were used in the development of our in-silico model.

Authors' contributions

AD – Principal modeller. TES – Original concept, study design. MH – Modeller and technical reviewer. DGB – Co-supervisor, technical reviewer. JGH – Project supervisor, model design and technical reviewer. All authors contributed to the drafting of the manuscript.

Funding

This work was funded by the UK Engineering and Physical Sciences Research Council (Grant No. EP/P023444/1) and Surgeon General's Research Fund, Ministry of Defence, UK.

Availability of data and materials

All data generated and/or analysed during this study are included in this published article [and its supplementary information files].

Ethics approval and consent to participate

The study was conducted entirely in silico and did not involve human or animal participation.

Consent for publication

The manuscript contains no personal or otherwise sensitive data.

Competing interests

We have no competing interests to declare.

Author details

¹Academic Department of Military Anaesthesia and Critical Care, Royal Centre for Defence Medicine, ICT Centre, Birmingham B15 2SQ, UK. ²School of Engineering, University of Warwick, Coventry CV4 7AL, UK. ³School of Mathematics and Physics, University of Portsmouth, Portsmouth, UK. ⁴Anaesthesia & Critical Care, Division of Clinical Neuroscience, School of Medicine, University of Nottingham, Nottingham NG7 2UH, UK. ⁵Nottingham University Hospital NHS Trust, Nottingham NG7 2UH, UK.

Received: 4 March 2020 Accepted: 4 June 2020

Published online: 23 June 2020

References

- Wolf SJ, Bebarata VS, Bonnett CJ, Pons PT, Cantrill SV (2009) Blast injuries. *Lancet* 374(9687):405–415
- de Ceballos JP, Turegano-Fuentes F, Perez-Diaz D, Sanz-Sanchez M, Martin-Llorente, Guerrero-Sanz JE et al (2005) 11 March 2004: the terrorist bomb explosions in Madrid, Spain—an analysis of the logistics, injuries sustained and clinical management of casualties treated at the closest hospital. *Crit Care* 9(1):104–111
- Mackenzie I, Tunnicliffe B, Clasper J, Mahoney P, Kirkman E (2013) What the intensive care doctor needs to know about blast-related lung injury. *J Intens Care Soc* 14(4):303–312
- Scott TE, Kirkman E, Haque M, Gibb IE, Mahoney P, Hardman JG (2017) Primary blast lung injury—a review. *Br J Anaesth* 118(3):311–316
- Li J, Topaz M, Xun W, Li W, Wang X, Liu H et al (2012) New swine model of infected soft tissue blast injury. *J Trauma Acute Care Surg* 73(4):908–913
- Horst K, Simon T, Pfeifer R, Teuben M, Almahmoud Q, Zhi S et al (2016) Characterization of blunt chest trauma in a long-term porcine model of severe multiple trauma. *Sci Rep* 6:39659
- Guy RJ, Kirkman E, Watkins PE, Cooper GJ (1998) Physiologic responses to primary blast. *J Trauma* 45(6):983–987
- Herrmann J, Tawhai MH, Kaczka DW (2019) Computational modeling of primary blast lung injury: implications for ventilator management. *Mil Med* 184(1):273–281
- Scott TE, Haque M, Das A, Cliff I, Bates DG, Hardman JG (2019) Efficacy of continuous positive airway pressure (CPAP) in casualties suffering from primary blast lung injury: a modeling study. 41st Annual International Conference of the IEEE Engineering in Medicine and Biology Society (EMBC), pp 4965–4968
- Haque M, Das A, Scott TE, Bates DG, Hardman JG (2019) The primary blast lung injury simulator: a new computerised model. *J R Army Med Corps* 165(1):45–50
- The Acute Respiratory Distress Syndrome Network (2000) Ventilation with lower tidal volumes as compared with traditional tidal volumes for acute lung injury and the acute respiratory distress syndrome. *New Engl J Med* 342: 1301–1308
- Testerman GM, Breitman I, Hensley S (2013) Airway pressure release ventilation in morbidly obese surgical patients with acute lung injury and acute respiratory distress syndrome. *Am Surg* 79:242–246
- Räsänen J, Downs JB, Stock MC (1988) Cardiovascular effects of conventional positive pressure ventilation and airway pressure release ventilation. *Chest*. 93(5):911–915
- Räsänen J, Cane RD, Downs JB, Hurst JM, Jousela IT, Kirby RR et al (1991) Airway pressure release ventilation during acute lung injury: a prospective multicenter trial. *Crit Care Med* 19(10):1234–1241

15. Burchardi H (1996) New strategies in mechanical ventilation for acute lung injury. *Eur Respir J* 9(5):1063–1072
16. Roy S, Sadowitz B, Andrews P, Gatto LA, Marx W, Ge L et al (2012) Early stabilizing alveolar ventilation prevents acute respiratory distress syndrome: a novel timing-based ventilatory intervention to avert lung injury. *J Trauma Acute Care Surg* 73(2):391–400
17. Roy S, Habashi N, Sadowitz B, Andrews P, Ge L, Wang G et al (2013) Early airway pressure release ventilation prevents ARDS—a novel preventive approach to lung injury. *Shock* 39(1):28–38
18. Zhou Y, Jin X, Lv Y, Wang P, Yang Y, Liang G et al (2017) Early application of airway pressure release ventilation may reduce the duration of mechanical ventilation in acute respiratory distress syndrome. *Intensive Care Med* 43(11):1648–1659
19. Taylor D, Camporota L, Zhou Y, Kang Y (2018) Estimation of true driving pressure during airway pressure release ventilation. *Intensive Care Med* 44:1364–1365
20. Garner JP, Watts S, Parry C, Bird J, Kirkman E (2009) Development of a large animal model for investigating resuscitation after blast and hemorrhage. *World J Surg* 33(10):2194–2202
21. Garner J, Watts S, Parry C, Bird J, Cooper G, Kirkman E (2010) Prolonged permissive hypotensive resuscitation is associated with poor outcome in primary blast injury with controlled hemorrhage. *Ann Surg* 251(6):1131–1139
22. Kirkman E, Watts S, Cooper G (2011) Blast injury research models. *Philos Trans R Soc Lond Ser B Biol Sci* 366(1562):144–159
23. McCahon RA, Columb MO, Mahajan RP, Hardman JG (2008) Validation and application of a high-fidelity, computational model of acute respiratory distress syndrome to the examination of the indices of oxygenation at constant lung-state. *Br J Anaesth* 101(3):358–365
24. Das A, Haque M, Chikhani M, Cole O, Wang W, Hardman JG et al (2017) Hemodynamic effects of lung recruitment maneuvers in acute respiratory distress syndrome. *BMC Pulm Med* 17(1):34
25. Laviola M, Das A, Chikhani M, Bates DG, Hardman JG (2019) Computer simulation clarifies mechanisms of carbon dioxide clearance during apnoea. *Brit J Anaesth* 122(3):395–401
26. Saffaran S, Wang W, Schmitt W, Becker-Pelster EM, Hardman JG, Weimann G et al (2018) Inhaled sGC modulator can lower pH in patients with COPD without deteriorating oxygenation. *CPT Pharmacometrics Syst Pharmacol* 8:491–498
27. Saffaran S, Das A, Hardman JG, Yehya N, Bates DG (2019) High-fidelity computational simulation to refine strategies for lung-protective ventilation in paediatric acute respiratory distress syndrome. *Intensive Care Med* 7:1055–1057
28. Scott TE, Johnston AM, Keene DD, Rana M, Mahoney PF (2019) Primary blast lung injury: the UK military experience. *Mil Med*. <https://doi.org/10.1093/milmed/usz453>
29. ARDS Definition Task Force (2012) Acute respiratory distress syndrome: The Berlin Definition. *JAMA* 307(23):2526–2533
30. Aoyama H, Yamada Y, Fan E (2018) The future of driving pressure: a primary goal for mechanical ventilation. *J Intensive Care* 6:64
31. Das A, Camporota L, Hardman JG, Bates DG (2019) What links ventilator driving pressure with survival in the acute respiratory distress syndrome? A computational study. *Respir Res* 20:29
32. Tonetti T, Vasques F, Rapetti F, Maiolo G, Collino F, Camporota L et al (2017) Driving pressure and mechanical power: new targets for VILI prevention. *Ann Transl Med* 5(14):286
33. Amato M, Meade M, Slutsky AS, Brochard L, Costa E, Schoenfeld DA et al (2015) Driving pressure and survival in the acute respiratory distress syndrome. *N Engl J Med* 372:747–755
34. Parhar KK, Zjadewicz K, Soo A, Sutton A, Zjadewicz M, Doig L et al (2019) Epidemiology, mechanical power and 3-year outcomes in acute respiratory distress syndrome patients using standardized screening. An observational cohort study. *Ann Am Thorac Soc* 16(10):1263–1272
35. Cressoni M, Gotti M, Chiurazzi C, Massari D, Algieri I, Amini M et al (2016) Mechanical power and development of ventilator-induced lung injury. *Anesthesiology* 124(5):1100–1108
36. Gattinoni L, Marini JJ, Collino F, Maiolo G, Rapetti F, Tonetti T et al (2017) The future of mechanical ventilation: lessons from the present and the past. *Crit Care* 21:183
37. Calfee CS, Eisner MD, Ware LB, Thompson BT, Parsons PE, Wheeler AP et al (2007) Trauma-associated lung injury differs clinically and biologically from acute lung injury due to other clinical disorders. *Crit Care Med* 35(10):2243–2250
38. Ware LB, Eisner MD, Thompson BT, Parsons PE, Matthay MA (2004) Significance of von Willebrand factor in septic and nonseptic patients with acute lung injury. *Am J Respir Crit Care Med* 170(7):766–772
39. Sydow M, Burchardi H, Ephraim E, Zielmann S, Crozier TA (1994) Long-term effects of two different ventilatory modes on oxygenation in acute lung injury. Comparison of airway pressure release ventilation and volume-controlled inverse ratio ventilation. *Am J Respir Crit Care Med* 149(6):1550–1556
40. González M, Arroliga AC, Frutos-Vivar F, Raymonds K, Esteban A, Putensen C et al (2010) Airway pressure release ventilation versus assist-control ventilation: a comparative propensity score and international cohort study. *Intensive Care Med* 36(5):817–827
41. Maxwell RA, Green JM, Waldrop J, Dart BW, Smith PW, Brooks D et al (2010) A randomized prospective trial of airway pressure release ventilation and low tidal volume ventilation in adult trauma patients with acute respiratory failure. *J Trauma* 69(3):501–510
42. Huhle R, Serpa Neto A, Schultz MJ, Gama de Abreu M (2018) Is mechanical power the final word on ventilator-induced lung injury? -no. *Ann Transl Med* 6(19):394

Publisher's Note

Springer Nature remains neutral with regard to jurisdictional claims in published maps and institutional affiliations.