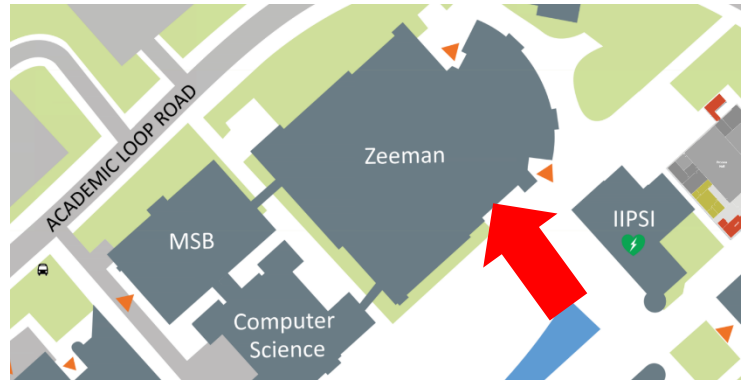


Directions to D1.07

First floor of the Zeeman building
(in the Complexity Science centre)

[Here is D1.07 on the interactive campus map.](#)

Step 1: Enter the Zeeman building through the **main entrance**



Step 2: Immediately turn **LEFT** and walk past computer rooms A0.01-A0.03 and through the doors marked “Mathematics Institute”



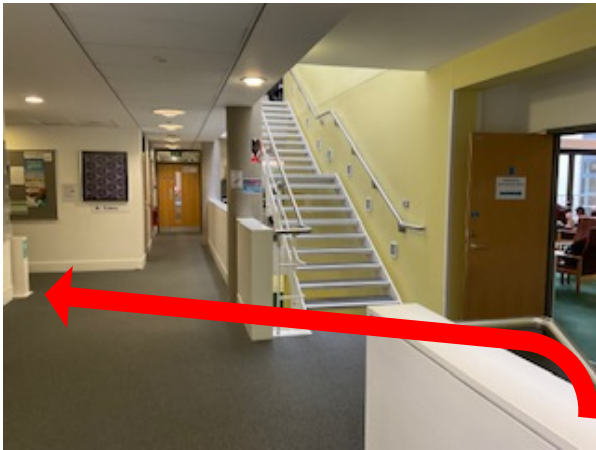
Step 3: (you should now be outside the mathematics taught programme’s office B0.01)
Turn right and walk up the stairs one floor



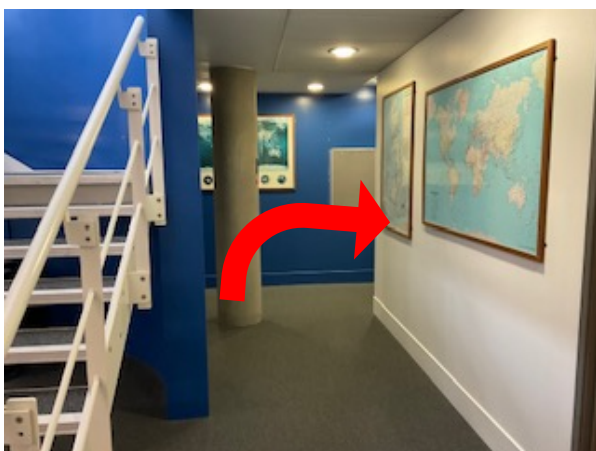
Step 4: (you should now be next to the maths staff common room and the MRC)

Just in front of you, **take the corridor on the left**

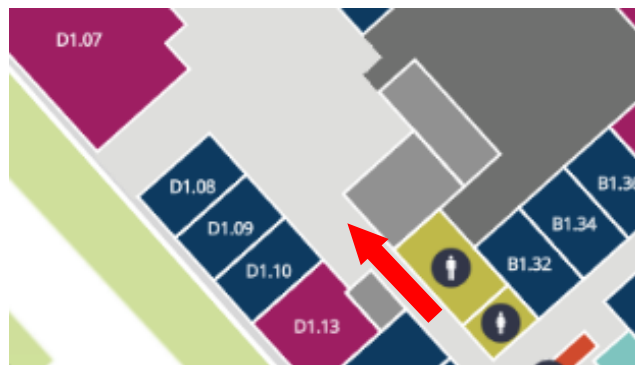
(there should be several maps on the walls of the corridor)



Step 5: At the end of the corridor, **turn right**



Step 6: Go through the door to enter the Complexity Science Common room



Step 7: D1.07 is directly in front of you

