

PARTICIPATE

Welcome to your new look Participate

Welcome to the first West Midlands wide primary care research update for general practices, pharmacies, GPs, practice nurses, CCGs, study teams and all those interested in research across the whole of the West Midlands. Previously there have been separate newsletters for south, central and north areas, but with the three Clinical Research Network (CRN) primary care teams increasingly working as one we felt it was time for a single newsletter. However, the middle pages will continue to have a local focus.



With the 'Five Year Forward View' the NHS is again going through a significant period of change. In primary care, not least in general practice, new models of care are being developed and set-up: GP Federations, primary and acute care systems (PACs) and multispecialty community providers (MCPs), super practices, super partnerships, etc.

Currently much of the way the CRN supports practices to participate in research is at individual practice level, e.g. each practice has a named CRN research facilitator and is individually remunerated in the Research Site Incentive Scheme. This may need to change to reflect the new models being set up across the West Midlands.



We would very much like to hear from practices, and those developing and setting up these new models, on how we could support the research delivery by working at the level of the new models, in addition to working directly with practices. For example, a GP federation might agree to pool the research support resources its research active practices receive, and the support we are providing, with all federation practices working together to deliver research; or a super practice might set up a 'hub and spoke' model with spoke practices referring patients to research clinics at a hub practice.

We are open to any ideas you have on this, please let your local primary care CRN contact know or contact me at m.porcheret@keele.ac.uk or on 01782 734861.

The call for applications for the 2017 RCGP/CRN Awards, which recognise excellence and innovation in delivering NIHR by research active NHS GPs and general practices, will be announced soon. There will be a practice award and a First5 award. Further details on the RCGP website or see page 11.

In this newsletter we feature articles on:

- PACT: will treating asthmatic children according to genetic status improve their quality of life and asthma control? (page 4)
- STILTS2: assessing the genetic basis of thinness; identification of genes that contribute to thinness may provide further insights into the regulation of body weight and obesity resistance (page 3)
- ARCHIE: aims to determine the effect of giving the antibiotic co-amoxiclav to 'at risk' children within five days of them becoming ill with flu or influenza-like illness (page 4)

If you would like to contribute to Participate or for further information please contact Jenny Oskiera, email: j.oskiera@warwick.ac.uk or jenny.oskiera@nih.ac.uk

Points of Interest

- Study - Pact
- Study – Stilts2
- Results – Start2Quit
- CRN – RCGP and CRN Awards 2017

Contents

Studies	2-5
Local News	6-7
Study Results	8-10
RCGP	11
Contact Information	12

i-WOTCH

IMPROVING THE WELLBEING OF PEOPLE WITH OPIOID TREATED CHRONIC PAIN

Funding Acknowledgement: This project is funded by the National Institute for Health Research, Health Technology Assessment (project number 14/224/04). The views and opinions expressed therein are those of the authors and do not necessarily reflect those of the HTA, NIHR, NHS or the Department of Health.

Seeking GP practices to host i-WOTCH study on opioid withdrawal for chronic pain

We are currently recruiting GP practices across the whole West Midlands region, to take part in the I-WOTCH study. Clinical Research Network nurses will identify eligible participants by initially searching and screening GP lists from those that are recruited to the study. Eligible patients who provide consent will be randomised into either the active arm (behaviour-change group educational intervention with associated handouts, an educational DVD, mindfulness and relaxation CDs plus an opioid information booklet and trained I-WOTCH nurse support package) or control arm (usual care plus the opioid information booklet and relaxation CD). The support programme aims to improve the everyday functioning of people living with chronic non-malignant pain and gradually reduce their opioid use. All participants in both groups will receive questionnaire packs at baseline, four, eight and twelve months. Our primary outcome measure is activities of daily living and main secondary outcome measure is opioid use. Other outcome measures include pain, sleep, quality of life and resource use.

Strong opioids are increasingly being prescribed for chronic non-malignant pain including expensive transdermal preparations. However there are limited data supporting the effectiveness of long-term use with adverse effects often outweighing the benefits of long term opioid treatment for pain. We have recruited and trained nurses and lay facilitators to co-deliver the I-WOTCH intervention with the nurses providing tailored tapering advice at one-to-one sessions and follow-up phone calls. The group course includes sessions about pain, opioid education, acceptance, and non-drug self-management techniques including stress management, pacing, relaxation, mindfulness, recognising unhelpful thoughts, and overcoming barriers.

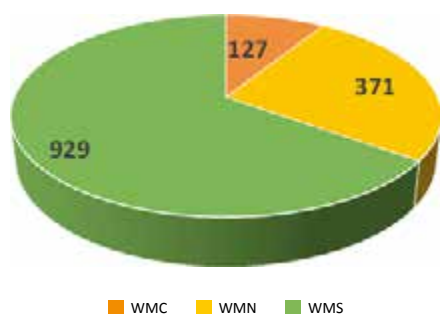
If your GP practice is interested in the study or for more information, please contact your local facilitator, please see page 12.

This national study draws to a close in September 2017, and we wish to express our thanks to all the West Midlands practices who have contributed to its success.

The **CANDID** target recruitment is 20,000 with a further 2,000 required per cohort for validation by the end of September or until the figure is reached whichever is sooner. Total recruitment is 21,287 – nationally an additional 900 colorectal patients and 1,813 lung patients are required.

Please continue to recruit. Thank you.

CANDID RECRUITS – WEST MIDLANDS AS AT MAY 2017



CONGRATULATIONS!

A very special thanks to a number of practices reaching outstanding recruitment to the study; our top ten in the West Midlands are:

CANDID

CANcer Diagnosis Decision rules

PRACTICES	NUMBER OF RECRUITS
The Atherstone Surgery	145
The New Dispensary Warwick	114
Sherbourne Medical Centre Leamington Spa	112
Plas Ffynnon Medical Practice Oswestry	76
Spring Gardens Group Medical Practice Worcester	71
Parkside Medical Practice Brownhills	52
Eve Hill Medical Practice Dudley	49
Corbett Medical Practice Droitwich Spa	48
Bennfield Surgery Rugby	46
Mansion House Surgery Stone	45

For any of you interested in the qualitative work that was carried out before the main study started there have been a couple of papers published:

Mansell G, Shapley M, van der Windt D, Sanders T, Little P. Critical items for assessing risk of lung and colorectal cancer in primary care: a Delphi study. *The British Journal of General Practice*. 2014;64(625):e509-e515. doi:10.3399/bjgp14X681001.

McLachlan S, Mansell G, Sanders T, et al. Symptom perceptions and help-seeking behaviour prior to lung and colorectal cancer diagnoses: a qualitative study. *Family Practice*. 2015;32(5):568-577. doi:10.1093/fampra/cmv048.

For further information, please contact your local research facilitator, details on page 12.

ALL HEART

(Allopurinol and cardiovascular outcomes in patients with ischaemic heart disease) is a major multi-centre trial of allopurinol up to 600mg daily versus no treatment added to usual therapy in patients aged 60 years and over with ischaemic heart disease. The aim is to establish whether allopurinol improves cardiovascular outcomes in this population.

Suitable patients are identified in primary care by their GPs; those that respond favourably attend an appointment with a research nurse. Patients will be randomised to either allopurinol or no drug to be given in addition to their usual medications. Allopurinol will be started at 100mg daily for two weeks, then titrated to 300mg daily for two weeks, then titrated to 600mg daily if tolerated. Patients will then be followed up for a period of around four years to count the number of heart attacks, strokes and cardiovascular deaths that occur.

Participating practices will receive a fee for completing the database search, in addition to per patient payments.

Recruitment is going well in the West Midlands. Would your practice be interested in helping us with this important study?

Many thanks to the 66 practices who have already signed up, and have recruited 380 patients to date.

For further details, please contact your local research facilitator, details on page 12. More details can also be found on the trial website: www.allheartstudy.org



STUDY INTO LEAN AND THIN SUBJECTS



Image courtesy of Grant Cochrane at Free@laphotos.net

STILTS2 assesses the genetic basis of thinness.

Identification of genes that contribute to thinness may provide further insights into the regulation of body weight and obesity resistance, which may lead to rational preventative and therapeutic strategies for weight disorders.

How will the practice be involved?

- The practice will run a search to identify potentially eligible patients at the practice (using disease specific read codes)
- GPs will be asked to screen the list of potentially eligible patients
- The practice will send out invitation letters and information packs
- If a patient is interested they respond to the study team who will send out a saliva kit for DNA collection and a simple questionnaire to record eating/exercise behaviours

Main inclusion criteria

- Age 18-65 at time of recruitment
- BMI < 18kg/m²
- No known history of eating disorders, renal, liver or gastrointestinal disease

If you would like further information, please contact your local facilitator, details on page 12

UNIVERSITY OF BIRMINGHAM



Helicobacter eradication to prevent ulcer bleeding in aspirin users: a large simple randomised controlled trial

Principal Investigator Birmingham region: Prof. Richard Hobbs.

Locations: ~400 GP practices in Birmingham and Black Country, Worcestershire, Coventry and Warwickshire, Shropshire, Staffordshire, Herefordshire, Stoke, Telford and Wrekin, Wolverhampton, Sussex & Surrey, Nottingham, Durham, Southampton, and Oxford.

Enrolment Period: 2012 – June 2016

Participants: Men and women aged 60+, infected with *H. pylori*, who are using aspirin < 326mg daily

Other Information: This trial has been preceded by a successful pilot study, funded by the MRC. Practices will be reimbursed for their time.

Helicobacter Eradication Aspirin Trial

Use of aspirin for cardiovascular prophylaxis is widespread and increasing. The main hazard is ulcer bleeding. This is usually associated with *H. pylori* infection. It is important to determine whether this can be reduced or prevented by *H. pylori* eradication. The trial hypothesis is that aspirin does not itself cause peptic ulcers, but that it promotes bleeding of ulcers caused by *H. pylori*. Given the scale of aspirin use, its continuing increase and its contribution to ulcer bleeding, how to deal with this problem is arguably the most important question with regard to current iatrogenic medicine.

Intervention and Clinic: Suitable patients will be identified by their surgery, using an automated search, and then asked to attend an appointment with a University Research Nurse or Practice Nurse (relevant training will be provided) to consent to the trial and take a *H. pylori* breath test. Those with a positive result will be randomised to receive a one week course of either eradication treatment or placebo, supplied by the trial centre. No follow-up visits for the patients are required, but any hospital admissions for ulcer bleeding will be recorded over a period of 2-3 years by the trial centre.

Further Information: if you would like to find out more, please contact your local facilitator, details on page 12.

PACT - Testing the Delivery of the Best Asthma Treatment Based on Genetics



A study by researchers from across the UK, funded by Action Medical Research, is aiming to discover whether treating asthmatic children according to their genetic status can improve their quality of life and asthma control.

One in every 11 children in the UK has asthma. When asthma is well managed, children can lead full and active lives. Unfortunately, not all asthma is well controlled. There is evidence that the routinely used controller medication salmeterol is ineffective in 1 of 7 cases. Previous work by Professor Somnath Mukhopadhyay from Brighton and Sussex Medical School suggests that certain gene variations are linked to poor asthma control in children.

As a result, working with general practitioners, PACT is designed to assess the effectiveness of prescribing children, whose asthma is inadequately controlled, either salmeterol or montelukast according to their beta2 receptor genetic status compared to standard asthma management regimes. Participants' genotype status is established from self-administered saliva tests.

PACT is novel as no hospital visits are required with all outcome data being completed by participants online at three monthly intervals for one year. This design allows participants to complete their quality of life and asthma control questionnaires at their convenience, with associated costs reduction.

At the end of the study, all participants and GPs will receive gene test and study results.

Healthcare professionals can find out more about the study at www.pactstudy.org.uk or by calling the Tayside Clinical Trials Unit on 01382 383932.

If your practice would like to take part, or would like further information, please get in contact with your local research facilitator, details on page 12.

ARCHIE - The early use of Anti-biotics for 'at-risk' Children with Influenza



Study Summary

Children with underlying medical conditions such as asthma, diabetes and cerebral palsy are 'at risk' of becoming more unwell from bacterial infections if they get flu. ARCHIE is a double-blind randomised placebo-controlled trial which aims to determine whether giving the antibiotic co-amoxiclav to 'at risk' children within five days of them becoming ill with flu or influenza-like illness might:

1. Help stop them from developing bacterial infections and becoming more unwell
2. Help them get better more quickly
3. Affect how well antibiotics work against similar infections in future

Practice Involvement: We are looking for practices to

- Identify and flag potentially eligible patients via a database screen prompt
- On presentation of an eligible patient during the winter season to call the ARCHIE recruitment hotline to inform central trial office if family happy to be contacted (approx. 5-10 min call)

A CRN nurse will then attend the patient at home for consent, baseline, randomization and study medication dispensing. The CRN nurse will carry out follow up including medical notes review. The practice may be asked to give additional information if their participant has an SAE.

Patient Involvement: In addition to the child completing a five day course of study medication a nose and throat swab will be taken. Family will be asked to complete weekly diary for a month after study entry.

Recruitment Status: Seasonal from October to April.

Funder: NIHR's Programme Grants for Applied Research Programme.



For further information, please contact your local research facilitator, details on page 12.

FAST

FAST (Febuxostat versus Allopurinol Streamlined Trial) is a

major multicentre clinical trial evaluating long term cardiovascular safety of febuxostat in comparison with allopurinol in patients with chronic symptomatic hyperuricaemia (gout). This is a very simple study, with a very low workload for participating practices.



So far, more than 100 practices in the West Midlands are taking part, and patient recruitment has commenced, with over 5,000 patients taking part nationally. Thank you so much to those of you who are on board, and we look forward to expanding this exciting trial to any other practices who may be interested.

Would your practice be interested in helping us with this important study?

Participating practices will receive a £500 fee for completing the database search, in addition to £5 per month per patient for the duration of the trial. All medication will be prescribed by the trial sponsor, and so there will be no prescribing costs to GP practices.

For further details, please contact your local research facilitator, details on page 12. More details can also be found on the trial website: www.fast-study.co.uk

The Role of GP Receptionists: A Research Study

Michael Burrows, Ian Litchfield, Nicola Gale and Sheila Greenfield



The roles of the GP receptionist are varied and essential to the smooth running of the practice. As well as undertaking administrative and clerical duties to ensure the various office systems continue to support the delivery of care, such as filing, maintaining medical records and making appointments, they

also undertake functions more directly related to patient health, such as booking appointments, communicating test results and managing repeat prescriptions. However the complexities of primary care are increasing and these responsibilities are placed on staff without formal training, whether in data protection and information governance or appropriate styles of communicating with patients. This gap between training and the implication of the role has clinical consequences for patients and medico-legal concerns for practices. Funded by the Health Foundation, this research aims to explore in greater detail the parameters of the roles of the GP receptionist in modern healthcare. It will explore the scope of their current activities and will ultimately identify areas that might benefit from targeted support. Further details can be found in our published protocol.

Getting involved

We are currently actively recruiting participants and would like to encourage receptionists across the West Midlands to complete our questionnaire. This will take only a few minutes to complete and includes questions about the nature of current responsibilities, and their interactions with colleagues and patients. The questionnaire can be accessed via the following link https://bham.onlinesurveys.ac.uk/gp_receptionist-survey_v1. The second phase of our work involves speaking with patients and a broader cross-section of staff to gather a range of perspectives on the role.

If your practice is interested in being involved in either phase or if you would like any further information about our work please contact Michael Burrows; Mjb538@bham.ac.uk or on 07528 528868.

Chronic Headache Education and Self-management Study (CHES)



A multi-centre, randomised controlled trial evaluating an education and self-management support programme for people

living with chronic headaches (headache \geq 15 days/month for \geq 3 months). The programme is led by Professor Martin Underwood at the Clinical Trials Unit, University of Warwick.

We plan to recruit around 700 people aged \geq 18 years living with chronic headaches from across the Midlands and North-east London.

What will it involve for participants?

All participants will be asked to:

- Provide written consent and complete postal questionnaires at baseline, 4, 8 and 12 months
- Complete an electronic diary of headache frequency, duration and severity (smartphone app or paper version) weekly for 6 months and monthly until the end of the study at 12 months
- Complete a telephone interview with a research nurse to classify their headache

If your practice is interested in taking part in the study or you would like any further information regarding CHES please contact your local research facilitator, details on page 12.

Participants will be randomised to either:

a. Usual GP care plus a group headache education and self-management support programme

Participants will attend a two day education and self-management course held at a venue close to their practice; followed by a one-to-one consultation and up to eight weeks of telephone support with a nurse

b. Usual GP care plus relaxation CD

Participants will receive standard treatment and sent a relaxation CD



What will it involve for GP Practices?

- Identification of potential participants from computer record search
- Checking of list before mail-out
- Mail-out of study invitation letters (via Docmail)
- Access to patient records for data collection of consultations, health service activity, and medication use related to headaches at 12 months

This project is funded by the National Institute for Health Research – Programme Grants for Applied Research (project number RP-PG-1212-20018). The views and opinions expressed therein are those of the authors and do not necessarily reflect those of the NIHR, NHS or Department of Health.

Funded by


National Institute for
Health Research

Annual Primary Care Research Meeting

The Clinical Research Network West Midlands (CRN WM) primary care team in the West Midlands North region held its Annual GP Research meeting at Rodbaston Hall, Penkridge, Staffordshire on 27th April 2017. The event was attended by over 100 GPs, practice nurses and practice managers from all over Shropshire, Wolverhampton and Staffordshire. This annual event is part of the primary care research incentive scheme for GP practices and is focused on giving the primary care team feedback on previous delivered studies and promoting the studies which will start recruiting in the year ahead.

Dr Stone opened the meeting with a presentation highlighting the outcomes of recently completed studies and the studies which will open in the year ahead. The programme had a number of guest speakers from Keele University.

Dr Jonathan Hill, Senior Lecturer in physiotherapy presented the pilot results of the STarT MSK Study. This is a study that has developed from the success of the Keele University STarT Back project.

The SWAP (Study of Work And Pain) team represented by Clinical Trials Fellow



Gwenllian Wynne-Jones, demonstrated the outcomes and benefits of a 'back to work' advice service for patient with MSK pain.

The final presentation from the Keele University Team was from Annette Bishop, Senior Research Fellow, who presented the results of a large pilot trial of direct access physiotherapy for patients with MSK pain. This study demonstrated that physiotherapy services are not overwhelmed by direct access and there was no increase in inappropriate referrals. Direct access to physiotherapy could be a pathway that may help develop further capacity in primary care.

There was also a presentation from the NIHR CRN WM dementia team highlighting dementia studies and Join Dementia Research (JDR) to the primary care audience. Join Dementia Research is a service which allows people to register their interest in participating in dementia research and be matched to suitable studies.

The research meeting also had a breakout sessions looking to encourage practices to take up commercial research and learn about the NIHR Research Ambassador programme. The Research Ambassador programme is about promoting health research from a patient's prospective. With primary care undergoing some significant changes in how care is delivered a break out session was delivered, mainly attended by GPs, looking at how the network can continue to adapt and support GP Practices continue to deliver research over the coming year. To support the nurses attending the meeting we also ran a session on how they could expand their role in research delivery.

Hopefully all the attendees found the sessions interesting and we will see you all next year.

Total bURDen Of psORiasis

GP practices in the North Midlands area (Staffordshire, Stoke, Shropshire and Wolverhampton) are invited to participate in the TUDOR study as a 'Patient Identification Centre'.

Inclusion Criteria for participants:

- Age 18-70 at time of recruitment
- Have a Read Code for psoriasis in primary care record at any time prior to date of recruitment
- Able to provide written informed consent
- Be willing to attend a clinical assessment by the research team at the Haywood Hospital

How will the practice be involved?

- Search to identify potentially eligible patients at the practice (using disease specific read codes)
- GP/s at the practice will be given the opportunity to screen the list of potentially eligible patents for any patients they believe are not appropriate to be contacted about the study
- Invitation letters via Docmail
- Interested patients will respond directly to the study team who will carry out the majority of the remaining study activity

Reimbursement will be available to cover the cost of research activity.

Royal United Hospitals Bath 
NHS Foundation Trust

If you would like more information, please contact your local research facilitator, details on page 12.



News from our Practices

ACHIEVEMENTS OVER AND ABOVE

Working With CRN

Norton Canes Health Centre
Thank you to all the staff for their friendly and helpful attitude, going above and beyond to ensure that everything is prepared and ready for the research nurse.

Promoting Research

Many thanks to the following practices that are always willing to help and participate in studies, always doing all they can to recruit well and assist CRN to meet their targets:

- Belgrave Medical Centre
- Biddulphdoctors at Biddulph Primary Care Centre
- Park Medical Centre
- Birches Head Medical Centre
- Orchard Surgery
- Baddeley Green Surgery

Thank You!

Sciatica Outcomes in Primary Care



SCOPiC Study closing to recruitment!

- This study has been running for 26 months and we are approaching recruitment closure
- We have recruited 463 participants, have nearly reached target of 470 and anticipate this will be achieved imminently
- We are very grateful for your support and valuable help with the study
- For practices using EMIS, a member of your Clinical Research Network will be visiting your practice to turn off the study pop-up template

Many thanks to the following West Midlands North practices for participating:

Total recruits as at May 2017		Total recruits as at May 2017	
Adderley Green	1	Five Towns	3
Baddeley Green	11	Goldenhill	10
Beeches	11	Haughmond	12
Birches Head	16	Haymarket	18
Brook MC	36	Higherland	5
Cambrian	9	Lucie Wedgewood	6
Cambridge House	1	Marysville	9
Caxton	27	Middleport	2
Claremont Bank	10	Millrise	7
Clive	9	Orchard	21
Dr McCarthy & Partners	17	Plas Ffynnon	22
Dr Miles	9	Prescott	6
Dr Pathak	6	Radbrook Green	8
Dr Sinha	2	Riverside	12
Dr Sonnathi	6	South Hermitage	15
Dunrobin	6	Trinity	2
Ellesmere	16	Worthen	1



Welcome to Sophie Hollinshead

My name is Sophie Hollinshead and I joined the CRN West Midlands primary care team based in Telford, as Assistant Research Facilitator in May. With an initial interest in marketing, I gained experience at Williams Formula One Team in Oxford and completed my Business Management and Marketing degree in 2014.

I began a career in digital marketing working at University of Wolverhampton but decided to make a switch to human resources within the university as HR Assistant until April.



As Assistant RF, I will be supporting the CRN primary care delivery team with the day to day management of NIHR portfolio studies and providing general support to RFs to help deliver studies. I look forward to assisting the coordination of patient stories as part of PPIE for CRN WM in the near future and using my digital skills to contribute to website and media work.

Outside of work I have a passion for sport being an avid cyclist riding for Wrekinsport Cycling Club, keen badminton player and motorsport fan, and enjoy spending time with friends and family. I am delighted to be working with CRN WM and am thoroughly enjoying my role within such a welcoming and friendly team.

Contact details: Study Team: [01782 734965](tel:01782734965) or email SSTPNT.SCOPIC@nhs.net or contact your local research facilitator, details on page 12.

A randomised controlled trial to encourage smokers to seek help to quit

A personalised invite can encourage more people to quit smoking through Stop Smoking Services

Smoking remains the leading cause of ill health and mortality, at an estimated cost to the NHS of about £6 billion. Stop Smoking Services (SSSs) in England offer intensive advice and support to smokers motivated to quit, and smokers attending have a higher chance of succeeding in a quit attempt than if they attempted to quit alone. However the proportion of smokers using the SSS has been less than 5%, and the number is falling each year. In the Start2quit trial we developed an intervention to persuade and motivate more smokers to seek, or accept, help to quit.

Smokers tend to underestimate their own personal risk. Therefore the intervention consisted of a personal risk information letter that told people about their own risk if they continue to smoke, using information from a screening questionnaire and from medical records. We combined this with an immediate offer of treatment and personal invitation to a no-commitment 'Come and Try it' taster session to find out more information about the service and what it involves. These sessions lasted approximately 1 hour were run by advisors, already trained to give smoking cessation advice, and also trained to lead sessions according to a standard protocol.

We assessed whether this intervention would encourage more people to attend the first session of an SSS course compared with a control group who received a standard generic letter advertising the local SSS. We also assessed whether this intervention would increase quit rates, defined as 7-day abstinence at the 6-month follow-up.

Complete data of attendance at the SSS was collected for each participant from SSSs at the end of the 6-month follow-up period, and submitted by



SSS staff using NHS monitoring data. Additional data were obtained by telephone interview or postal questionnaire 6-months after the date of randomisation for each participant.

The trial was conducted over 4 years, between January 2011 and December 2014. Eighteen SSSs and 99 practices within the SSS areas were recruited by the Primary Care Research Network (PCRN). All smokers aged 16 and over were identified from medical records in participating practices. After screening by GPs and eliminating duplicate addresses, 112,216 patients were invited to participate. Smokers returning the completed questionnaire and giving consent (4,384 / 4.1%) were allocated at random to the intervention group (2636) or to the control group (1748). A total of 3372 (76.9%) completed the interview or postal questionnaire at the 6-month follow-up (76.7% in the intervention group and 77.3% in the control group).

We attempted to select more practices in areas of high deprivation, determined by the practice postcode converted to an Index of Multiple Deprivation (IMD) score (the Government's official measure of multiple deprivation at small area level). Consequently 54.6% of practices were located in areas of higher deprivation (i.e. within the two highest quintiles of IMD scores). The practices list sizes ranged from 2,205 to 26,000, and the proportion of smokers identified in each practice ranged from 4.8% to 39.7%.

The average age of participants was 49, 51% were male, 51% were living in areas of high deprivation (IMD quintiles 4 and 5), and 32% were living in a household with another smoker. Participants smoked on average 16 cigarettes per day, 68% smoked within 30 minutes of waking. A high proportion (42.5%), were planning to quit sometime in the next 6 months, but not within the next 30 days.

Results

Significantly more people in the intervention group than in the control group attended at least one session of a 6-week SSS course (17.4% vs 9.0%), meaning that receiving a personal letter and invitation to a taster session, rather than receiving a standard letter, more than doubles the odds of attendance. We adjusted the results to account for other factors that might influence attendance, e.g. gender, age, and dependence, and the intervention group still had more than twice the odds of attending. The number of people who completed the 6-week course was also more than doubled in the intervention group (14.5% vs 7.0%).

In addition, significantly more people in the intervention group than in the control group had quit smoking (stopped for at least 7 days and validated by a saliva sample) at the 6-month follow-up (9.0% vs 5.6%), which means that the chances of quitting after receiving this letter and invitation are increased by 61%.

Of the 739 participants in the intervention group who attended a taster session, 338 went on to attend the SSS, and another 120 in the intervention group attended the SSS although they did not attend a taster session. Abstinence rates were highest at 28.7% in those who attended a taster session and also attended the SSS.

Comments from people who attended the tasters sessions suggested that the sessions gave new information and encouraged smokers to look at things in a different way. They were pleased that the advisors did not exert any pressure on the attendees to sign up, and the attendees felt relaxed ('very good. Without trying to 'preach' or exert undue pressure'), and comments also confirmed that some smokers are not aware of the service and what is offered, e.g. 'nice to know that such a service exists'.

Coventry SSS

The Coventry practices were representative compared of the total sample in terms of deprivation, and showed that we were successful in reaching our target population.

There were large differences in recruitment in SSSs, ranging from 2.3% to 6.7%.

Recruitment in Coventry was low overall, but largely due to two practices in particular. This reflected the pattern in other areas, where there were large variations between practices within SSSs. The characteristics of the Coventry sample were very similar to the total in all respects, although the proportion of males was higher at 58%.

Overall SSS attendance also varied between SSSs from 23.1% to as low as 2.1%, and validated 7-day abstinence from 13.4% down to 2.1%. SSS attendance in Coventry SSS was slightly lower than overall attendance, but completion of the course was high, and abstinence rates are comparable with the total. Our criteria for validation are rigorous, and therefore 7-day validated abstinence rates are conservative. Non-validation of 7-day abstinence does not confirm relapse or continued smoking in a participant.

Implications for healthcare

A programme of proactive recruitment can be effective in raising awareness of the SSS, and consequently increasing the service uptake. Personal risk information may prompt more smokers to attempt to quit and the taster sessions offer an opportunity to promote the services in the form of introductory sessions to emphasise their approachability and empathy.

A cost effectiveness analysis suggested that the tailored letter plus the taster session may be more costly during the trial period. However, quitting smoking yields huge health care cost savings and health benefits over the long-term through the reduced risk of smoking-related diseases, such as lung cancer, heart disease, COPD and stroke. The long-term results suggest that over a lifetime horizon, the intervention is more effective and less costly than the generic letter.

PRACTICE	IMD QUINTILE	LIST SIZE	% SMOKERS IDENTIFIED	TOTAL INVITATIONS SENT	NUMBER RECRUITED	RECRUITMENT RATE (%)
Holbrook Health	4	11500	14.96	1408	34	2.4
Westwood	2	5400	14.80	638	12	1.9
Jubilee Healthcare	4	8960	19.80	1284	37	2.9
Phoenix	3	5764	4.79	244	12	4.9
Springfield	4	7500	8.99	572	25	4.4
Jubilee Health Centre	5	8298	16.69	912	18	2.0
Total		47422	13.3	5395	138	2.7

	START2QUIT SAMPLE		COVENTRY SSS SAMPLE	
	INTERVENTION N=2635	CONTROL N=1748	INTERVENTION N=85	CONTROL N=53
Attended taster session	739 (28%)		17(20.0%)	
Attended SSS	458 (17.4%)	158 (9.0%)	12(14.1%)	4(7.5%)
Completed 6-week SSS course	382 (14.5%)	123 (7.0%)	11(12.9%)	1(1.9%)
Validated 7-day point-prevalent abstinence	236 (9.0%)	97 (5.6%)	7(8.2%)	4(7.5%)
Validated prolonged 3-month abstinence	150 (5.7)	60 (3.4)	4(4.7%)	2(3.8%)
Self-reported 7-day point-prevalent abstinence	424 (16.1)	187 (10.7)	14(16.5%)	4(7.5%)

Funding: National Institute for Health Research HTA Programme

Publications: Gilbert H, Sutton S, Morris R, Petersen I, Galton S, Wu Q, et al. Effectiveness of personalised risk information and taster sessions to increase the uptake of smoking cessation services (Start2quit): a randomised controlled trial. *The Lancet*, 2017;389(10071): 823–833. [http://dx.doi.org/10.1016/S0140-6736\(16\)32379-0](http://dx.doi.org/10.1016/S0140-6736(16)32379-0)

Gilbert H, Sutton S, Morris R, Petersen I, Wu Q, Parrott S, et al. Start2quit: a randomised clinical controlled trial to evaluate the effectiveness and cost-effectiveness of using personal tailored risk information and taster sessions to increase the uptake of the NHS Stop Smoking Services. *Health Technol Assess* 2017;21(3) <https://dx.doi.org/10.3310/hta21030>

HOW CAN WE BEST HELP PEOPLE TO LOSE WEIGHT IN PRIMARY CARE?



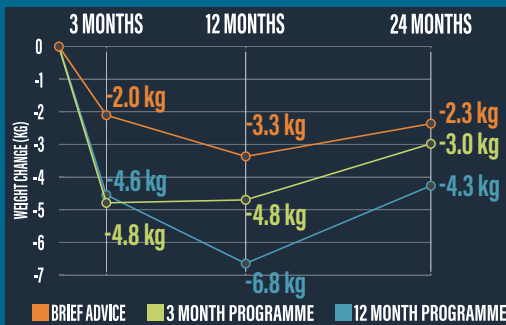
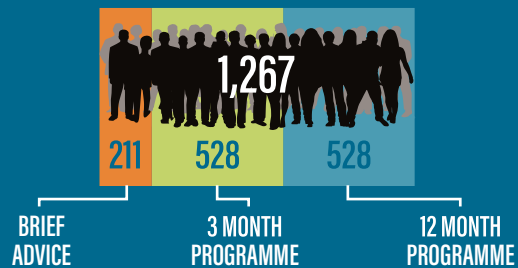
The WRAP study – Weight loss Referrals for Adults in Primary Care – examined if a behavioural weight loss programme, in this case WeightWatchers®, is better than brief advice, and how long a programme should last – 3 or 12 months?

It compared the costs and potential future health benefits of these programmes.

THE STUDY

1,267 participants were randomly assigned to receive either brief advice, or a referral to a weight loss programme for either 3 or 12 months.

Their weight was measured at 3, 12 and 24 months.



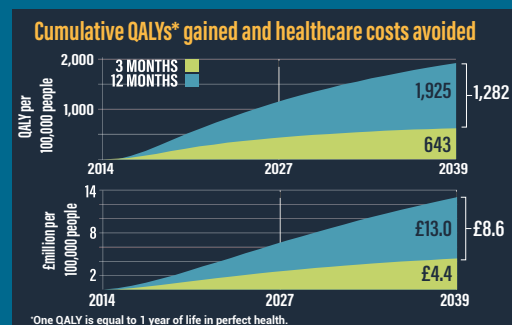
HOW MUCH WEIGHT DID PEOPLE LOSE?

GP referral to a weight loss programme led to significantly more weight loss than brief advice.

The longer programme led to greater weight loss at 12 and 24 months.

WHAT IS THE EFFECT ON FUTURE HEALTH?

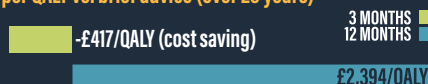
We assumed people regained all the weight they lost by year 5. Despite this, modelling suggests the weight loss programmes lead to greater health benefits and lower NHS costs over the next 25 years compared to brief advice. The longer programme is predicted to have much greater benefits.



Cost per kg weight lost vs. brief advice



Cost per QALY vs. brief advice (over 25 years)



ARE LONGER PROGRAMMES COST-EFFECTIVE?

The health economic analysis shows that a 3 month programme is likely to be cost saving relative to brief advice alone.

The 12 month programme is more expensive, but the greater health benefits mean it is very cost-effective by usual clinical standards*.

*NICE threshold for cost-effectiveness of £20,000/QALY

Royal College of General Practitioners and Clinic Research Network Awards: to recognise NHS general practices and First5® GPs who are active in research

Introduction

Since its inception in 2006, the NIHR has significantly increased the scale of clinical research in the NHS, particularly through the Clinical Research Network. The enthusiastic engagement of NHS clinicians is an essential condition for sustaining and building on this success, particularly given the many competing demands on clinician time and resources.

These awards are for members of the Royal College of General Practitioners (RCGP) and recognise outstanding contributions and innovations of NHS general practices and First5® GPs to the conduct of NIHR Clinical Research Network Portfolio studies in a primary care setting.

Eligibility

General practice applications must be submitted in the name of a current Fellow or Member of the RCGP and general practices must be contributing to NIHR Clinical Research Network Portfolio studies (but not exclusively).

First5® GPs must be a First5® member and have contributed to NIHR Clinical Research Network Portfolio studies in a general practice/primary care setting.

Further information including eligibility criteria is available on the NIHR website <http://bit.ly/RCGPCRNawards>



“The standard of applications was exceptionally high. The award winners are making an outstanding contribution to clinical research within primary care.”

Dr Imran Rafi *Chair, RCGP Clinical Innovation and Research Centre*

Applications

Applicants are required to outline their contribution to NIHR Clinical Research Network Portfolio studies with particular weight being attached to:

- the range and number of clinical research studies on the Portfolio
- how they engaged with patients to inform them of new opportunities to participate in clinical research studies
- their contribution and innovative methods used in the successful delivery of clinical research studies

Applicants should set out how they would use the prize money to increase their contribution to NIHR Clinical Research Network Portfolio studies in future. This may be in the form of support for a personal development plan.

The closing date for entries is 12 noon on 25 August 2017.

Interested in becoming a GP Registrar and First5® GP Research Champion?

As part of a national initiative, we are seeking to employ early career GPs for up to eight hours/month to link with the CRN primary care teams based at Birmingham, Keele and Warwick universities. This offers a great opportunity to share your enthusiasm for primary care research with GP registrars and First5® GPs in your area. Each champion will work with members of the CRN team to raise registrars' and First5 GPs' awareness of opportunities to participate in primary care research (especially research delivery in day-to-day practice), and of applying to schemes such as the Academic Clinical Fellowships, post-CCT academic fellowships and In Practice Fellowships.



For further information, please contact Michaela Handley, email michaela.handley@nihr.ac.uk phone 01902 447198

Local Contacts

For more information about any study, or further information about anything else in Participate, please contact your local research facilitator



West Midlands Central

Birmingham and the Black Country

Senior Research Facilitator	Sarah Campbell	sarah.campbell@nhr.ac.uk	0121 414 3168
Research Facilitator	Sheila Bailey	sheila.bailey@nhr.ac.uk	0121 414 7956
Research Facilitator	Tina Sexty	christina.sexy@nhr.ac.uk	0121 415 8730
Research Facilitator	Beth Hinks	elizabeth.hinks@nhr.ac.uk	0121 414 8545
Research Facilitator	Sarah Hinton	sarah.hinton@nhr.ac.uk	0121 414 8593
Research Facilitator	Lucy Hughes	lucy.hughes@nhr.ac.uk	0121 415 8740
Research Facilitator	Marie Crook	marie.crook@nhr.ac.uk	0121 414 6270
Research Facilitator	Anu Krishna	anuradha.krishna@nhr.ac.uk	0121 414 6643
Research Facilitator	Saif Uddin	saif.uddin@nhr.ac.uk	0121 414 8614
Research Facilitator - Finance	Hilary Percival	hilary.percival@nhr.ac.uk	0121 414 8537

West Midlands North

Staffordshire, Stoke and Telford

Senior Research Facilitator	Jessica Graysmark	jessica.graysmark@nhr.ac.uk	01952 255062
Research Facilitator	Jenny Titley	jenny.titley@nhr.ac.uk	01782 734730
Research Facilitator	Mark Evans	mark.evans@nhr.ac.uk	01782 733923
Research Facilitator	Natalie Burgess	natalie.burgess@nhr.ac.uk	01782 734964
Research Facilitator	Sam Hunt	samantha.hunt@nhr.ac.uk	01782 734892
Research Facilitator	Jenny Simm	jenny.simm@nhr.ac.uk	01952 255062
Research Facilitator	Lucy Andrew	lucy.andrew@nhr.ac.uk	01952 255062
Research Facilitator	Gerri Mulcahy	gerri.mulcahy@nhr.ac.uk	01952 33963
Research Facilitator	Charlotte Thorley	charlotte.thornley@nhr.ac.uk	01952 255062
Research Facilitator Assistant	Sophie Hollinshead	sophie.hollinshead@nhr.ac.uk	01952 255062

West Midlands South

Coventry, Herefordshire, Warwickshire and Worcestershire

Research Facilitator	Sue Wright	s.wright.3@warwick.ac.uk	02476 575919
Research Facilitator (special projects and Herefordshire)	Jenny Lee	jennifer.lee@warwick.ac.uk	07920 531 364
Research Facilitator	Becky Harrison	r.l.harrison@warwick.ac.uk	02476 575853
Research Facilitator	Aman Johal	amanpreet.johal@warwick.ac.uk	02476 574127

Meet your West Midlands CRN Patient & Public Involvement and Engagement (PPIE) Team

Local patient and public involvement teams are coming together in primary care to share ideas about improving research awareness and implementing new initiatives recommended by the NIHR, to improve access to clinical research.

PPI should form the cornerstone of all clinical research and our local teams are working hard to enhance its role within primary care and shape future developments. To find out who your local CRN primary care team is, please see our list of contacts.

CRN West Midlands PPIE Team

Julie Davis julie.davies@nhr.ac.uk
Head of Business Delivery Services, Workforce Development, Patient & Public Involvement & Portfolio Management

Mary-Anne Darby mary-anne.darby@nhr.ac.uk
Head of Patient and Public Involvement and Engagement in Research

Mohammed Shaikh mohammed.shaikh@nhr.ac.uk
Patient and Public Involvement and Engagement Cross Theme Lead

Carly Greene carly.greene@nhr.ac.uk
Patient and Public Involvement and Engagement Officer

Claire Callens claire.callens@nhr.ac.uk
Patient and Public Involvement and Engagement Officer

Jacqueline Smart jacqueline.smart@nhr.ac.uk
Patient and Public Involvement and Engagement Officer

Jess Graysmark jessica.graysmark@nhr.ac.uk
Patient and Public Involvement and Engagement Officer

CRN West Midlands Primary Care PPIE Team

West Midlands North

Alice Mackie alice.mackie@nhr.ac.uk
Patient and Public Involvement and Engagement Lead

Jan Wilson jan.wilson@nhr.ac.uk
Patient and Public Involvement and Engagement

Sophie Hollinshead sophie.hollinshead@nhr.ac.uk
Patient and Public Involvement and Engagement

West Midlands Central

Sarah Hinton sarah.hinton@nhr.ac.uk
Patient and Public Involvement and Engagement Leads

West Midlands South

Aman Johal aman.johal@nhr.ac.uk
Patient and Public Involvement and Engagement Lead

Eleanor Hoverd eleanor.hoverd@nhr.ac.uk
Patient and Public Involvement and Engagement

Claire Talbot claire.talbot@nhr.ac.uk
Patient and Public Involvement and Engagement