

APPENDIX C

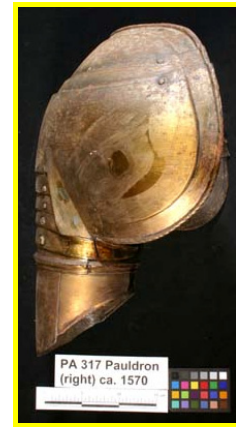
**TEN PALACE ARMOURY ARMOUR AVAILABLE FOR
LABORATORY STUDY**



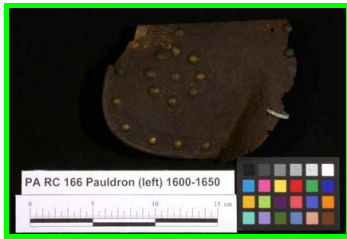
PA 329 Backplate



PA 316 Pauldron



PA 317 Pauldron



PA RC 166 Pauldron (part)



PA RC 165 Pauldron (part)



PA RC 29 Tasset



PA RC 25 Gorget



PA RC 20 Cannon



PA RC 88 Full arm



PA RC 80 Tasset

Amour outlined in red were not selected for further surface study, amour outlined in yellow were selected for surface study only and amour outlined in green were selected for surface and cross-section studies¹

Reference:

Vella, D., Degrigny, C., Golfomitsou, S., and Crawford, J. (2005a). Documentation and analysis of a selection of artefacts from metal collections of the Mediterranean Basin: D3-1: Definition of metal compositions representative of the collections WP3/TASK 3.1/D3-1/April 2005. European Commission Promet project. Bighi, Malta, Diagnostic Science Laboratories, Malta Centre for Restoration – internal document.

¹ Images: (Crawford in) Vella et al., 2005a, pp. 8-11