

**UNITY OR DIVERSITY?  
MARKET INTEGRATION AND LONG-RUN ECONOMIC  
GROWTH IN INDONESIA**

By Daan Marks

[dma@iisg.nl](mailto:dma@iisg.nl)

International Institute of Social History (IISH)

Amsterdam, the Netherlands

[DRAFT; PLEASE DO NOT QUOTE OF CITE]

Paper prepared for Harvard-Hitotsubashi-Warwick Conference “Economic Change Around the Indian Ocean in the Very Long Run”

The University of Warwick in Venice, Palazzo Pesaro Papafava

22-24 July 2008

## 1. INTRODUCTION

The motto of Indonesia is *Bhinneka Tunggal Ika*, which is Old Javanese and is often loosely translated as 'Unity in Diversity'. Literally it means '(Although) in pieces, yet One'. Whether this slogan can be applied to Indonesia's economy is debatable. It is clear that in Indonesia the emergence of an integrated national economy has been a slow and ongoing evolutionary process. Dick et al. (2002: 10) argue that the structure of a national economy came only into being during the presidency of Suharto.<sup>1</sup> They base this finding mainly on the fact that interisland trade has risen significantly since the late 1960s (Dick et al. 2002: 24-32). But an increase in interisland trade is only suggestive evidence of the creation of a 'national economy'. This paper aims to give a more satisfactory answer to this question by assessing the process of market integration in Indonesia during the twentieth century using rice price series for a number of cities across the archipelago.

The choice for rice prices is not only inspired by the fact that these series are relatively abundant, but also by the fact that rice plays a crucial role in the Indonesian economy. Rice production accounted for about 50 per cent of total value added in agriculture throughout the twentieth century (Van der Eng 1993, Table A.1.2). And despite the fact that agriculture as a percentage of total GDP has been declining steadily, especially since the 1970s, almost 10 per cent of GDP is still earned in rice production nowadays.

But not only as a source of income does rice play a significant role in the Indonesian economy. Also on the consumption side is rice the most important product. In 2001 on average 14 per cent of a family's budget was spent on rice, varying from close to 30 per cent for the poor and only 2.5 per cent for the very rich (BPS, *Statistical Yearbook 2001*). Since Engel's Law seems to hold for rice consumption, in earlier stages of development rice was probably even a more important expenditure item than it is nowadays.

Considering the importance of rice in the Indonesian economy, it can be argued that a well-functioning rice market is a precondition for economic development. This is in line with the neo-institutional approach developed by Douglass North (1981, 1990). According to this school of economists, well-protected property rights and low transaction costs are

---

<sup>1</sup> In 1966 Suharto took effective power of the government in Indonesia. The term used for his regime is New Order (*Orde Baru* in Indonesian).

necessary for efficient markets, which in turn make processes of commercialization and specialization possible.

Van Zanden (2004) already showed that institutional failures resulted in extremely fluctuating rice prices in Java during the first half of the nineteenth century. In combination with poor integration of the rice market this meant that peasants had weak incentives to increase market production. This is arguably one of the reasons behind the slow economic development of Java during the nineteenth century.

Twentieth-century Indonesia forms an excellent laboratory to further analyze the relation between efficient markets, market integration and economic growth. Data on rice prices are relatively abundant. Moreover economic development in Indonesia during the twentieth century can be characterized as erratic. Periods of growth were followed by recessions and vice versa. Taking a long-term perspective enables us to draw conclusions about the role that efficient markets have played in the economic development of Indonesia.

Studies empirically testing market efficiency and market integration in Indonesia are scarce. Several descriptive studies evaluating rice market performance are available (Timmer 1974; World Bank 1987; Food and Agriculture Organization 1991; Pearson et al. 1991; Tabor 1992). Prior to the Green Revolution Mears (1961) conducted a study and concluded that rice markets in Indonesia did not function efficiently. Squires and Tabor (1987) econometrically tested for rice market integration in Java using Granger (1981) causality tests, finding the Javanese rice market to be integrated. Alexander and Wyeth (1994) introduced cointegration tests to study rice market integration in Indonesia between 1979 and 1990. They concluded that markets were integrated during this period. Ismet et al. (1998) tested for market integration for the period 1982-1993 and found that relative to the pre-self-sufficiency period (1982-1984), the post-self-sufficiency period (1985-1993) had a smaller degree of market integration.

The aim of this paper is to add to the current debate in an important aspect. Whereas prior studies only cover short periods, this paper analyzes the functioning of the rice market in Indonesia from a *long-term perspective*. Looking at both price stability and market integration under the different regimes (i.e. colonial administration, Soekarno, Suharto, and post-Suharto) and relating this to economic growth will hopefully enhance our understanding of Indonesia's long-term economic development.

The remainder of the paper will be organized as follows. Section 2 deals with the relation between stable food prices, market integration and economic development. In section 3 intertemporal price variations in Indonesia's rice market are discussed. In section 4 we shift attention to spatial market integration. Section 5 concludes.

## **2. STABLE FOOD PRICES, MARKET INTEGRATION AND ECONOMIC DEVELOPMENT**

The positive relation between market integration and economic development is widely accepted in economics. The neo-classical argument is that expansion and integration of markets lead to improvements in productivity through the spreading of fixed costs, economies of scale and an increasing division of labour. But there is another argument why better integrated markets enhance economic development, namely through price stabilization.

Timmer (1996) states that 'where food prices have not been stabilized successfully and food security remains questionable, political stability and economic growth has been threatened (1996: 46).'<sup>2</sup> Timmer (1989a, 1996) discusses a number of reasons why price stabilization is economically beneficial (see also Dawe 1997).

Firstly, unstable prices result in displaced investments in physical capital. Price instability means that investments become riskier. This leads to lower investments than would be optimal for the society as a whole. For example, society would benefit from investments in irrigation because it will enhance technological development. With unexpectedly fluctuating prices, such an investment is too risky for an individual farmer, because whether he will profit from it depends on the (uncertain) future price.

Secondly, price instability leads to substitution of savings and work for consumption and leisure. Of course this increases the welfare of the farm family, but the shift in allocation of time and resources is not optimal for economic growth.

---

<sup>2</sup> For this finding Timmer refers to an article by Pinckney (1993). This statement, however, is not explicitly made in the original article by Pinckney.

Thirdly, unstable prices cause transaction costs for consumers in reallocating their budgets when prices change. Compared to rich consumers, poor consumers are likely to value this aspect more. For example, if a food crop constitutes 20-30 per cent of a consumer's expenditure, then a doubling of prices may require a reallocation of a quarter of total expenditure.

A fourth reason why unstable food prices can influence economic growth is the inter-linkage with macroeconomic factors. For example, at the beginning of the modern economic growth process in Indonesia in the mid 1960s, rice accounted for one-quarter of GDP and one-third of employment. In such an economy instability in rice prices causes macroeconomic instability which in turn lowers economic growth.<sup>3</sup>

Fifthly, price instability affects the industrial sector. Stability of money wages can only be achieved if food prices are stable. When this is the case, it is likely to induce investments in labour-intensive machinery, improving the efficiency of technology choice in low-wage economies. Besides, if stable food prices contribute to a stable political environment in which investors can form secure long-run expectations, the overall level of investment is likely to be stimulated.

The above factors lead Timmer to conclude that 'Food security and economic growth interact with each other in a mutually reinforcing process over the course of development' (Timmer 2004: 2).

An instrument to reach this goal of stable food prices is market integration. Given the price inelasticity of demand for rice, deviations from a normal price normally reflect uncontrollable supply shocks (Persson 1999: 7-8). An integrated market can mitigate the effect of such price shocks because it induces trade between surplus and deficit areas.<sup>4</sup> If a market is integrated and a harvest failure drives up prices in market A, arbitrage opportunities arise. Traders from other markets will be attracted by the high prices in market A and start selling their goods there. This will lower prices in market A and increase prices in the other markets until an equilibrium. In other words, there is a 'spatial cancelling

---

<sup>3</sup> For the relation between macroeconomic instability and economic growth see for example Dawe (1996), Barro and Sala-i-Martin (1995)

<sup>4</sup> For examples of studies where lack of market integration resulted in famines see Sen 1981; Ravallion 1987; Von Braun, Teklu and Webb 1999.

out of harvest disturbances' (Persson 1999: 9). Nevertheless, even if markets are integrated market disturbances can severely disrupt an economy for example by causing a famine (Ó Gráda 1999, 2001; Ó Gráda and Chevet 2002).

In conclusion, on the one hand expansion and integration of markets lead to improvements in productivity through economies of scale, the spreading of fixed costs and an increasing division of labour. On the other hand market integration can have a positive effect on economic growth because it enhances price stabilization. Now we turn our attention to the question how prices in the rice market have evolved over time in Indonesia.

### **3. INTERTEMPORAL RICE PRICE STABILIZATION IN INDONESIA: GOVERNMENT INTERVENTION**

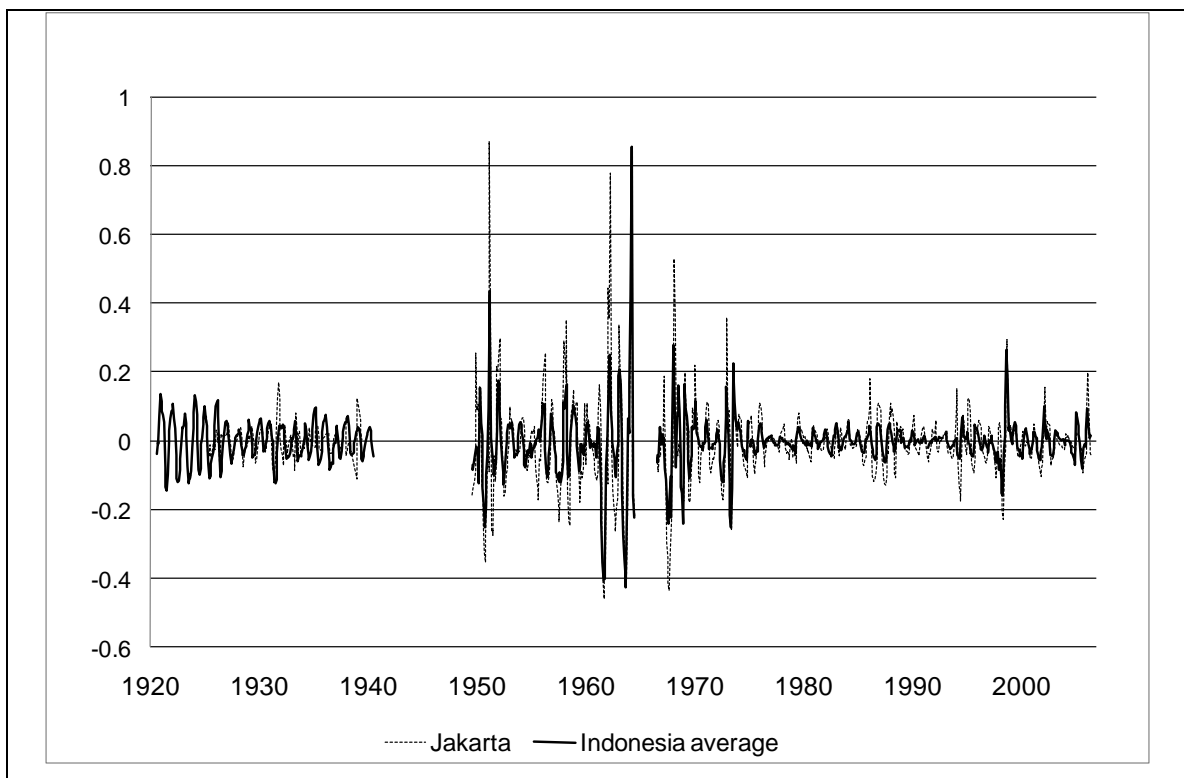
Figure 1 shows the monthly fluctuations in rice prices in Indonesia between 1920 and 2006. Due to data availability the period 1920-1940 only covers Java. It is based on the average price of rice on 120 native markets. From 1949 onwards prices refer to Indonesia as a whole. It is likely that the choice for an average price masks fluctuations in individual markets. If a farmer only has access to one or two markets the average price fluctuation will underestimate the true risk faced by a farmer. This is confirmed by the dashed line which represents the Jakarta market for rice. However, although fluctuations in the Jakarta market alone are higher, the trend is the same.

From figure 1 we can conclude that price stability of rice has been rather erratic during the twentieth century. It is striking to see fluctuation of only  $\pm 10$  per cent in the 1920s even decreasing further in the 1930s. Van der Eng (1993) attributes this to increasing rice imports during the dry season. Moreover he concludes that these rather low fluctuations suggest that the distribution system in colonial Java was well enough developed to guarantee a stable spread of the supply of the marketed rice over the entire island (Van der Eng 1993: 172).

However, this price stabilization did not come as a 'manna from heaven'. Intervention by the colonial government significantly contributed to price stability. Already in 1911 the

government intervened in the rice market in reaction to extreme shortages. Ever since, rice price stabilization has been high on the economic policy agenda (Creutzberg 1974: 171).

**Figure 1: Rice Price Fluctuations, 1920-2006**



*Note:* fluctuations are expressed as monthly deviations from a 13-month moving average. The period 1920-1940 refers to Java only.

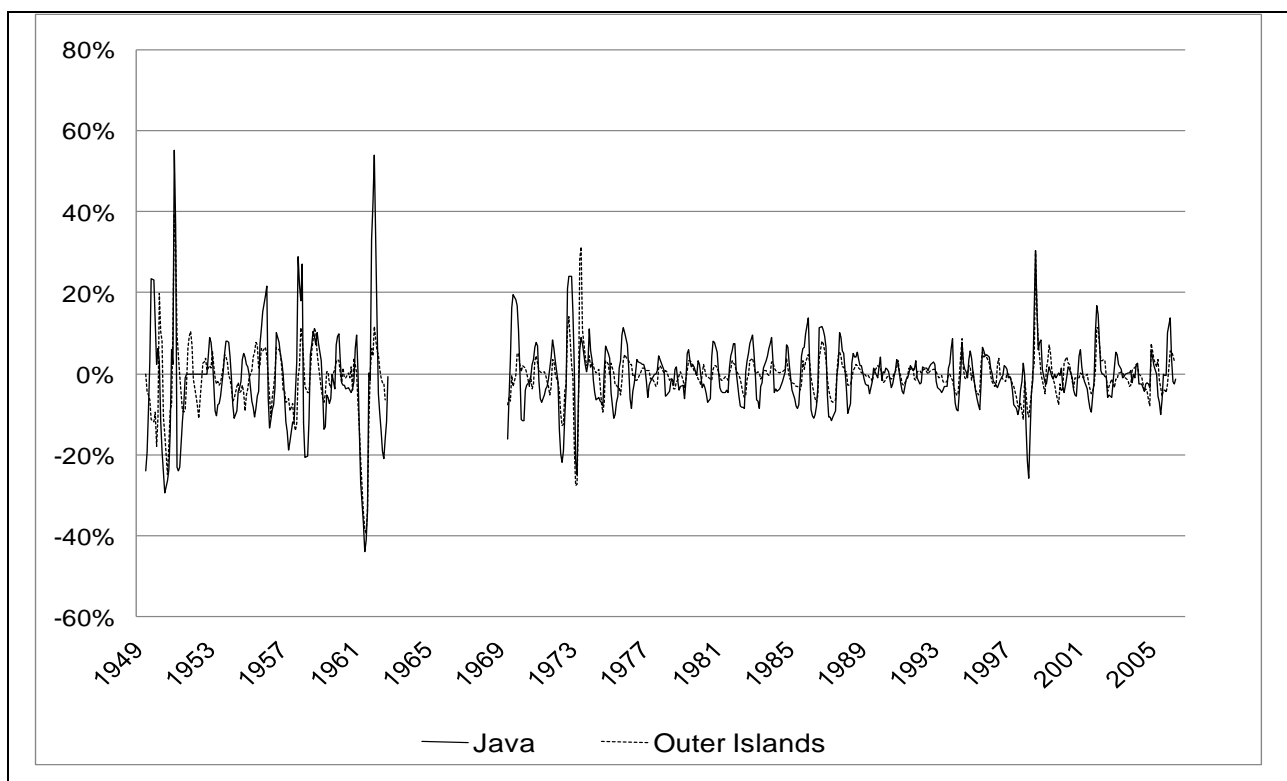
*Sources:* 1923-1939: *Prijzen, indexcijfers en wisselkoersen op Java, 1913-1937; Statistisch Jaaroverzicht; Korte Berichten voor landbouw, nijverheid en handel* (Appendix: *Maandstatistieken van het Centraal Kantoor voor de Statistiek. Prijzen en indexcijfers in NI*); 1949-1956: Mears (1961); 1957-1968: *Warta BPS*; 1969-1984: *Statistik Bulog*; 1985-2000: *Laporan Mingguan Bank Indonesia*; 2000-2006: *Statistik Ekonomi Moneter Indonesia*.

The government not only indirectly intervened through trade restrictions and tax policy, it also intervened directly by purchasing rice in surplus areas, in order to avoid rice hoarding for speculation and guarantee the supply of rice at affordable prices in deficit areas (Van der Eng 1993: 167; Creutzberg 1974: 119-120). The purchased paddy was subsequently sold to

government institutions, such as the army, navy, police, prisons, hospitals and government enterprises and to large private companies in the Outer Islands.

In 1939 the government even founded the semi-private Food Supply Board (*Voedingsmiddelenfonds, VMF*), which had to coordinate the stabilization of rice prices. VMF had a monopoly on rice imports and through licences it controlled the inter-island shipments of rice.

**Figure 2: Price fluctuations, Java vs Outer Islands, 1949-2006**



Note: Deviation from 13-month moving average

Sources: as for figure 1

During the 1950s and 1960s price fluctuations were much higher. One could suggest that this is just a statistical reality due to the inclusion of markets in the Outer Islands. However, as can be seen in figure 2 this is not the case. The difference in monthly deviations from a 13-month centered moving average between Java on the one hand and the Outer Islands on



the other hand is negligible. And the small difference that appears suggests that prices on Java fluctuate more than in the Outer Islands.

Apparently the successors of the VMF did not succeed in stabilizing rice prices. This can be attributed to both inefficient organization and inefficient policy goals. After independence food logistics management was in the hands of two different institutions. On the one hand rice marketing was the responsibility of the *Yayasan Bahan Makanan* (YUBM). On the other hand, paddy purchasing activities were done under the authority of the *Yayasan Badan Pembelian Padi* (YPBB). Only under Presidential Decree No. 3/1964 YUBM and YBPP were merged into *Badan Pelaksanan Urusan Pangan* (BPUP) with the objective to manage, transport, process, store and distribute food commodities.

Besides these inefficient organizational structures, the policy goal of the different agencies was no longer to 'steer' the rice market, but rather to control the production of milled rice. Rice mills were obliged to work only for the food logistic agencies and unauthorized trade of large quantities of rice was forbidden (Van der Eng 1993: 170). But the inability of the agencies to meet purchase targets led to shortages in milled rice which were required to stabilize prices. According to Van der Eng this failure of fulfilling purchase targets was partly caused by logistic difficulties of transport and distribution (Van der Eng 1993: 170). The Japanese occupation and the subsequent Indonesian struggle for independence had done great damage to the physical infrastructure. Rehabilitation and extension of the infrastructure only really took place from the late 1960s onwards. Moreover, unlicensed private trade of large quantities of rice was forbidden. While the food logistic agencies were supposed to intervene in the rice market, they mainly did so for distribution to civil servants and military rather than for actual price control (Van der Eng 1993: 172-173).

Entering the era of the New Order controlling rice operations was carried out by *Komando Logistik Nasional* (Kolognas). On May 10, 1967 Kolognas was dismissed and replaced by *Badan Urusan Logistik* (Bulog). Initially the mission of Bulog was to function as a buffer stockholder and a rice supplier to government employees. Only from November 1978 onwards Bulog's main task was broadened to include controlling and stabilizing the price of rice, paddy, wheat and other staple foods both at producer and consumer levels. So almost forty years later the intervention in the rice market was brought back to how it was during the colonial period. This is clearly visible in figure 1, where we see that after 1974 rice prices

stabilize with fluctuations comparable to those in the 1930s.<sup>5</sup> Since intervention by Bulog in the rice market was only limited in this period, Van der Eng attributes this decline in fluctuations to the rehabilitation of communications and the liberalization of domestic rice trade (Van der Eng 1993: 174).

The beginning of the 21<sup>st</sup> century is characterized by larger fluctuations in rice prices. This is partly due to the aftermath of the Asian crisis. Furthermore Bulog was reorganized into a public corporation. As a result of ongoing studies into the functioning of Bulog and under pressure of the IMF, measures were taken to reform Bulog. Consequently its role of supplying rice to civil officials was ended by law and its role as an agency that stabilized producer and consumer prices was reduced to that of overseeing the floor price for dried paddy. In this respect, Yonekura (2005: 133) lists 4 explicit reforms that were undertaken:

- a) Limiting Bulog's activities and duties financed by government funds.
- b) Seeking to minimize protection for farmers and minimizing Bulog's financial burden. This has been attained by ending year-round domestic procuring and concentrating it in the harvest seasons. Moreover, procurement prices should be set near CIF-plus-tariff prices.
- c) Deregulation and reinforcing market transactions. This means liberalizing rice imports by allowing private importers to trade in rice. Besides, Bulog should import rice on a competitive basis, and its special advantages, support, rights and prerogatives have been abandoned.
- d) Improving governance.

In short, the reforms meant a more important role for market forces and a limitation of Bulog's monopoly in the import sector. This resulted in somewhat higher fluctuations in the rice prices (McCulloch and Timmer 2008).

---

<sup>5</sup> The fluctuations in 1973-74 were caused by a world food crisis. The shortage of rice in world markets made it impossible for Indonesia, despite abundant foreign exchange from oil revenues, to purchase enough rice to maintain internal price stability (Timmer 1989b: 24).

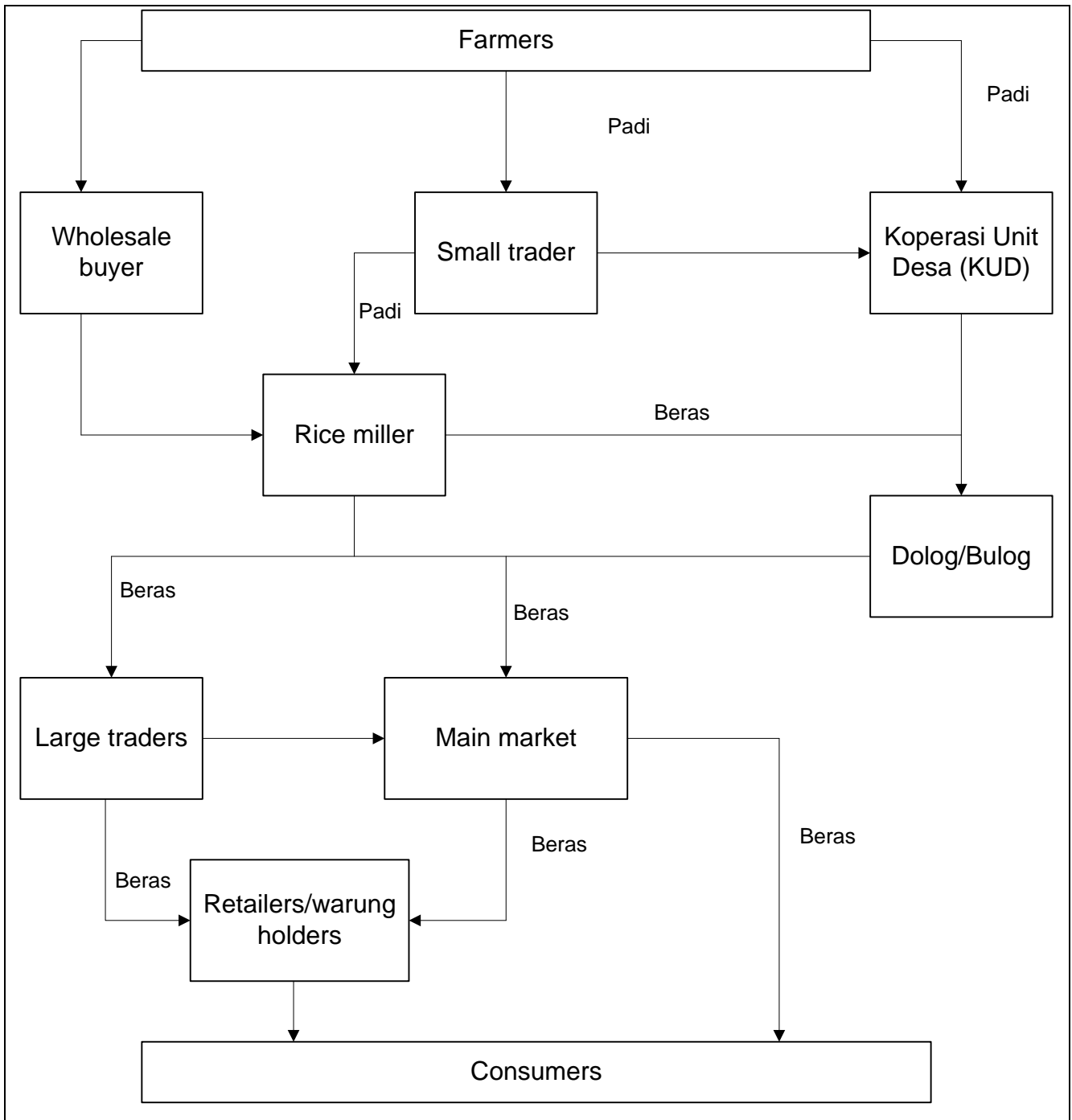
Because of the high costs of national price stabilization schemes many economists are sceptic whether food price stability is financially feasible (Newbery and Stiglitz 1979, 1981; Behrman 1984; Williams and Wright 1991). Anderson and Roumasset even state:

‘Government efforts to nationalize grain markets and to regulate prices across both space and time have the effect of eliminating the private marketing and storage sector. Rather than replacing private marketing, government efforts should be aimed at enhancing private markets through improving transportation, enforcing standards and measures in grain transactions, and implementing small-scale storage technology.’ (Anderson and Raoumasset 1996: 62)

However, for the case of Indonesia Timmer rejects this condemnation. He argues that in Indonesia the stabilization of domestic rice prices was made possible by an expanding role for the private marketing sector (Timmer 2004: 5). Figure 3, which represents the marketing structure of rice in Indonesia, and figure 4, which illustrates the functioning of Bulog, supports this. It shows that Bulog does not replace the private traders, but through setting floor and ceiling prices dictates the ‘rules’ or the boundaries within which private traders operate (see figure 4). Of the marketed crop Bulog procures only quite a small proportion, i.e. 3-5 per cent during the 1970s, 8-9 per cent during the 1980s and 4-5 per cent between 1990 and 1997 (Piggot et al. 1993: 90; Saifullah 2001: 98). This means that the private market is responsible for moving the bulk of the marketed crop. Spatially integrated rice markets can only be achieved if private traders react to arbitrage opportunities and transportation is not a major obstacle. Or to quote Timmer:

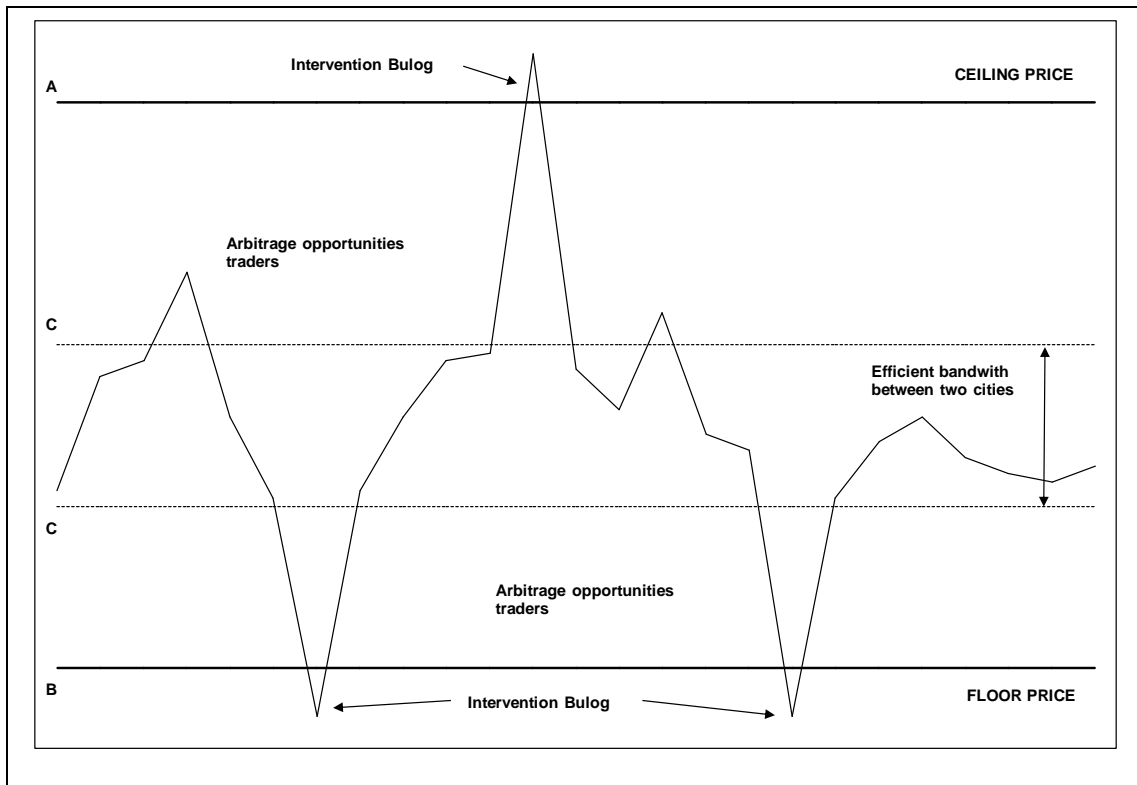
‘Nearly all price interventions have been attempted through use of the market rather than displacement of it, and this no doubt accounts for much of the success in defending the desired price levels. As a consequence, the private food marketing sector has had a relatively large role, and the structure, conduct, and performance of this sector is a crucial factor in the design and implementation of price policy in Indonesia.’ (Timmer 1989b: 39)

Figure 3: Marketing structure of rice



Source: Natawidjaja 2001: 75

**Figure 4: Functioning of Bulog**



## 4. SPATIAL PRICE DIFFERENCES IN INDONESIA

### 4.1 A SIMPLE APPROACH

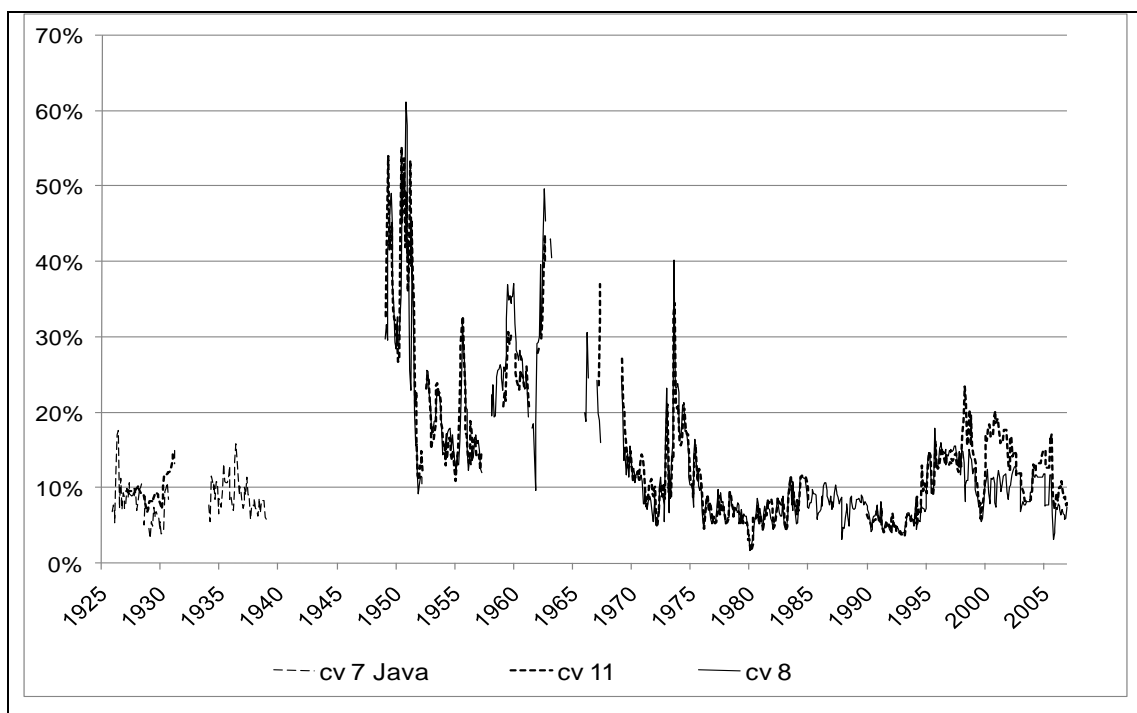
An important contributor to stable prices can be an integrated market. A harvest failure in market A would in case of autarky cause an extreme supply shock and a sharp increase in price. If markets are spatially integrated, however, this effect will be mitigated by an influx of rice from market B. But spatially integrated markets also enhance productivity growth because of economies of scale and division of labour. It is therefore informative to investigate how prices fluctuate between markets.

In figure 5 price fluctuations between markets are illustrated by the so-called coefficient of variation (CV). This coefficient is obtained by dividing the standard deviation of the different markets by the mean of these markets. The rationale behind this variable is that in perfectly integrated markets the Law of One Price holds. Thus, in this case the price of rice

would be the same in all markets resulting in a standard deviation of 0. In figure 5 a CV is computed for 11 cities (Jakarta, Bandung, Semarang, Surabaya, Palembang, Padang, Medan, Pontianak, Makassar, Manado, and Banjarmasin).

To avoid a bias in the results a mean and standard deviation were only calculated if there were observations for all cities. Since for Padang, Manado and Banjarmasin relatively many observations are missing, we also calculate a CV for 8 cities only (thus excluding Padang, Manado and Banjarmasin). As can be seen this does not significantly change the results.

**Figure 6.5: Fluctuations between markets, 1925-2006**



*Note:* Fluctuations measured by coefficients of variation.

cv 7 Java: Weltevreden (Jakarta), Bandung, Semarang, Surabaya, Yogyakarta, Surakarta (Solo) and Malang.

cv 8: Jakarta, Bandung, Semarang, Surabaya, Palembang, Medan, Pontianak, and Makassar.

cv 11: Jakarta, Bandung, Semarang, Surabaya, Palembang, Padang, Medan, Pontianak, Makassar, Manado, and Banjarmasin.

*Sources:* as for figure 1

For the colonial period the CV for 11 cities only covers the period 1927-1931. To extend these findings to a larger period a CV for 7 cities is also calculated. These cities are Weltevreden (Jakarta), Bandung, Semarang, Surabaya, Yogyakarta, Surakarta (Solo) and Malang. One has to be careful with this comparison since not all of these cities are included in the CV for 11 cities. More importantly these 7 cities are all on Java, while the cv8 and cv11 cover Indonesia as a whole. However the correlation between the cv11 and cv7 is striking, so it is believed that the cv7 is a good proxy for changes in fluctuations between markets for the colonial period.

Keeping this in mind, figure 5 to a large extent supports our findings so far. Fluctuations between markets are low on Java, and probably Indonesia as a whole, in the 1920s and 1930s. In the years following independence they are extremely high and although falling around 1953 price differences between markets remain variable and in general rather high. After Suharto came to power rehabilitation of the infrastructure and a more efficient distribution system resulted in more stable prices. The oil boom caused once more a disruption in 1973, but afterwards prices fluctuations between markets return to levels comparable to the ones on Java in the 1920s.

The patterns of stabilization of rice prices, as especially suggested by figure 1, seem to mirror to a large extent price fluctuations between markets fall. It is tempting to interpret this result as increasing market integration. However, as Ravallion (1987) has shown, if prices at different markets are generated by identical but independent processes, nothing can be inferred about the interlinkage of markets from these kind of results.

Thus to see whether rice markets have indeed been become better integrated as this simple approach to market integration suggests we have to adopt a more advanced method.

#### *4.2 ADVANCED TESTING FOR MARKET INTEGRATION: METHOD*

Two product markets are said to be integrated if the price in the importing market equals the price in the exporting market plus the transportation and other transfer costs of moving the product between the two markets (Baulch 1997: 514). Put differently if we have two markets trading in a commodity in period  $t$ , these markets are integrated if the price in one market,  $P_{1t}$ , equals the simultaneous price in the other,  $P_{2t}$ , plus transfer costs  $K_t$ :

$$P_{1t} = P_{2t} + K_t \quad (1)$$

If (1) holds, there is no incentive to trade. Arbitrage will occur when  $|P_{1t} - P_{2t}| > K_t$ .

Several methods have been used to measure market integration. Advocated by Granger and Elliot (1967) simple bivariate correlation coefficients, also called the Law of One Price (LOP), have long been the most common measure used.<sup>6</sup> Later this method was strongly criticised, most notably by Harriss (1979) and Ravallion (1986). Advances in time series econometrics led to the development of models that address some of the perceived weaknesses in the correlation coefficient approach. In this respect, Ravallion (1986) proposed a dynamic model of spatial price differentials incorporating time lags.

One major drawback however remained. Both the LOP and Ravallion models test whether price changes in one market will be translated on a one-for-one basis to the other market, either instantaneously (LOP) or with lags (Ravallion). But prices in different markets will only move on a one-for-one basis if the intermarket price differential is equal to transfer costs. Thus price movements inside the bandwidth set by the transfer costs do not harm the hypothesis of market integration, whereas these models possibly reject this hypothesis.

Palaskas and Harris-White (1993) and Alexander and Wyeth (1994) therefore extended Ravallion's model using cointegration and Granger causality ordinary least squares (OLS) techniques. This allowed testing for more general notions between markets and measures whether prices in two markets wander within a fixed band (Baulch 1997: 518).

A limitation of these models, however, is that all models are in fact 'static'. Markets are either integrated or not. This requires the assumption of a constant market structure throughout the entire sample period. It implies that when observations for different sub-periods are limited, then doing market integration analysis is not feasible (Dercon, 1995).

Presently the most common approach to test for market integration is using a Vector Error Correction Model applied among others by Persson (1999), Gonzales-Rivera and Helfand (2001), Dawson and Dey (2002) and Baten and Wallusch (2003). This study adopts the same method for which the following steps are required.

---

<sup>6</sup> See for example Gilbert (1969), Illori (1968), Cummings (1967), Lele (1967;1971) and Jones (1972)



a) Test for stationarity (Augmented Dickey-Fuller, ADF)

As suggested by Engle and Granger (1987) before applying the cointegration tests one should test for a unit root in the individual price series. The standard procedure to test for this unit root is the Augmented Dickey-Fuller test. If the test statistic is below the critical value we cannot reject the null hypothesis of a unit root. An ADF is conducted first on the (log)level of the series and subsequently on the first difference. The lag length is determined by minimizing of the Schwarz Criterion.

Often price series turn out to be integrated of order 1,  $I(1)$ , meaning that the level of the prices is a non-stationary process, while the first difference is a stationary process (Persson 1999: 116). If the results show that each individual time series is  $I(1)$  it allows the researcher to apply the Johansen and Juselius (1990) cointegration tests.

b) Cointegration test/Rank test

A linear combination of two or more non-stationary series may be stationary. If such a stationary, or  $I(0)$ , linear combination exists, the non-stationary (with a unit root) time series are cointegrated. The stationary linear combination is called the cointegrating equation and may be interpreted as a long-run equilibrium relationship between the variables.

After assuring that our individual series are non-stationary we are now interested whether the series are cointegrated and, if they are, in identifying the long run relationship.

Testing for cointegration is done following the methodology developed by Johansen (1991, 1995). Johansen's method is to test the restrictions imposed by cointegration on the unrestricted VAR. It estimates a matrix  $\pi$  in an unrestricted form, and then tests whether the restrictions implied by the reduced rank of  $\pi$  can be rejected.

If  $\pi$  has full rank it means there are as many stationary relations as there are variables. If  $\pi$  has rank one, it means that there exists one stationary relation among the variables. If  $\pi$  has rank 0, it means that a stationary relation does not exist.

Two test statistics are given by Johansen and Juselius (1990) to test for this number of cointegrating vectors: the trace test and the maximal eigenvalue test. The rank of  $\pi$  is estimated sequentially from  $r=0$  to  $r=k-1$  until we fail to reject. If both test statistics are greater than the critical values as given in Osterwald-Lenum (1992: 467), the null hypothesis is rejected.

But before actually doing the test described above we first have to decide what kind of model we choose. There are five possibilities: (I) without any deterministic variable in both cointegrating equation and in VAR, (II) with intercept in cointegrating equation, (III) intercept in both cointegrating equation and in VAR, (IV) intercept and linear trend in cointegrating equation and intercept in VAR, and (V) intercept and linear trend in both cointegrating equation and in VAR.

Since there is no economic explanation for a linear trend assuming long-run equilibrium conditions, we would expect model III to generate the best outcome.

Moreover we would expect  $\pi$  to have rank one. Consider the case that there would be more than one cointegrating relationship, for example two. This would mean that some prices could be generated by the first, some by the second and some by a combination of the first and second. In that case we would not call these markets integrated (Gonzales-Rivera and Helfand 2001). So if we find a rank different from 1 we conclude that markets are not integrated.

### c) A Vector Error Correction Model

If two series are cointegrated we can test for a long-term equilibrium. The procedure is based on maximum likelihood estimation of the vector error correction model (VECM):

$$\Delta x_t = \mu + \Gamma_1 \Delta x_{t-1} + \Gamma_2 \Delta x_{t-2} + \dots + \Gamma_{k+1} \Delta x_{t-k+1} + \pi x_{t-k} + \Psi D + \varepsilon_t \quad (2)$$

where  $x_t = [P_{1t}, P_{2t}]'$ , which are  $I(1)$ ,  $\Delta x_t = x_t - x_{t-1}$ ,  $\mu$  is a  $(2 \times 1)$  vector of parameters,  $\Gamma_1, \dots, \Gamma_{k+1}$  and  $\pi$  are  $(2 \times 2)$  matrices of parameters,  $D$  are 11 centred monthly dummies,  $\Psi$  is a  $(2 \times 11)$  matrix of parameters, and  $\varepsilon_t$  is a  $(2 \times 1)$  vector of white noise errors.

When  $\pi$  is of reduced rank, that is  $r \leq 1$ , it can be decomposed into  $\pi = \alpha\beta'$  and when  $r=1$ ,  $\alpha = [\alpha_1, \alpha_2]'$  is the adjustment vector and  $\beta = [\beta_1, \beta_2]'$  is the cointegrating vector. In this case equation (1) can be rewritten as:

$$\begin{bmatrix} \Delta P_{1t} \\ \Delta P_{2t} \end{bmatrix} = \begin{bmatrix} \mu_1 \\ \mu_2 \end{bmatrix} + \sum_{i=1}^{k-1} \begin{bmatrix} \Gamma_{i,11} & \Gamma_{i,12} \\ \Gamma_{i,21} & \Gamma_{i,22} \end{bmatrix} \begin{bmatrix} \Delta P_{1t-i} \\ \Delta P_{2t-i} \end{bmatrix} + \begin{bmatrix} \alpha_1 \\ \alpha_2 \end{bmatrix} \beta_1 \beta_2 \begin{bmatrix} P_{1t-k} \\ P_{2t-k} \end{bmatrix} + \Psi D + \begin{bmatrix} \varepsilon_{1t} \\ \varepsilon_{2t} \end{bmatrix} \quad (3)$$

Given cointegration, the hypothesis test of interest is the null that  $\beta_1=1$  and  $\beta_2=-1$  using a likelihood ratio (LR) statistic. Non-rejection of the null hypothesis implies perfect market integration, while rejection implies imperfect market integration. The test result has a  $\chi^2$  distribution. The p-value indicates whether or not the null hypothesis of market integration must be rejected. Insignificant  $\chi^2$ -values (corresponding to high p-values) indicate that the null hypothesis of market integration cannot be rejected, and a stable price ratio exists.

If we cannot reject the null hypothesis we can interpret the estimates of  $\alpha_1$  and  $\alpha_2$  which indicate the extent to which extent prices in the respective cities adjusted to shocks in the relationships – i.e. the speed of adjustment of  $P_{1t}$  and  $P_{2t}$  to a disequilibrium error in each period. These coefficients are normally distributed and dividing the coefficient by its standard deviation we can calculate a t-value and see whether the coefficients are significant. A significant  $\alpha$  indicates that prices adjust.

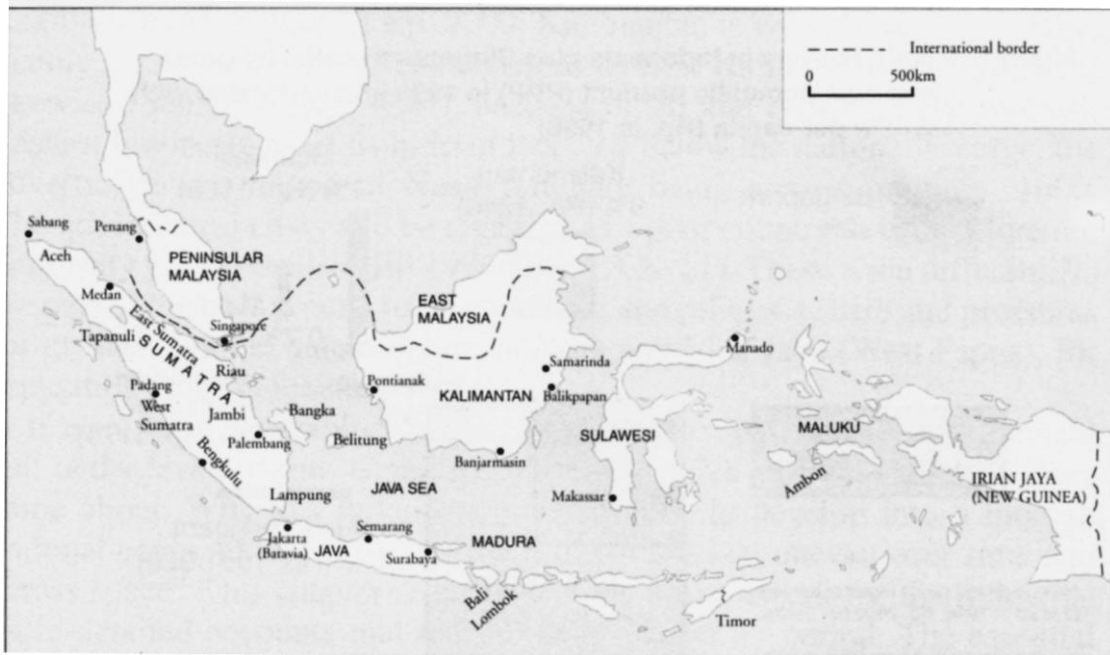
#### *4.3 ADVANCED TESTING FOR MARKET INTEGRATION: RESULTS*

As the preceding discussion of the literature has shown, a broad range of methods has been used to test for market integration. Since an Vector Error Correction Model (VECM) is the most advanced, and most widely used method in the recent literature on market integration, we will adopt this method as well to test for market integration in Indonesia.

The basic idea behind this method is that if prices in two markets show a long-term linear relationship, then a short-term shock cannot persist permanently in integrated markets as arbitrage between these markets would prevent this. The higher the efficiency of the markets, that is the more integrated the markets are, the faster this error in the equilibrium price ratio will be re-established.

In testing for market integration in Indonesia 9 cities are included in the analysis. These are Jakarta, Semarang and Surabaya on the island of Java, Medan and Palembang on representing Sumatra, Banjarmasin and Pontianak on Kalimantan and Manado and Makassar on Sulawesi. Unfortunately it is not possible to include Eastern parts of Indonesia since data for these cities are only available since 1988. The location of the different cities is shown in figure 6.

Figure 6: Map of Indonesia with its major cities



Source: Dick et al. 2002: 11

The first step taken was to test whether the price series were stationary. For this end the augmented Dickey-Fuller test (ADF) was used. As can be seen in table 1 all series, and for all sub-periods, were integrated of the order 1, with a significance level of 1 per cent, except for Jakarta for the period 1969-1986 for which the hypothesis of a unit root in the first differences was rejected at a 5 per cent significance level. Thus all series are stationary in first differences and thus it is possible to test for dynamic price relationships using concepts of cointegration.

The next step was to select a lag length for the VECM. Minimizing the Schwarz criterion was used to this end. Having decided the lag length an unrestricted VAR was estimated to test for cointegration. Since we are using monthly data 11 seasonal dummies were included in the model. Based on both the trace value and the eigenvalue it was determined whether the price series had a long-run equilibrium relationship (i.e. were cointegrated). If two price series turned out to be cointegrated, a restricted model was run testing the hypothesis whether the ratio of prices in the two cities was constant. If this hypothesis was accepted the last step was to estimate the adjustment coefficients under this hypothesis.

**Table 1: Augmented Dickey-Fuller unit root tests**

Price series	1949-1963		1969-1986		1987-2006	
	ADF test statistic	Lag order	ADF test statistic	Lag order	ADF test statistic	Lag order
<i>Levels</i>						
Jakarta	1.30	0	-1.50	14	-0.35	2
Semarang	0.69	1	-1.51	5	-0.55	1
Surabaya	1.18	4	-2.08	0	-0.52	1
Medan	0.36	1	-1.51	0	-0.23	2
Palembang	0.78	0	-1.54	4	-0.05	1
Pontianak	3.28	0	-1.29	2	-0.34	0
Banjarmasin	-0.10	3	-0.95	2	-0.43	1
Manado	-0.50	0	-0.75	4	-0.37	0
Makassar	1.02	1	-1.62	0	0.29	0
<i>First differences</i>						
Jakarta	-12.85*	0	-3.49**	13	-10.75*	1
Semarang	-8.48*	0	-9.53*	4	-11.96*	0
Surabaya	-6.91*	3	-15.76*	0	-11.59*	0
Medan	-8.84*	0	-11.90*	1	-12.62*	0
Palembang	-9.81*	0	-10.80*	3	-12.36*	0
Pontianak	-6.95*	1	-12.65*	1	-5.90*	4
Banjarmasin	-7.07*	2	-10.65*	1	-11.78*	0
Manado	-10.92*	0	-9.81*	3	-15.25*	0
Makassar	-9.97*	0	-10.89*	2	-14.15*	0

Note: critical values are -2.58 ( $\alpha=0.10$ ), -2.89 ( $\alpha=0.05$ ) and -3.51 ( $\alpha=0.01$ )

\* indicates rejection of the null hypothesis of a unit root at  $\alpha=0.01$ , \*\* at  $\alpha=0.05$ .

Lag order was determined using Schwarz Information Criterion (SIC)

Table 2 reports the results of these exercises for: (a) three specific cities: Semarang (representing Java), Medan (representing Sumatra), and Banjarmasin (representing the Other Islands) (for the other results see the appendix). (b) three different periods: i) 1949-1963; ii) 1969-1986; and iii) 1987-2006.

The periodization is partly influenced by the fact that enough observations are necessary to test for cointegration. More importantly the different periods characterize different policy regimes. The period 1949-1963 is characterized by stagnating economic growth, and inward-oriented economic policy. When Suharto came to power in the late 1960s the Indonesian economy started to industrialize in a highly protective environment. The oil shocks caused massive cash inflow and made import substitution-based industrialization possible. The decrease in oil prices in the early 1980s forced the Indonesian government to reorient its economic policy. Therefore a number of liberalization measures were taken. Only in 1987 these liberalizing measures started really to pay off.

It needs to be stressed that the results are not sensitive to the periodization chosen. Including or excluding one or two years does not significantly change the outcomes. Moreover simulation with dummies for the Asian crisis or the oil shocks did not result in significant different results.

Analyzing the table below, a number of interesting observations can be made. Initially Semarang is closely integrated with other cities on Java (i.e. Jakarta and Surabaya). With cities outside Java there is a long-term equilibrium with Makassar, but price changes in the two cities are not efficiently transmitted.

With Banjarmasin, which is located straight across the Java Sea both a long-term equilibrium exist and there is short term market integration. However the coefficients of adjustment are lower than those of Semarang with cities on Java (0.148 for Banjarmasin versus 0.244 and 0.349 for Jakarta and Surabaya respectively). Also Medan is integrated with Semarang but the coefficient of adjustment is again lower (0.125). This can probably be attributed to the fact that the distance from Semarang to Medan is approximately 4.5 times the distance from Semarang to Banjarmasin.

In the period 1969-1986 it is interesting to see that markets become more integrated. In this period the rice market in Semarang is integrated with all other urban centres in Indonesia in the analysis, except for Makassar. At the same time, however, a price shock in Semarang is no longer transmitted on a one to one basis to Jakarta, Surabaya and Banjarmasin, which is reflected by the rejection of the null hypothesis of heterogeneity for those city pairs. Apparently improvements in infrastructure resulted in the Semarang rice market to be integrated with more market in the long-run. Short-term integration with cities in its vicinity deteriorated, however.

In the subsequent period changes are limited. Short-run integration between Semarang and Surabaya and Banjarmasin is restored, while the null hypothesis of heterogeneity is still rejected for Jakarta. Changes in the coefficients of adjustment are mixed, but do not show major shifts.

**Table 2: Cointegration results for Semarang, Medan and Banjarmasin, 1949-2006**

Period	Cities	Lag length	Cointegration	Heterogeneity	Alfa1		Alfa2		Gamma
					Coefficient	t-value	Coefficient	t-value	
1949-1964	Semarang-Jakarta	1	+	0.8405	-0.055	-0.782	0.188	<b>2.203</b>	0.244
	Semarang-Surabaya	1	+	0.6021	-0.219	<b>-3.362</b>	0.130	1.737	0.349
	Semarang-Medan	2	+	0.3757	-0.049	-1.680	0.070	<b>2.565</b>	0.120
	Semarang-Palembang	1	-						
	Semarang-Pontianak	1	-						
	Semarang-Banjarmasin	2	+	0.1172	-0.049	-1.791	0.099	<b>2.876</b>	0.148
	Semarang-Manado	1	-						
	Semarang-Makassar	2	+	0.0201*					
1969-1986	Semarang-Jakarta	1	+	0.0032*					
	Semarang-Surabaya	1	+	0.0019*					
	Semarang-Medan	1	+	0.1806	-0.049	-1.681	0.117	<b>3.428</b>	0.166
	Semarang-Palembang	1	+	0.1734	-0.048	-1.729	0.147	<b>4.427</b>	0.195
	Semarang-Pontianak	2	+	0.9348	-0.016	-0.462	0.158	<b>3.183</b>	0.174
	Semarang-Banjarmasin	1	+	0.0104*					
	Semarang-Manado	1	+	0.2570	-0.036	-1.319	0.089	<b>3.553</b>	0.125
	Semarang-Makassar	1	-						
1987-2006	Semarang-Jakarta	2	+	0.0108*					
	Semarang-Surabaya	2	+	0.5704	-0.122	<b>-2.053</b>	0.098	1.655	0.220
	Semarang-Medan	2	+	0.3241	-0.105	<b>-2.759</b>	0.056	1.987	0.161
	Semarang-Palembang	2	-						
	Semarang-Pontianak	2	+	0.9383	-0.042	-1.236	0.112	<b>2.776</b>	0.154
	Semarang-Banjarmasin	2	+	0.1532	-0.079	<b>-3.493</b>	0.071	<b>2.361</b>	0.150
	Semarang-Manado	1	+	0.1104	-0.024	-0.882	0.144	<b>4.395</b>	0.168
	Semarang-Makassar	1	-						
1949-1964	Medan-Semarang	2	+	0.3757	-0.070	<b>-2.565</b>	0.049	1.680	0.120
	Medan-Surabaya	2	-						
	Medan-Jakarta	1	-						
	Medan-Palembang	1	+	0.1210	-0.108	<b>-3.341</b>	0.070	1.850	0.178
	Medan-Pontianak	2	+	0.0111*					
	Medan-Banjarmasin	2	+	0.0939	-0.047	-1.999	0.082	<b>2.734</b>	0.129
	Medan-Manado	1	+	0.3729	-0.052	-1.369	0.170	<b>3.690</b>	0.222
	Medan-Makassar	2	+	0.5910	-0.071	<b>-2.340</b>	0.057	<b>2.178</b>	0.127
1969-1986	Medan-Semarang	1	+	0.1806	-0.117	<b>-3.428</b>	0.049	1.681	0.166
	Medan-Surabaya	1	-						
	Medan-Jakarta	1	+	0.4852	-0.094	<b>2.367</b>	0.084	<b>2.399</b>	0.178
	Medan-Palembang	1	+	0.1343	-0.058	-1.349	0.187	<b>4.240</b>	0.245
	Medan-Pontianak	3	+	0.0223*					
	Medan-Banjarmasin	1	+	0.2876	-0.036	-1.072	0.162	<b>4.314</b>	0.197
	Medan-Manado	1	+	0.3558	-0.054	-1.236	0.146	<b>4.546</b>	0.200
	Medan-Makassar	1	+	0.9175	-0.129	<b>-3.601</b>	0.094	<b>3.294</b>	0.224
1987-2006	Medan-Semarang	2	+	0.3241	-0.056	-1.987	0.105	<b>2.759</b>	0.161
	Medan-Surabaya	2	+	0.5959	-0.046	-1.979	0.078	<b>2.390</b>	0.124
	Medan-Jakarta	2	+	0.1778	-0.057	-1.924	0.080	<b>2.235</b>	0.136
	Medan-Palembang	2	+	0.6243	-0.044	-1.385	0.094	<b>2.362</b>	0.138
	Medan-Pontianak	1	-						
	Medan-Banjarmasin	2	+	0.6487	-0.044	<b>-2.921</b>	0.079	<b>2.796</b>	0.123
	Medan-Manado	1	+	0.2421	-0.011	-0.495	0.164	<b>4.121</b>	0.175
	Medan-Makassar	1	+	0.9315	-0.009	0.347	0.145	<b>3.813</b>	0.136

Period	Cities	Lag length	Cointegration	Heterogeneity	Alfa1		Alfa2		Gamma
					coefficient	t-value	coefficient	t-value	
1949-1964	Banjarmasin-Semarang	2	+	0.1172	-0.099	<b>-2.876</b>	0.049	1.791	0.148
	Banjarmasin-Surabaya	4	-						
	Banjarmasin-Jakarta	1	-						
	Banjarmasin-Medan	2	+	0.0939	-0.082	<b>-2.734</b>	0.047	1.999	0.129
	Banjarmasin-Palembang	2	-						
	Banjarmasin-Pontianak	1	-						
	Banjarmasin-Manado	1	-						
1969-1986	Banjarmasin-Makassar	2	+	0.1066	-0.116	<b>-3.403</b>	0.047	1.876	0.162
	Banjarmasin-Semarang	1	+	0.0104*					
	Banjarmasin-Surabaya	1	+	0.1431	-0.198	<b>-4.669</b>	0.044	1.153	0.242
	Banjarmasin-Jakarta	1	+	0.0784	-0.186	<b>-3.906</b>	0.002	0.064	0.189
	Banjarmasin-Medan	3	+	0.2876	-0.162	<b>-4.314</b>	0.036	1.072	0.197
	Banjarmasin-Palembang	2	+	0.1034	-0.187	<b>-3.535</b>	0.098	<b>2.193</b>	0.285
	Banjarmasin-Pontianak	3	+	0.0019*					
1987-2006	Banjarmasin-Manado	1	+	0.2290	-0.152	<b>-3.013</b>	0.049	1.470	0.201
	Banjarmasin-Makassar	2	+	0.2734	-0.183	<b>-4.098</b>	0.059	1.894	0.243
	Banjarmasin-Semarang	2	+	0.1532	-0.071	<b>-2.361</b>	0.079	<b>3.493</b>	0.150
	Banjarmasin-Surabaya	2	+	0.1428	-0.079	<b>-2.432</b>	0.107	<b>4.169</b>	0.186
	Banjarmasin-Jakarta	2	+	0.7828	-0.089	<b>-2.910</b>	0.065	<b>3.118</b>	0.154
	Banjarmasin-Medan	2	+	0.6487	-0.079	<b>-2.796</b>	0.044	<b>2.921</b>	0.123
	Banjarmasin-Palembang	2	+	0.5132	-0.074	<b>-2.469</b>	0.077	<b>3.709</b>	0.152
Banjarmasin-Pontianak	2	+	0.1335	-0.084	<b>-2.712</b>	0.116	<b>3.994</b>	0.200	
Banjarmasin-Manado	1	+	0.7569	-0.0209	-0.930	0.083	<b>3.790</b>	0.104	
Banjarmasin-Makassar	1	+	0.8831	-0.043	-1.808	0.079	<b>4.154</b>	0.122	

Source:

Note: Lag length determined using Schwarz Information Criterion (SIC)

\*: indicates null hypothesis of heterogeneity is rejected.

**Bold** indicates a significant t-value (i.e. > 2)

For Medan the story is quite similar. There is comparatively strong integration with the other city on Sumatra, Palembang. Moreover, integration between Medan and other markets seems to follow a kind of inverted U-curve. Comparing the period 1949-1964 with 1969-1986 we see a rather strong increase in the coefficients of adjustment. In the subsequent period, however, these coefficients fall again to levels comparable to the 1949-1964 period. At the same time, the Medan rice market has a long-run equilibrium with all other markets in the analysis except for Pontianak. This suggests that in the most recent period markets are integrated in the long-run, but that in the short-run reaction to price shocks are rather slow.

Banjarmasin is also an interesting case. In the period after independence it was only cointegrated with Semarang and Medan. This changed in the subsequent period in which it



is cointegrated with all other cities in our sample, although it has to be noted that for Semarang and Pontianak the null hypothesis of heterogeneity was rejected. Just as was the case with Medan the coefficients of adjustment in this period were quite high. The period 1987-2006 again shows strong cointegration with all other markets in Indonesia, but significantly lower coefficients of adjustment compared to the preceding period.

The findings of this market integration analysis to a large extent support the earlier conclusions regarding market efficiency. The first years after independence show that it was hard to speak of a 'national' economy in Indonesia. Market integration was in most cases limited to cities in close vicinity or those with close trade relations. For many city pairs, however, the hypothesis of cointegration was rejected. This confirms Mears statement about the 1950s that 'there is still no Indonesian common market, with prices in the separate areas differing by only the cost of transport' (Mears 1961: 11).

In the subsequent period a shift took place, not only to more market integration in the long-run (thus being cointegrated), but also in the short-run. Coefficients of adjustment are high in the years between 1969 and 1987. Apparently the improved infrastructure combined with efficient procurement by Bulog and efficient networks of private traders resulted not only in lower variance in rice prices over time. Also there was a quite rapid adjustment if price differentials existed in markets.

This efficient functioning of markets is significantly lower in the period 1987-2006. Although most markets still have a long-run equilibrium, the speed of adjustment is lower. It is probable that the monopoly that Bulog has held since its establishment in 1969 seriously harmed (private) market incentives. Another possibility is that the increased complexity of the distribution networks has made it more difficult to swiftly react to price signals.

## **5. CONCLUDING REMARKS**

Economic literature offers theoretical foundations why stable prices and market integration lead to economic growth. This paper has shown how across time and across space market efficiency and market integration changed in Indonesia using rice price series for different cities in Indonesia.

It was suggested that under the colonial administration markets were functioning relatively well. Rice price fluctuations were confined and evidence suggests that markets, at least on Java, were integrated. After independence increased uncertainty, a devastated infrastructure and lack of political power to tackle these problems affected both price stability and market integration. Not surprisingly this resulted in a stagnating economy.

After Suharto came to power economic policy became one of the priorities of the new government. The two oil booms during the 1970s provided the government with the means to get the economy on an unprecedented growth path. Large investments were made in infrastructure and measures were taken to regulate rice prices. Especially after the establishment of Bulog in 1969 the government started to heavily regulate rice markets. This resulted in high price stability and increased market integration, which in turn were translated in high growth rates.

Since 1987 the goal of stabilization of rice prices is still attained, despite a small increase in fluctuations since the beginning of the 21<sup>st</sup> century caused by the reforms taken to limit the monopoly power of Bulog and give more room to market forces. This change has not been reflected yet in the market integration analysis. In this last period under study Indonesia's rice market was clearly integrated. The speed of adjustment coefficients, however, were lower than before signalling inefficiencies in the rice market.

## References

Alexander, C. and J. Wyeth (1994), 'Cointegration and Market Integration: An Application to the Indonesian Rice Market', *Journal of Development Studies*, Vol.30, No. 2, pp. 303-328.

Anderson, J.R. and J.A. Roumasset (1996), 'Food Insecurity and Stochastic Aspects of Poverty', *Asian Journal of Agricultural Economics*, Vol. 2, No. 1, pp. 53-66.

Barro, R.J. and X. Sala-i-Martin (1995), *Economic Growth*, London: McGraw-Hill.

Baten, J. and J. Wallusch (2003), 'Market Integration and Disintegration of Poland and Germany in the 18<sup>th</sup> Century', *Tübingen Economics Department Working Paper* No. 268.

Baulch, B. (1997), 'Transfer Costs, Spatial Arbitrage and Testing for Food Market Integration', *American Journal of Agricultural Economics*, Vol. 79, No. 2, pp. 477-487.

Behrman, J.R. (1984), 'The Analytics of International Commodity Agreements', in: C.K. Eicher and J.M. Staatz (eds.) *Agricultural Developments in the Third World*, Baltimore: Johns Hopkins University Press, pp. 241-252.

BPS, *Statistical Yearbook of Indonesia*, various issues, Jakarta: BPS

Creutzberg, P. (1974), *Het Ekonomisch Beleid in Nederlandsch-Indië. Capita Selecta. Een Bronnenpublikatie*. Groningen: Wolters-Noordhoff.

Cummings, R.W. (1967), *Pricing Efficiency in the Indian Wheat Market*, New Delhi: Impex.

Dawe, D. (1996), 'A New Look at the Effects of Export Instability on Investment and Growth', *World Development*, Vol. 24, No. 12, pp. 1905-1914.

Dawe, D. (1997), 'Should Asia Move to Free Trade in Rice?', in: C. Silitonga et al. (ed.) *30 Tahun Peran Bulog dalam Ketahanan Pangan*, Jakarta: Bulog, pp. 399-424.

Dawson, P.J. and P.K. Dey (2002), 'Testing for the Law of One Price: Rice Market Integration in Bangladesh', *Journal of International Development*, Vol. 14, pp. 473-484.

Dercon, S. (1995), 'On Market Integration and Liberalisation: Method and Application to Ethiopia', *Journal of Development Studies*, Vol. 32, No.1, pp. 112-143.

Dick, H.W., V.J.H. Houben, J.Th. Lindblad and Thee Kian Wie (2002), *The Emergence of a National Economy. An Economic History of Indonesia, 1800-2000*, Crows Nest: Allen & Unwin.

Engle, R.F. and C.W.J. Granger (1987), 'Cointegration and Error Correction: Representation, Estimation, and Testing', *Econometrica*, Vol. 2, pp. 251-276.

Food and Agriculture Organization (FAO) (1991), 'Demand Prospects for Rice and Other Foodgrains in Selected Asian Countries', *United Nations FAO Economic Social Development Paper*.

Gilbert, E.H. (1969), 'Marketing of Staple Foods in Northern Nigeria: A Study of Staple Food Marketing Systems Serving Kano City', PhD thesis, Stanford University.

Gonzales-Rivera, G. and S.M. Helfand (2001), 'The Extent, Pattern, and Degree of Market Integration: A Multivariate Approach for the Brazilian Rice Market', *American Journal of Agricultural Economics*, Vol. 83, No. 3, pp. 576-592.

Granger, C.W. and C.M. Elliot (1967), 'A Fresh Look at Wheat Prices and Markets in the Eighteenth Century', *Economic History Review*, Vol. 20, pp. 257-265.

Granger, C.W. (1981), 'Some Properties of Times Series Data and Their Use in Econometric Model Specification', *Journal of Econometrics*, Vol. 16, No. 1, pp. 121-130.

Harriss, B. (1979), 'There is Method in My Madness: Or Is It Vice-Versa? Measuring Agricultural Market Performance', *Food Research Institute Studies*, Vol. 17, pp. 197-218.

Illori, C. (1968), 'Economic Study of Production and Distribution of Staple Foodcrops in Western Nigeria', PhD thesis, Stanford University.

Ismet, M., A.P. Barkley, and R.V. Llewelyn (1998), 'Government Intervention and Market Integration in Indonesian Rice Markets', *Agricultural Economics*, Vol. 19, pp. 293-295.

Johansen, S. (1991), 'Estimation and Hypothesis Testing of Cointegration Vectors in Gaussian Vector Autoregressive Models', *Econometrica*, Vol. 59, No. 6, pp. 1551-1580.

Johansen, S. (1995), 'Identifying Restrictions of Linear Equations with Applications to Simultaneous Equations and Cointegration', *Journal of Econometrics*, Vol. 69, No. 1, pp. 111-132.

Johansen, S. and K. Juselius (1990), 'Maximum Likelihood Estimation and Inference on Cointegration – with Application to the Demand for Money', *Oxford Bulletin of Economic Statistics*, Vol. 52, No. 2, pp. 169-210.

Jones, W.O. (1972), *Marketing Staple Food Crops In Tropical Africa*, Ithaca, NY: Cornell University Press.

Lele, U.J. (1967), 'Market Integration: A Study of Sorghum Prices in Western India', *Journal of Farm Economics*, Vol. 49, pp. 147-159.

Lele, U.J. (1969), *Food Grain Marketing in India, Private Performance and Public Policy*, Ithaca, NY: Cornell University Press.

McCulloch, N. and C.P. Timmer (2008), 'Rice Policy in Indonesia: A Special Issue', *Bulletin of Indonesian Economic Studies*, Vol. 44, No. 1, pp. 33-44.

Mears, L.A. (1961), *Rice Marketing in the Republic of Indonesia*. Jakarta: Institute of Economic and Social Research.

Mears, L.A. (1981), *The New Rice Economy of Indonesia*, Yogyakarta: Gadjah Mada University Press.

Natawidjaja, R.S. (2001), 'Dinamika Pasar Beras Domestik' [Domestic Rice Market Dynamics], in: A. Suryana & S. Madianto (eds.) *Bunga Rampai Ekonomi Beras* [Antology of the Rice Economy], Jakarta: LPEM-FEUI, pp. 59-81.

Newbery, D.M.G. and J.E. Stiglitz (1979), 'The Theory of Commodity Price Stabilization Rules: Welfare Impacts and Supply Responses', *Economic Journal*, Vol. 89, pp. 799-817.

Newbery, D.M.G. and J.E. Stiglitz (1981), *The Theory of Commodity Price Stabilization: A Study in the Economics of Risk*, New York: Oxford University Press.

North, D.C. (1981), *Structure and Change in Economic History*. New York: Norton.

North, D.C. (1990), *Institutions, Institutional Change and Economic Performance*. Cambridge: Cambridge University Press.

Ó Gráda, C. (1999), *Black '47 and Beyond: The Great Irish Famine in History, Economy and Memory*, Princeton, NJ: Princeton University Press.

Ó Gráda, C. (2001), 'Markets and Famines: Evidence from Nineteenth-century Finland', *Economic Development and Cultural Change*, Vol. 49, No. 3, pp. 575-590.

Ó Gráda, C. and J.M. Chevet (2002), 'Famine and Market in Ancien Régime France', *The Journal of Economic History*, Vol. 62, No. 3, pp. 706-733.

Osterwald-Lenum, M. (1992), 'A Note with Quantiles of the Asymptotic Distribution of the Maximum Likelihood Cointegration Rank Test Statistics: Four Cases', *Oxford Bulletin of Economic Statistics*, vol. 54, No. 3, pp. 461-471.

Palaskas, T.B. and B. Harriss-White (1993), 'Testing Market Integration: New Approaches with Case Material from the West Bengal Food Economy', *Journal of Development Studies*, Vol. 30, No. 1, pp. 1-57.

Pearsson, S., W. Falcon, P. Heytens, E. Monke and R. Naylor (1991), *Rice Policy in Indonesia*. Ithaca, NY: Cornell University Press.

Persson, K.G. (1999), *Grain Markets in Europe, 1500-1900: Integration and Deregulation*, Cambridge: Cambridge University Press.

Piggot, R.R., K.A. Parton, E.M. Treadgold and B. Hutabarat (1993), *Food Price Policy in Indonesia*, ACIAR Monograph No. 22, Canberra: Australian Centre for International Agricultural Research.

Pinckney, Th.C. (1993), 'Is Market Liberalization Compatible with Food Security? Storage, Trade and Price Policies for Maize in Southern Africa', *Food Policy*, Vol. 18, No. 4, pp. 325-333.

Ravallion, M. (1986), 'Testing Market Integration', *American Journal of Agricultural Economics*, Vol. 68, No. 1, pp. 102-109.

Ravallion, M. (1987), *Markets and Famines*, Oxford: Clarendon Press.

Saifullah, A. (2001), 'Peran Bulog Dalam Kebijakan Perberasan Nasional' [The Role of Bulog in National Rice Policy], in: A. Suryana and S. Mardianto *Bunga Rampai Ekonomi Beras* [Anthology of the Rice Economy], Jakarta: LPEM-FEUI, pp. 83-101.

Sen, A. (1981), *Poverty and Famines: An Essay on Entitlement and Deprivation*, Oxford: Oxford University Press.

Squires, D. and S.T. Tabor (1987), 'Integration of Staple Food Commodity Markets in Java', *Singapore Economic Review*, Vol. 32, No. 2, pp. 1-15.

Tabor, S.T. (1992), 'Agriculture in Transition' in Booth A. (ed.) *The Oil Boom and After: Indonesian Economic Policy and Performance in the Suharto Era*. Singapore: Oxford University Press, pp. 161-196.

Timmer, C.P. (1974), 'A Model of Rice Marketing Margins in Indonesia', *Food Policy Research Institute Studies*, Vol. 13, No. 2, pp. 145-167.

Timmer, C.P. (1989a), 'Food Price Policy. The Rationale for Government Intervention', *Food Policy*, Vol. 14, No. 1, pp. 17-27.

Timmer, C.P. (1989b), 'Indonesia: Transition from Food Importer to Exporter', in: T. Sicular (ed.) *Food Price Policy in Asia: A Comparative Study*, Ithaca: Cornell University Press, pp. 22-62.

Timmer, C.P. (1996), 'Does Bulog Stabilise Rice Prices in Indonesia? Should it Try?' *Bulletin of Indonesian Economic Studies*, Vol. 32, No. 2, pp. 45-74.

Timmer, C.P. (2004), 'Food Security and Economic Growth: An Asian Perspective', Center for Global Development Working Paper No. 51.

Van der Eng, P. (1993), 'Agricultural Growth in Indonesia since 1880', PhD thesis, Groningen University.

Van Zanden, J.L. (2004), 'On the Efficiency of Markets for Agricultural Products: Rice Prices and Capital Markets in Java, 1823-1853', *The Journal of Economic History*, Vol. 64, No. 4, pp. 1028-1055.

Von Braun, J., Teklu, T. and P. Webb, *Famine in Africa : Causes, Responses, and Prevention*, Baltimore: Johns Hopkins University Press.

Williams, J.C. and B.D. Wright (1991), *Storage and Commodity Markets*, Cambridge: Cambridge University Press.



World Bank (1987), *Indonesia: Agriculture Incentives Policies, Issues and Options*. Washington DC: World Bank.

Yonekura, H. (2005), 'Institutional Reform in Indonesia's Food Security Sector: the Transformation of BULOG into a Public Corporation', *Developing Economies*, Vol. 43, No. 1, pp. 121-148.