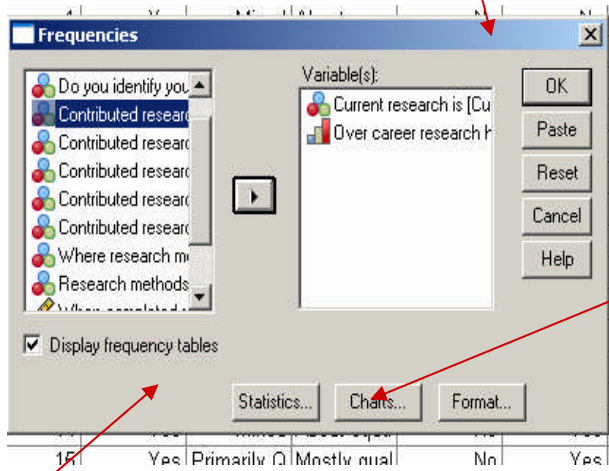


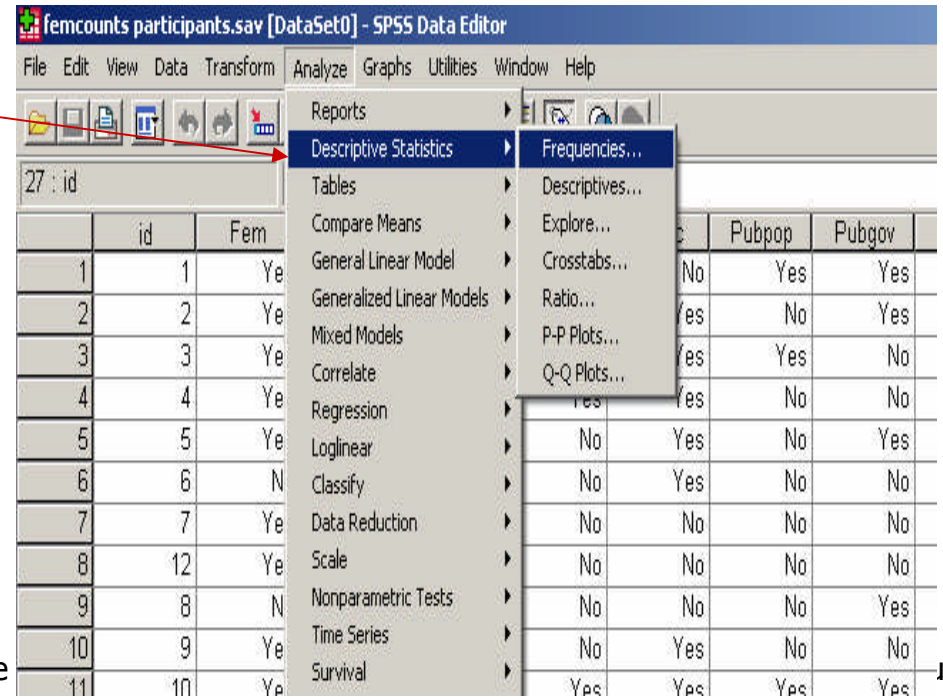
To look at the data that you have input

Go to **ANALYZE, DESCRIPTIVE STATISTICS, FREQUENCIES**

A new popup box will then appear.



Note: If you'd like to look at your data as charts there is an option to select a chart on the Frequencies pop-up box



In this box, highlight the variables that you'd like to look at, click on the can look at as many variables as you want at the same time. When you have all the variable that you want on the right hand side, click OK.

A new window should appear.

This is the **Output** window. This will include tables showing your data. You can scroll up and down to look at the data.

