


## Everyone has the power to change the world

Over the last 50 years Warwick has grown from a small and pioneering campus community to a world-class University that tops league tables and has global influence.


Every day, we are transforming lives through the power of education, and uncovering the answers to some of our biggest questions.

### Could you help us answer big questions with a gift in your Will?




The richest 1% are getting further and further away from the 99%. Does it matter?

How do we create a peaceful world with equal rights?




Alzheimer's is only one type of dementia. How do we prevent them all?

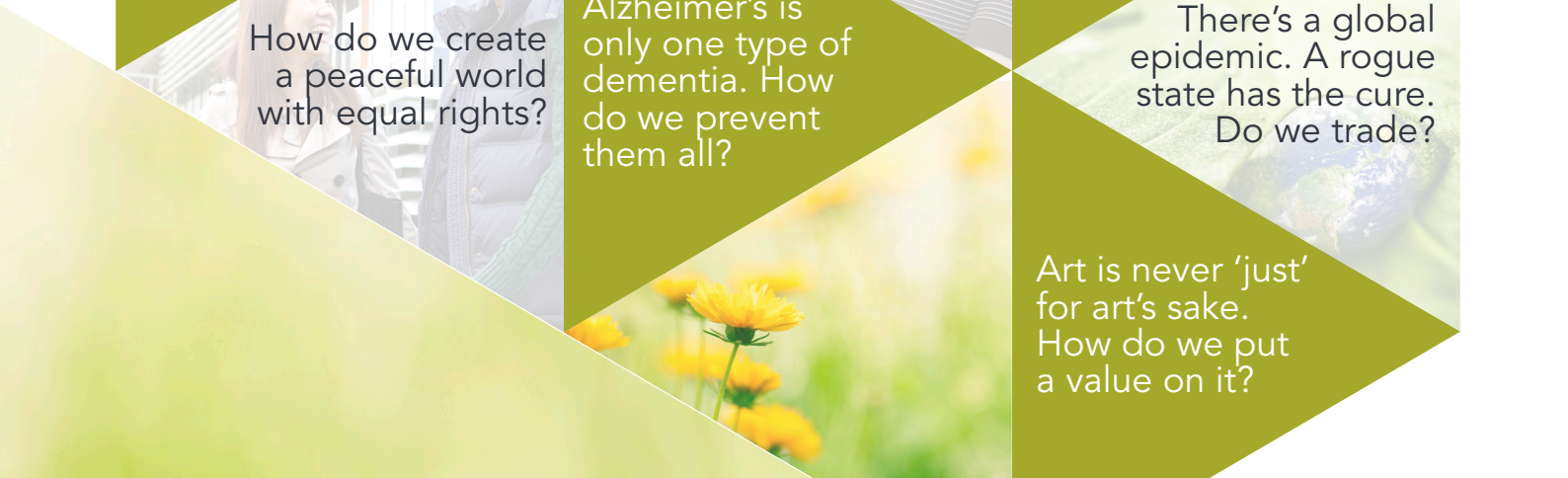
Should we welcome an increase in UK foodbanks?



Plug point or pump? What car do you want to drive in the future?



There's a global epidemic. A rogue state has the cure. Do we trade?



Art is never 'just' for art's sake. How do we put a value on it?

## Meet Noreen, Donald and Elizabeth

These supporters chose to change the world by including philanthropic gifts in their Wills.

- **Noreen Murray** was an academic whose zeal for science led her to donate to Warwick. Thanks to Noreen's legacy gift, early career researcher Matt Gibson has found a way to freeze and store blood for medical purposes which will completely revolutionise medical treatment across the globe.
- **Donald Bates** was a graduate from Warwick Business School who loved helping others. After being supported by grants during his studies, he wanted to help future students too. His gift to the Student Hardship Fund has helped many scholars to complete their studies.
- **Elizabeth Creak's** farm was five minutes away from the University's crop centre in Wellesbourne. Elizabeth left funds in her Will to her Trust, the Elizabeth Creak Charitable Trust. Her wish was that support should be given to agricultural education and research. Thanks to the support of the Trust and Elizabeth's philanthropy, we've started new research into crops and food security which will change the way we store and produce food.

## Their influence lives on. So can yours.

After you have cared for your loved ones, legacy gifts could support students, research, the Library, or whichever part of Warwick is most special to you.

Your gift will leave a lasting impact. Gifts remain recorded for future generations of students and staff to appreciate and, in this way, your generosity will be acknowledged forever.

### Would you consider remembering Warwick in your Will?

**Contact us today**  
**024 7657 4037**  
**[Benefactors@warwick.ac.uk](mailto:Benefactors@warwick.ac.uk)**





## What if we could diagnose and treat cancer faster?

---

At Warwick we're finding new, better ways to detect and treat cancer, and help patients through the side-effects of treatments.

Donations help us create new drug treatments and diagnostic tests, and reduce unpleasant side effects too.

---

***Could you consider leaving a gift to Cancer Research at Warwick in your Will?***

**WARWICK**  
THE UNIVERSITY OF WARWICK

### Did you know?

*100% of every gift goes straight to your chosen cause without administration fees.*

*As an exempt charity, leaving us a gift could save money on your inheritance tax bill too.*



Professor Peter Sadler  
Cancer Research Centre



"At the moment, the most widely used drugs used are platinum-based compounds. The problem is they attack both healthy and toxic cells, lead to serious side-effects, and stop working after repeated use. We're making them harmless until they enter the cancer cells, reducing side-effects."



Professor Annie Young  
Cancer Research Centre



"I want to look at some of the issues that cancer patients struggle with on a daily basis during their treatment. We're looking at scalp-cooling treatments for patients undergoing chemotherapy so that we can prevent hair loss which is such a psychological blow to patients."

# Cancer Research at Warwick

## Finding better ways to detect and treat cancer

### We're hitting cancer where it hurts

Our research looks at individualised cancer therapy in multiple areas not only to battle cancer itself and ensure early diagnosis but to make the treatment process more comfortable.

Our specialised Cancer Research Centre houses research into breast cancer screening, methods for less invasive tests to diagnose patients, and the use of scalp-cooling during chemotherapy to prevent hair loss.

The Centre will also bring together academics from various fields of research (including maths and science). This will help to develop digital technology; DNA extraction and sequencing, tissue storage and image analysis, and more.

The fight against cancer is a global one and thanks to philanthropic support, Warwick is playing its part.

If you are considering a donation to the Cancer Research Centre, we might be able to arrange a visit to our labs or a meeting with one of our researchers - please get in touch today and we can talk through the possibilities.

Thank you for considering leaving a gift in your Will to Warwick

### Contact us today

▷ 024 7657 4037

▷ [Benefactors@warwick.ac.uk](mailto:Benefactors@warwick.ac.uk)

[www.warwick.ac.uk/legacies](http://www.warwick.ac.uk/legacies)



# In 10 years' time, 1 million people in the UK will have dementia

---

Our researchers at Warwick are finding new ways to detect dementias like Alzheimer's early on, and ways to reverse the damage.

We think we're really close to a big breakthrough with our investigations.

---

***Every 4 seconds, another person is diagnosed. Can you help us find earlier ways to diagnose and treat dementia?***

**WARWICK**  
THE UNIVERSITY OF WARWICK

Did you know?

*100% of every gift goes straight to your chosen cause without administration fees.*

*As an exempt charity, leaving us a gift could save money on your inheritance tax bill too.*



**Dr Joanna Collingwood**  
Associate Professor, School of Engineering



"We're working towards a timely way of diagnosing degenerative disorders, and ways to facilitate therapy for these diseases. The way we're doing that is by looking at the ways metals change in brain disease, and we're making real progress."



**Did you know?**



- Combined government and charity investment in dementia research is seven times lower than cancer research.
- There are 850,000 people living with dementia in the UK today. By 2025 it will be over 1 million.

## Dementia research at Warwick

Finding the causes and how to reverse the damage

### What if we could predict, stop or reverse the damage of dementias like Alzheimer's?

Right now, one in six people over the age of 80 have dementia, and our population is ageing rapidly. The most common form is Alzheimer's disease, and sadly there isn't a cure for it yet.

In 10 years' time, at least 1 million people in the UK will have dementia. If you've ever had a friend or family member affected by it, you'll know how devastating it can be.

Symptoms include memory loss, mood changes and problems with communicating and reasoning - and it can feel like the person you know is slowly drifting away.

Your donations help our experts to work on ways to diagnose and treat dementias like Alzheimer's. Professor Joanna Collingwood is one of our experts researching the impact of trace metals like iron in the brain which in turn will help to detect dementia diseases as early as possible.

If you are thinking about donating to health research like Alzheimer's, we might be able to arrange a visit to our labs or a meeting with one of our researchers. Get in touch today and we can talk through the possibilities.

**Thank you for considering leaving a gift in your Will to Warwick**

**Contact us today**  
▷ 024 7657 4037

[www.warwick.ac.uk/legacies](http://www.warwick.ac.uk/legacies)



## If you can read this sentence, you're at an advantage

If you're a young person in Africa, you're more likely to be illiterate and have reduced life-chances as a consequence. Warwick in Africa is working to change this in the very poorest schools.

We're transforming the way that vital subjects like Maths and English are taught, and introducing new teaching methods to inspire lasting change in the classroom.

**Could you leave a gift in your Will to help spread equality through education?**

**WARWICK**  
THE UNIVERSITY OF WARWICK

Did you know?

*100% of every gift goes straight to your chosen cause without administration fees.*

*As an exempt charity, leaving us a gift could save money on your inheritance tax bill too.*



### Justice Tshithavhana Learner taught by Warwick volunteers



“Daniel was friendly and patient and very different to our usual teachers. I’m now able to understand things like punctuation, direct speech and adverbs that had confused me since primary school.”



### Joe Seiboth Volunteer Teacher, Limpopo



“At its core, Warwick in Africa is about a group of young people wanting to use the skills they have to help another group of young people; and in this it’s able to overcome race, language and distance, and both groups end up learning a lot.”

## Warwick in Africa

### Giving equal opportunities and access to education

#### We’re fighting poverty with education

Ten years ago, a few students set out on a small volunteering project teaching English and Maths in six African schools. Today we run a multi-layered programme helping learners and their teachers in South Africa, Tanzania and Ghana.

We believe that enhancing education in Africa is a powerful way to address poverty.

Our volunteers teach essential English and Maths skills to learners, and Master Classes to their teachers.

We have now reached over 280,000 learners in 10 years, and have trained over 1,400 teachers.

Volunteering has a profound effect for those who take part too. Volunteers consistently report that their resilience, teaching, communication, leadership and team building skills have grown.

Many of them also find their vocation: after Warwick in Africa, 49% train to become teachers.

#### Could you support projects like Warwick in Africa with a gift in your Will to Warwick?

#### Contact us today

- ▷ 024 7657 4037
- ▷ [Benefactors@warwick.ac.uk](mailto:Benefactors@warwick.ac.uk)





## Our scholars can change lives. Can you change theirs?

Look around you: the doctors you see in hospitals, the engineers you hear about tackling cancer, the designers who create your cars, and the teachers who inspire the next generation.

There's a likelihood they were once students, and with over 193,000 graduates, there's every chance some studied at Warwick.

***We urgently need the brightest graduates in society, but increasing fees are holding people back. Could you help?***

**WARWICK**  
THE UNIVERSITY OF WARWICK

Did you know?

*100% of every gift goes straight to your chosen cause without administration fees.*

*As an exempt charity, leaving us a gift could save money on your inheritance tax bill too.*



**Sam Martin**  
2nd year Chemistry Student



"I am honoured to be supported in this way. It's given me peace of mind financially, and a confidence boost. Just because I come from a deprived area doesn't mean I'm not good enough."



**Yasmin Asantewaa**  
3rd year German and Business Student



"It's an amazing feeling that someone believes in me enough to fund a scholarship to help me reach my full potential. It's hard to imagine my University experience without it."

## Change a life with a scholarship

**Benefactors' is our flagship scholarship programme, helping gifted and talented undergraduates from disadvantaged backgrounds**

**Your scholarship could give someone three special things:**

1. **Increased confidence** with special academic, careers and pastoral support
2. **Better chances** with unique work experience, mentoring opportunities and internships
3. **Financial aid** with bursaries to help living costs and access to essential educational resources

By supporting the programme you'll be helping someone complete and excel in their degree, secure an internship, visit a museum, find a job, start a business, discover a cure.

That's what we call life-changing.

**How do we identify scholars?**

We run outreach projects to help identify gifted scholars and prepare them for success in Higher Education. We work across challenging schools, where aspirations are low and access to university is limited.

Typically our scholars come from backgrounds with a household income of under £25k. Many are the first in their families to come to University.

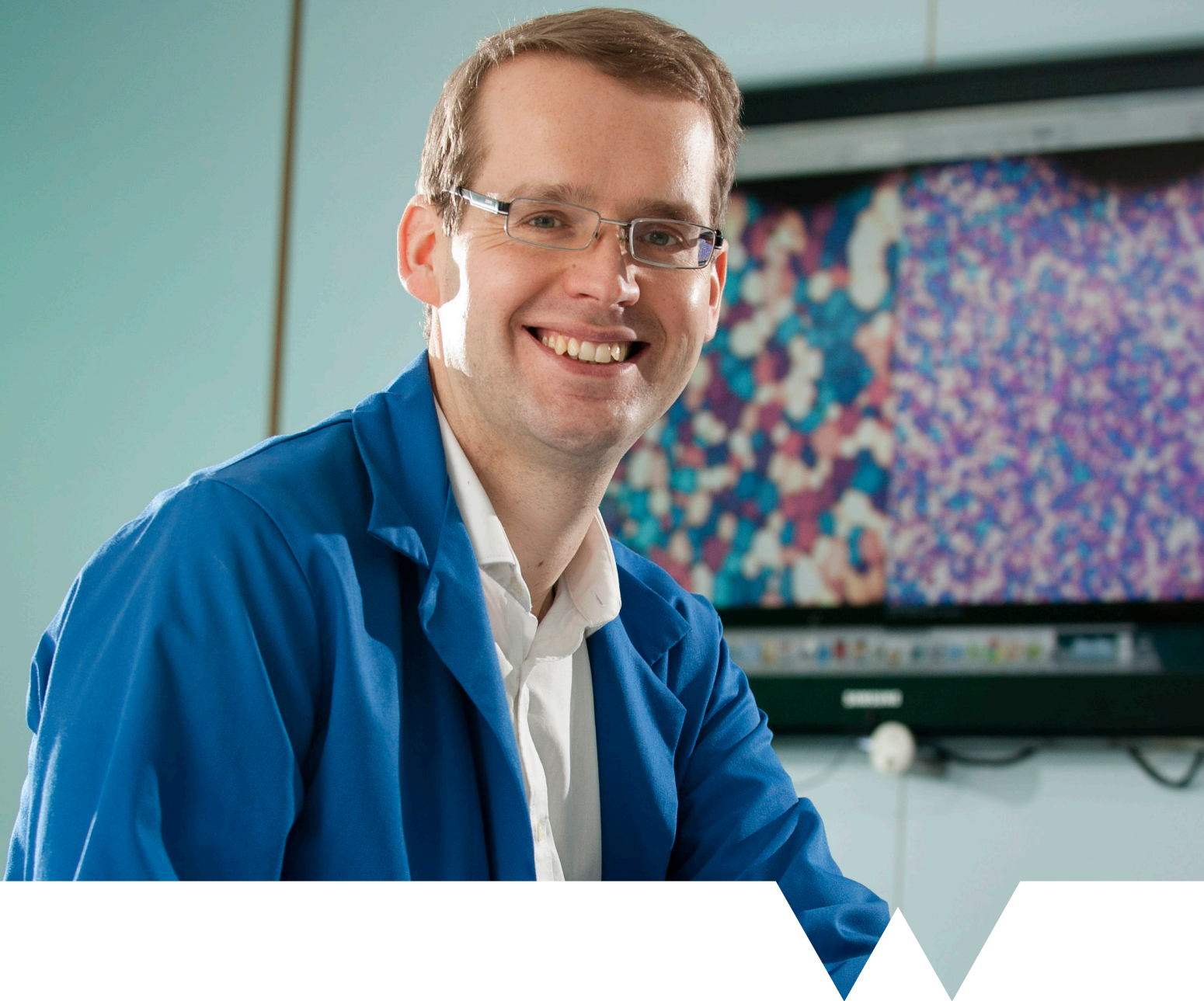
**Could you consider leaving a gift in your Will to change their lives?**

**Contact us today**

▷ **024 7657 4037**

▷ **Benefactors@warwick.ac.uk**

**[www.warwick.ac.uk/legacies](http://www.warwick.ac.uk/legacies)**



## Our advice on leaving a gift in your Will

We know that it's an incredibly personal (and generous) thing to do, but it always helps us to know what you're planning so we can understand your wishes and work together to shape your gift accordingly.

The next few pages offer you some advice on wording which may be useful.

***We strongly advise all of our legacy donors to consult with their solicitor and family members before coming to a decision.***

**WARWICK**  
THE UNIVERSITY OF WARWICK

A legacy story at Warwick

*Dr Matt Gibson (pictured above) was an early career researcher given funding through Noreen Murray's legacy donation.*

*He's now found a way to freeze and store blood for medical purposes which will completely revolutionise medical treatment.*

---

## Leaving a *flexible* donation

Some people leave donations which can be used in any way by the University. These help us respond quickly and flexibly to new situations.

We don't know what the equivalent version of Ebola will be in fifty years' time, but your gift might be the one that helps us cure it.



---

## Leaving a *particular* donation

What matters most to you? Did Warwick set you on your career path – or perhaps you've benefited from research into medical issues and cures? Do you want to help tomorrow's students? We'd be happy to chat with you so that we can make sure that your gift achieves your goals.

- **Supporting students**  
Helping intelligent young people to go forward in life, no matter what their financial background is.
- **Improving lives with research**  
Helping academics redefine their fields from medicine to literature.
- **Changing campus**  
Providing a better environment for teaching and learning at Warwick.
- **Supporting the Endowment Fund**  
Endowment funds are crucial for any university's success. We could use the interest on your gift for many years to come, helping us to become more independent and compete with peer institutions in the UK and internationally.

**Remember:** If you'd like to include a gift in your Will for a special project, then we will always make every effort to respect these wishes. However, very occasionally, situations can change and the original purpose of the legacy may become unfeasible.

Because of this, we would encourage you to allow the University to be able to implement your gift in a similar field on campus instead, or just make your gift to the area of greatest need.

---

***You must talk to your solicitor to make your wishes clear and in all cases, we strongly recommend seeking professional legal advice when drawing up your Will.***

# Suggested wording

## 1. Pecuniary

This is a simple legacy of a specified sum of money to a named beneficiary.

To preserve the real value of your gift, you might want to make the gift index-linked, which prevents the value being eroded by inflation.

*We suggest the following wording:*

### General Purposes Legacy

"I give free of tax to The University of Warwick, Coventry, CV4 8UW the sum of £ [in figures and words] for its general purposes. I direct that the receipt of the Registrar or other duly authorised officer shall be a sufficient discharge to my Executors."

### Specific Purposes Legacy

"I give free of tax to The University of Warwick, Coventry, CV4 8UW the sum of £ [in figures and words] and I express the wish (but without imposing a binding legal obligation to do so) that the University shall use the bequest for the benefit of [gift direction]. I direct that the receipt of the Registrar or other duly authorised officer shall be a sufficient discharge to my Executors."

## 2. Residuary

The residue of your estate is the value remaining after all legacies, debts, and other charges have been met. The advantage of a residuary legacy is that its value will not be eroded by inflation.

*We suggest the following wording:*

### General Purposes Legacy

"I give ["all" or specify % proportion] of the residue of my estate (out of which shall be paid my funeral and testamentary expenses and my debts) and any property over which I have at my death any general power of appointment to The University of Warwick, Coventry, CV4 8UW absolutely, for its general purposes. I direct that the receipt of the Registrar or other duly authorised officer shall be a sufficient discharge to my Executors."

### Specific Purposes Legacy

"I give ["all" or specify % proportion] of the residue of my estate (out of which shall be paid my funeral and testamentary expenses and my debts) and any property over which I have at my death any general power of appointment to The University of Warwick, Coventry, CV4 8UW absolutely, and I express the wish (but without imposing a binding legal obligation to do so) that the University shall use the bequest for the benefit of [gift direction]. I direct that the receipt of the Registrar or other duly authorised officer shall be a sufficient discharge to my Executors."

### 3. Reversionary

A reversionary legacy is an excellent way of providing for family or friends and benefiting the University too. It involves leaving assets to a chosen beneficiary to use during their lifetime, with the whole or a portion reverting to Warwick on their death.

### 4. Non-money Gifts

Is there another kind of gift which you'd like to give to the University?

Legacies are not necessarily in the form of money – you could bequeath a gift in the form of stocks and shares, works of art and other valuables.

Of course, if you are leaving a gift like this, you should think about who will bear the expense of transporting the item(s) to the University.

Suggested wording for non-money gifts:

"I give free of tax to The University of Warwick, Coventry, CV4 8UW my [full description of item and location] for its general purposes. I direct that the receipt of the Registrar or other duly authorised officer shall be a sufficient discharge to my Executors."

### 5. Conditional

A conditional legacy addresses the possibility that you may survive all your named dependants. It would ensure that, in this event, your estate would be left to the University and to any other beneficiaries you name.

### 6. How to update an existing Will

You can make simple alterations to your Will through a supplement known as a *Codicil*.

A Codicil confirms your original Will but also adds to it, and it's important to consult your solicitor about whether your Codicil is appropriate, or if you need to redraft your Will in full.

# Thank you

## To all our legacy donors

