

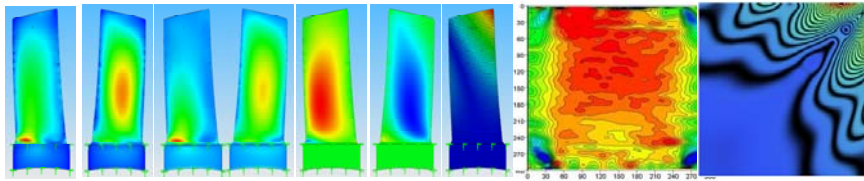
Form-finding. Concepts and Visualisation

by

Dr. Wanda Lewis

21 November 2007, 4 pm,

Room A401, School of Engineering, Library Road,
University of Warwick



The question of FORM is fundamental to the work of an architect or an artist, but is it also relevant to an engineer? The process of finding the form, or 'form-finding', will be discussed from an engineering perspective, and in relation to the principle of minimality that operates in Nature. Stress calculations accompanying the form-finding process are not only valuable to engineers; colour images of deformations can be viewed as digital 'art' in their own right, or even used as didactic aids for art conservators. The significance of form in the design of any object will be illustrated using examples drawn from architecture, engineering, art, and biology.



Designing for the 21st Century