

Showcasing Africa-related research,
teaching, collaboration and culture
at the University of Warwick



SHOWCASE
COLLABORATION GOVERNANCE HEALTH CLINICAL
FOOD PSYCHOLOGY
TEACHING RESEARCH
YOUTH AFRICA CHILDREN
GLOBALISATION
ENGINEERING
@WARWICK
BIOLOGICAL SCIENCES
NETWORKS IMPACT ENVIRONMENT
FILM CLIMATE CHANGE POPULATION
HISTORY SECURITY MUSIC LEARNING LITERATURE
CHANGE

Friday 15 & Saturday 16
January 2010

Wolfson Research Exchange
and Millburn House
University of Warwick

go.warwick.ac.uk/africashowcase

THE UNIVERSITY OF
WARWICK



Welcome

The University of Warwick, in particular its Sub-Saharan African Research Network (SSARN) and Institute of Advanced Study (IAS), would like to extend a warm welcome to all those attending this event. Africa@Warwick is intended to showcase research themes and teaching programmes connecting Warwick to Africa, and over the next two days we invite you to engage with a diverse programme, featuring a sample of African-based research involving members of SSARN and colleagues located at Warwick's Strategic Partner institutions across the globe, as well as presentations highlighting funding opportunities and a range of teaching initiatives. On Friday evening a series of stimulating cultural activities will be on offer – film, music, readings and an exhibition of photographs. The showcase event is intended to highlight current activities, to stimulate debate, to build networks and future collaborations, and to seed new innovative ideas for developing research and teaching relating to Africa. We hope that you will have a productive and enjoyable visit to the Warwick campus and showcase event.

Professor Hilary Marland
IAS Director

Friday 15 January 2010

Wolfson Research Exchange, University of Warwick Library

- 9 – 10am **Coffee and registration**
- 10am **Welcome** from *Professor Nigel Thrift* (Vice-Chancellor of the University of Warwick) and *Professor Hilary Marland* (Director of the Institute of Advanced Study)
- 10.15 – 11.15am **What Warwick does in Africa**
Non-research elements and Warwick's strategy – including:
- Presentation by *Mary McGrath* (Director of Major Gifts, Development and Alumni Relations Office) and *Ken Sloan* (Deputy Registrar) on Warwick in Africa (including the International Gateway for Gifted Youth and various teaching schemes)
 - Law (Ethiopia MA and PhD training)
- 11.15 – 11.30am **Break**
- 11.30am – 12noon **What Warwick does in Africa** (research elements):
- Presentations on externally funded projects, eg *DelPHE*, *CARTA* (*Consortium for Advanced Research Training in Africa*), *DFID*.
- 12 – 1pm **Funders' perspective on resources for Africa**
- Presentations by funding bodies and charities (including *DFID*, *British Council*, *Research Councils*, and *the Wellcome Trust*) – on funding priorities, applications, schemes.
- 1 – 2pm **Lunch**



2 – 4.30pm

Session One 'Youth and Children'

- Keynote speaker *Sam Kauffmann* (Film maker, Boston University) **Why Not Ask the Kids? HIV-Positive Ugandan Children Discuss their Lives**
- *Phil Mizen* (Sociology) **Friendship, Co-operation and Reciprocity Among Accra's Poor Children**
- Discussion
- Break
- Keynote speaker *Alex Ezeh* (African Population and Health Research Center) **A Generation at Risk: Prioritising Child and Youth Health Concerns**
- *Kandala Ngianga-Bakwin* (Warwick Medical School) **Geographical and Temporal Variation in Health and Disease among Children in Sub-Saharan African Countries**
- Warwick in Africa / IGGY / Development and Alumni Relations Office (presentations by students)
- Discussion

4.30pm

Coffee

Millburn House, University of Warwick Science Park

6 – 8pm

Cultural evening

Foyer

General reception

- Buffet and wine
- Music by Ugandan music group *'Ngoma and Embaire strikes back'*

IAS

Display of photos 'Ghana's 'new' urban childhoods'

(*Phil Mizen's* Visual Sociology project working with Street Children in Ghana)

6.30pm

Screening of film by *Sam Kauffmann*

Film and TV

'Living with Slim' (30 mins) plus discussion.
www.samkauffmann.com/films/slim

7.15 – 8pm

Readings of Francophone and Anglophone African Literature in the Writers' Room

CAPITAL Centre

by *Neil Lazarus*, *Sorcha Gunne* and *Pierre-Philippe Fraiture*



Saturday 16 January 2010



Wolfson Research Exchange, University of Warwick Library

9.30 – 10am

Coffee

10am – 12.30pm

Session Two 'Governance'

- Keynote speaker *Susie Foster* (Boston University)
After AIDS – the Lasting Impact of the HIV Epidemic on African Societies
- *Dan Branch* (History)
Corruption and the Diffusion of Power: the Origins of Kenya's Crisis of Governance
- *Renske Doorenspleet* (PAIS) **How People View Democracy in African Democracies**
- Discussion
- Break
- *Helen Liebling-Kalfani* (Clinical Psychology), and *Bruce Baker* (Director of African Studies Centre, Coventry University)
The Governance of Sexual Violence in Northern Uganda
- *Franklyn Lisk* (Centre for the Study of Globalisation and Regionalisation)
A New Challenge in Global Environmental Governance: Adaptation to the Effects of Climate Change on Sustainable Human Development in Sub-Saharan Africa
- Discussion

12.30 – 2pm

Lunch

2 – 4.50pm

Session Three 'Food and the Environment'

- Keynote speaker *James McCann* (Boston University)
Food Security's Unintended Consequences: the Agro-ecology of Malaria and Maize
- *Mebrahtu Ateweberhan* (Biological Sciences)
Climate Change Impacts on Coral Reefs: Implications for Regional Food Security in East Africa
- Discussion
- Break
- Keynote speaker *Lenore Manderson* (Monash University) **Societal and Cultural Impacts of Environmental Change, Sustainability and Security**
- *Gillian Hundt* (School of Health and Social Studies)
Resilience and Multiple Livelihood Strategies for Food Security in Agincourt, Rural South Africa
- *Franco Cappuccio* (Warwick Medical School)
Chronic Disease Prevention in SSA: a Case Study of Community Base Intervention in Ashanti
- Discussion

4.30 – 4.45pm

Final words

4.45pm

Coffee

5pm

Finish

Speakers



Mebrahtu Ateweberhan
*Biological Sciences,
University of Warwick*
Climate Change Impacts on
Coral Reefs: Implications
for Regional Food Security
in East Africa

Dan Branch
*History,
University of Warwick*
Corruption and the
Diffusion of Power: the
Origins of Kenya's Crisis of
Governance

Franco Cappuccio
Warwick Medical School
Chronic Disease Prevention
in SSA: a Case Study of
Community Base
Intervention in Ashanti

Renske Doorenspleet
*PAIS,
University of Warwick*
How People View
Democracy in African
Democracies

Alex Ezeh
*African Population and
Health Research Center*
A Generation at Risk:
Prioritising Child and
Youth Health Concerns

Susie Foster
Boston University
After AIDS – the Lasting
Impact of the HIV Epidemic
on African Societies

Gillian Hundt
*School of Health and
Social Studies,
University of Warwick*
Resilience and Multiple
Livelihood Strategies for
Food Security in Agincourt,
Rural South Africa

Sam Kauffmann
*Film maker,
Boston University*
Why Not Ask the Kids?
HIV-Positive Ugandan
Children Discuss their Lives

Helen Liebling-Kalfani
*Clinical Psychology, Warwick
and Coventry Universities
and
Bruce Baker*
*Director of African Studies
Centre, Coventry University*
The Governance of Sexual
Violence in Northern Uganda

Franklyn Lisk
*Centre for the Study
of Globalisation and
Regionalisation,
University of Warwick*
A New Challenge in Global
Environmental Governance:
Adaptation to the Effects
of Climate Change on
Sustainable Human
Development in
Sub-Saharan Africa

Lenore Manderson
Monash University
Societal and Cultural
Impacts of Environmental
Change, Sustainability
and Security

James McCann
Boston University
Food Security's
Unintended Consequences:
the Agro-ecology of Malaria
and Maize

Phil Mizen
*Sociology,
University of Warwick*
Friendship, Co-operation
and Reciprocity Among
Accra's Poor Children

Kandala Ngianga-Bakwin
Warwick Medical School
Geographical and
Temporal Variation in
Health and Disease Among
Children in Sub-Saharan
African Countries

Africa @ Warwick

Warwick Institute of Advanced Study

The Warwick Institute of Advanced Study (IAS), established in 2007, is dedicated to enriching the University's research environment and forms an integral part of the University Strategy Vision 2015. The main goals of the IAS are to enhance opportunities for international engagement with Warwick, emphasising links with the University's strategic partners; to promote research and interdisciplinary collaborations across all Warwick faculties; to enrich the research environment for postgraduate students and early career scholars; to develop the University's impact agenda, and to increase public engagement with Warwick research nationally and internationally. The IAS supports a cluster of funding initiatives which are directed towards achieving these goals.

The IAS is based in Millburn House at the University of Warwick where there are individual offices for visiting fellows, a seminar room for up to 35 people and hot-desking for Early Career Fellows. IAS also offers residential accommodation to senior researchers who are working with Warwick staff on collaborative projects at Cryfield Grange, a restored Grade II building set in the Warwickshire countryside close to the campus. Many IAS activities take place at the Library's Wolfson Research Exchange, as well as Warwick's Venice research facility, the Palazzo Pesaro-Papafava.

go.warwick.ac.uk/ias

Sub-Saharan African Research Network

Made up of more than 100 faculty and students from across Warwick and Coventry Universities, the SSARN brings together Warwick researchers working in and on Africa. The network organises regular seminars and other such events, while also providing a framework for discussions of collaborative and inter-disciplinary research projects.

www2.warwick.ac.uk/fac/cross_fac/ias/networks/ssarn



Warwick in Africa

Warwick in Africa began as a small pilot project in which 12 Warwick students taught Maths in sub-urban and township schools in Johannesburg for three weeks. The students involved have either taken part in the Student Associates Scheme, a short course programme in teaching delivered by the Institute of Education, or are current PGCE students.

In just four years, a programme has developed through which this summer:

- 6,500 learners have been taught in South Africa or Tanzania for at least four weeks for £20 per learner
- 4 African teachers made a two-week visit to Warwick for a bespoke programme of continuing professional development
- 3 African learners came to IGGY U on campus
- 43 township learners have joined IGGY

All of the programme has been funded philanthropically by alumni, friends, Barclays Capital and other foundations.

Plans are already well underway to continue the support in South Africa and Tanzania, develop the IGGY membership and to run two new pilots in Ghana to support both children and their teachers.

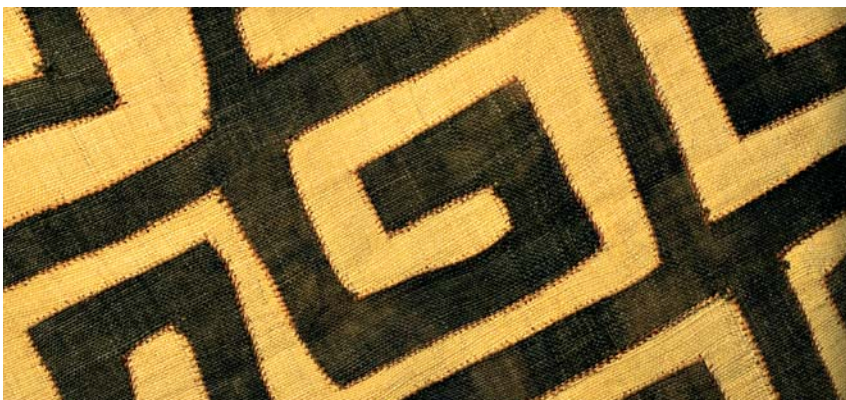
www2.warwick.ac.uk/alumni/giving/vision2015/responsibility/africa

International Gateway for Gifted Youth

IGGY is a new social and learning community for the world's brightest young people and was launched by the University in 2008. IGGY works with 11-19 year olds from across the globe, giving them access to inspiring and challenging programmes, both online and face-to-face. IGGY has been very active in Africa and we have been delighted to welcome students from the Warwick in Africa schools onto IGGY programmes. We also have a thriving community of IGGY students in the Johannesburg townships and run dedicated sessions for them. IGGY students and academics alike have been inspired by the unique perspective and contribution that these students have brought to the community.

In 2010 IGGY plans to expand its reach in Africa by extending the provision for our members, including running a two-week residential programme in Africa.

warwick.ac.uk/go/iggy



Outline Programme

Friday 15 January 2010

Wolfson Research Exchange, University of Warwick Library

- 9 – 10am **Coffee and registration**
- 10am **Welcome** from VC and IAS Director
- 10.15 – 11.15am **What Warwick does in Africa**
Non-research elements and Warwick's strategy
- 11.15 – 11.30am **Break**
- 11.30am – 12.00noon **What Warwick does in Africa** (research elements)
- 12.00noon – 1pm **Funders' perspective on resources for Africa**
- 1 – 2pm **Lunch**
- 2 – 4.30pm **Session One 'Youth and Children'**
- 4.30pm **Coffee**

Millburn House, University of Warwick Science Park

- 6 – 8pm **Cultural evening**
Celebrating African Culture: Reception, Food,
Music, Film Screening, Readings

Saturday 16 January 2010

Wolfson Research Exchange, University of Warwick Library

- 9.30 – 10am **Coffee**
- 10am – 12.30pm **Session Two 'Governance'**
- 12.30 – 2pm **Lunch**
- 2 – 4.30pm **Session Three 'Food and the Environment'**
- 4.30 – 4.45pm **Final words**
- 4.45pm **Coffee**
- 5pm **Finish**