



P R E S I D E N T I A L
V I S I T

1 4 D E C E M B E R 2 0 0 0

P R O G R A M M E F O R
T H E P R E S I D E N T I A L V I S I T

Music by the University of Warwick Chamber Choir,
conductor Colin Touchin

**Welcome from the Vice-Chancellor of the
University of Warwick, Sir Brian Follett**

Speech by the Prime Minister, the Rt Hon Tony Blair, MP

Speech by President William J Clinton

I N T R O D U C T I O N

16,869 students (8,995 undergraduates, 6,439 postgraduates)

Programmes in Humanities, Science, Medicine and Social Sciences, many with an interdisciplinary focus

Founded less than 40 years ago, Warwick has developed rapidly to become one of the UK's most highly respected universities. Currently ranked fourth among UK universities for the quality of its research, and with the excellence of its teaching confirmed in the National Teaching Quality Assessment, Warwick has consistently been placed in the Top Ten in the UK universities' league tables. It attracts high quality students on both its undergraduate and

postgraduate programmes. Its lively modern campus is home to some 16,000 students from over 100 different countries, some 40% of whom are postgraduates. With its Arts Centre, its Science Park, its new Medical School (in partnership with the University of Leicester) and its commitment to lifelong learning, it has successfully balanced its strong international and national reputation with local and community relevance.

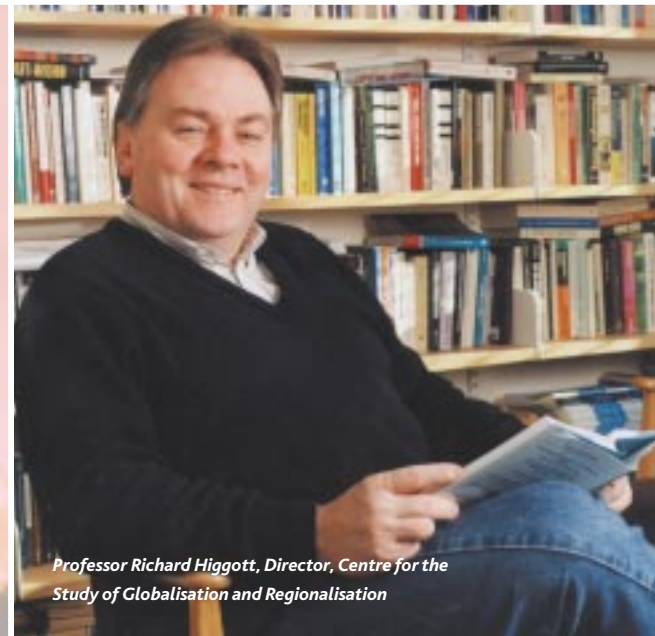
The University of Warwick is contemporary, energetic and forward looking, deeply committed to its students, its impressive research agenda, and the wider community at home and abroad.



G L O B A L I S A T I O N

The Centre for the Study of Globalisation and Regionalisation was established in 1997, with funding from the UK's Economic and Social Research Council. Its research focuses on the understanding and exploration of globalisation, its relationship to regionalisation, and the implications for modern governments from the evolution of globalising tendencies in the international economic and political

orders. It addresses the new opportunities, new insecurities and new inequalities for established, emerging and weaker nations created by global processes. The Centre has a strong international presence, providing a national and international site for scholars and practitioners, disseminating its work through conferences, workshops and publications.



*Professor Richard Higgott, Director, Centre for the
Study of Globalisation and Regionalisation*

R E L E V A N C E

From its earliest days, the University has sought to engage with real world issues. Its impact has been impressive.

Warwick Business School is the first in the UK to have gained formal accreditation from management associations in the USA, Europe and the UK. It has successfully combined research of international excellence (which last year produced external funding of over £3.7 million) with teaching which meets the needs of both undergraduates and practising managers – the Warwick MBA, widely supported by employers, offers four flexible study routes, enabling students to balance the demands of study, careers and families. Warwick Business School offers 17 degree programmes, attracting over 3,800 students from more than 70 countries.

Warwick Manufacturing Group, in the School of Engineering, collaborates with major companies across four continents. It has transformed the face of engineering management education and created a new relationship between academics and industrialists. It specialises in industrially relevant

Research and Development - leading edge technological research in collaboration with over 40 UK and international companies - while 4,000 people are currently involved in its engineering and business management programmes in the UK, the Pacific Rim and South Africa.

The **Warwick Institute of Education** is firmly focused on the issues that directly affect pupils, teachers and education managers. Its wide ranging education and research programme directly influences teaching and management policy through its professional development programmes for practising teachers and education managers. The

School of Law has made a distinctive contribution to legal education by focusing on the social context in which law and lawyers operate. Students are encouraged to examine the contribution of law to contemporary social and economic problems - an approach which is also reflected in the School's

highly rated research programme. The School has a strong international perspective, reflected in its academic programmes and in its exchange links with universities across the world.

This year, Warwick responded to the nation's need for more medical doctors by opening a new **Medical School**, in partnership with the University of Leicester, with an innovative fast-track graduate entry programme. Our first medical students - all graduates in Biological Sciences - began their training in September. The new Medical School will also directly benefit the people of Coventry and Warwickshire, by providing more doctors in the area and greater access to specialist services, and through the upgrading of Coventry's Walsgrave Hospital to a full University Teaching Hospital.



2,500 international students from
100 different countries

A N I N T E R N A T I O N A L S T U D E N T C O M M U N I T Y

Warwick is a cosmopolitan community with over 2,000 international students from more than 100 different countries. Immediately before the start of term, the University's International Office offers a four-day Orientation Programme for newly joining international students to help them settle in at Warwick. There is also a network of support services including specialist Student Advisers and International Liaison Staff: in fact, the Quality Assurance Agency recently singled out for praise Warwick's 'excellent student support and guidance' for international students. Warwick's alumni organisation is also international. Warwick Graduates' Association now has alumni groups in 20 countries across the world, including the USA, Hong Kong, Singapore and South America.

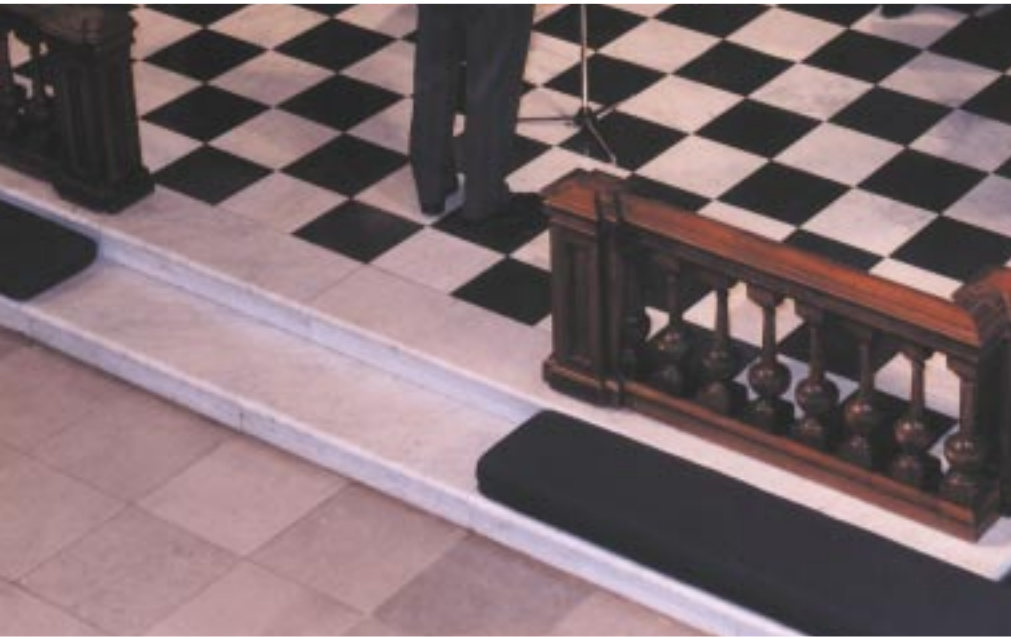
American Connections

From its earliest days the University was fortunate in developing a number of American partnerships.

Over the years, the Martin Family, whose branch in Connecticut acquired Smirnoff Vodka in 1939 and marketed it with great success after the Second World War, have donated £19 million to the University, one of the largest educational benefactions in Britain from a single source. Their first donation in the 1960s was for scholarships for a student exchange between Warwick and the USA, and since then the Martins' generosity has helped fund the Arts Centre (inspired by the Hopkins Center in Dartmouth), a student hall of residence for international students and several major capital projects and student scholarships.



The Chamber Choir performing in Birmingham Cathedral



S T U D E N T M U S I C

Student music flourishes at Warwick. There is a full Symphony Orchestra, 120 piece Wind Orchestra, Symphonic Wind Ensemble, Chorus of over 300 members, an international award-winning Chamber Choir and ensembles catering for all tastes and talents, from big band to chamber music, madrigals to musicals. Students regularly perform in the Arts Centre, as well as in other prestigious venues in the UK such as Symphony Hall, Birmingham. There are also regular European tours. The Chamber Choir, in particular, has a history of winning international competitions, going back to the Gold Award at the Montreux Choral Festival in 1988. The Choir has just reached the national semi-final of the Sainsbury's Choir of the Year 2000 Competition which will be broadcast in Britain on 26 December.

A remarkable record of high quality student music making - perhaps all the more remarkable because Warwick has never offered an academic music

degree. All our student musicians study in other disciplines - they are scientists, mathematicians, social scientists, historians, lawyers or linguists - yet in Warwick's Music Centre they are able simultaneously to develop their musical talents.

The Director of Music, Colin Touchin, and Assistant Director, Stuart Dunlop, are supported by a staff of thirty tutors and further professional training is provided by the University's Quartet in Residence, the Coull Quartet - a professional ensemble with an international reputation.

Student music has always been central to the life of the University. From its earliest days, Warwick has had a Director of Music. A series of Music Scholarships, initially funded by the Trust set up by the Martin family, has enabled students to pursue their musical interests alongside their main academic studies. The Music Centre adds an extra dimension to campus life - for example, our annual Degree

Congregations are enhanced by music specially composed by our Director of Music and performed by student musicians. Music Centre students have regularly gone on to study at conservatoire level and to make distinguished careers in music - perhaps the best testimony of all to the quality of music making at Warwick.

W I D E N I N G A C C E S S T O
A W A R W I C K E D U C A T I O N

Warwick is determined to provide a first class university education for everyone with the ability to benefit from it, regardless of economic or social circumstances. This year, the University introduced scholarships, funded by Warwick Graduates' Association, for students who would otherwise have had financial difficulties. Thanks to the generosity of Warwick graduates, 25 very bright young people (all with 3 grade As at A level) are now happily embarked on their degree programmes.

The University is also working with school pupils to encourage an interest in higher education.

This summer, as part of the Government's Millennium Summer School Scheme, the University held a summer school for 16-17 year olds from inner city schools to give them a taste of degree level learning and of campus life. Warwick has been selected to pioneer the Government's ground-breaking Foundation Degrees Scheme, providing new opportunities for access to higher education. Mature students are also a high priority for Warwick: Part-Time Degrees and the 2+2 degree programme offer routes to a Warwick degree for the over 21s.



WARWICK ARTS CENTRE

Right at the heart of the campus of the University of Warwick is Warwick Arts Centre. It is the UK's largest arts complex outside London. Its location is a living embodiment of the importance the University places on culture for students and, equally importantly, the people of the West Midlands region. Conceived in the late 1960s and opened in 1974, Warwick Arts Centre now provides an artistic programme of quality,

excellence and enormous range, from classical music concerts by some of the world's leading orchestras to arts project work in local neighbourhoods. 233,000 people visit Warwick Arts Centre each year and attend over 1,400 events including the best in theatre, dance, music, visual arts, film, literature and comedy.



THE UNIVERSITY OF WARWICK, COVENTRY CV4 7AL, UK
TEL: +44 (0)24 7652 3523 Website: www.warwick.ac.uk