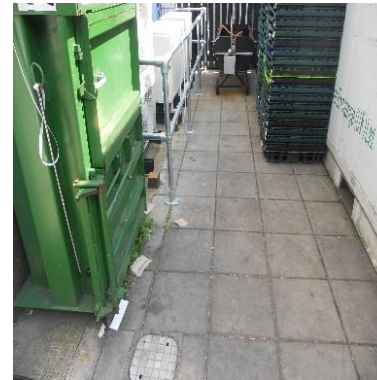


Instruction for safe use of cardboard balers

Safe use of cardboard balers

1. Ensure electrical switch is in 'off' position at supply box prior to carrying out visual checks of baler. Two rolls of baling tape should be in place on spools, located on the top of the baler and to the rear.

2. Ensure immediate area is free from obstacles and that there is adequate room for manoeuvre. Locate cardboard to be baled to side of baler.



Safe use of cardboard balers

WARWICK

3. Open 'upper' chamber door by lifting handle on left-hand side of baler.



4. Open bale chamber door by pulling lever towards yourself and releasing lower pedal with foot.



Safe use of cardboard balers

5. Check baling tape is located in 'feed' channels to back/base of chamber and tied to 'toggle' hooks. This enables effective binding of cardboard once compacted. Close lower chamber door.



6. Load cardboard in to bale chamber, close top loading door, ensuring that door handle is in 'locked' position.

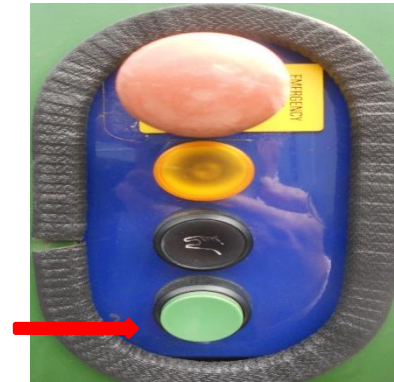


WARWICK

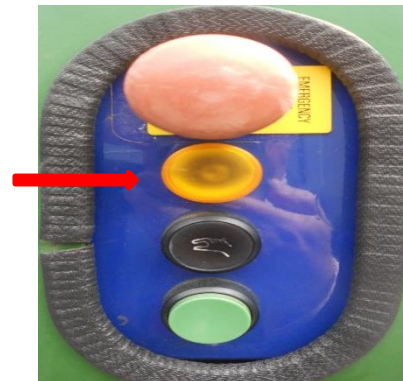
Safe use of cardboard balers

WARWICK

7. Turn electrical switch to 'on', start crush-cycle by pressing green button. Stand clear once in operation. On completion of crush-cycle compression head will automatically return to 'up' position.

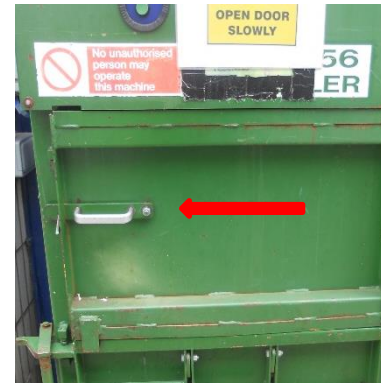


8. Repeat loading and crush-cycle processes until baler is full. **NB:** amber light on control panel will illuminate once baler is full.

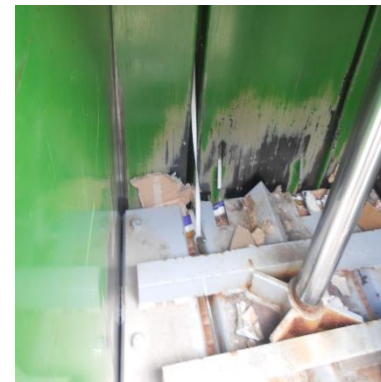


Safe use of cardboard balers

9. When baler is full open upper and lower chamber doors as per **Steps 2 & 3**. Take care that chamber doors do not swing back on to arms and/or legs.



10. Compression head should be in 'down' position. Insert 'strap-hook' through slots located on top of compression head and pull baling tape from rear of baler.



Safe use of cardboard balers

WARWICK

11. The straps should form loops which need to be pulled far enough forward to hang over the front of the compacted cardboard. Store 'strap-hook' to left hand side of baler.



12. Untie baling tape secured to front toggle hooks at front of base. Feed baling tape through loops as shown in Step 11 and tie-off securely.



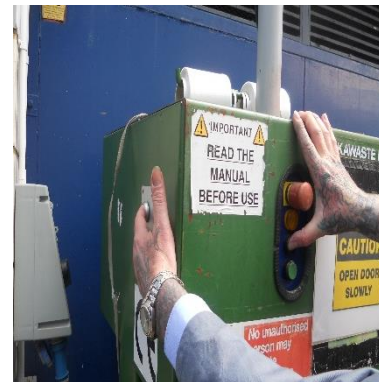
Safe use of cardboard balers

WARWICK

13. Using scissors cut through top strap of the loops so that cardboard is now detached from baling tape from rear of baler.



14. Stand clear of baler and press both 'manual' buttons on control panel/left-hand side of baler. This will reset compression head to 'upper' position. **NB:** keep clear of rising compression head.



Safe use of cardboard balers

15. Line up bale-truck, ensure the two prongs are guided in to slots under cardboard bale, back-plate of truck must make contact with bale. Tilt truck backwards, remove bale and store in designated area



16. Baling tape should be fed along 'feed-channels' to base of baler and ends tied to 'toggle' hooks at front of base. Place flat piece of cardboard on base as this will keep the baling tape in place.



Safe use of cardboard balers

WARWICK

17. Close and secure both 'upper' and 'lower' chamber doors.



18. Ensure the electrical switch on the supply box is turned to the 'off' position.

